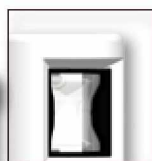




71299

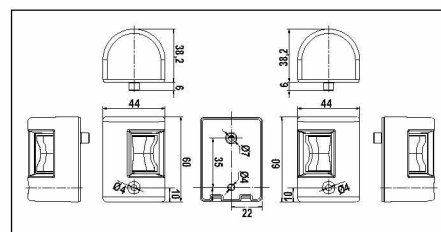


71300

Code	71299	71300
Housing	Black	White

FOS LED 12**Port & Starboard light side mount 112.5°**

- For vessels up to 12m
 - Visible distance: 1 nm
 - 12-15 V DC & 0.5W
 - Red & Green LED light
 - Vertical Mounted
 - Last for 50.000 hours
 - Waterproof, non-corrosive, non-magnetic
 - Included:
1. Screws DIN7981 / ISO 7049 M3.5x32mm
 2. Wire length 0.6m
 3. Double-side adhesive sticker that can be used as drilling drawing
- Weight: 65gr/pc



Dimensions are in mm



71301

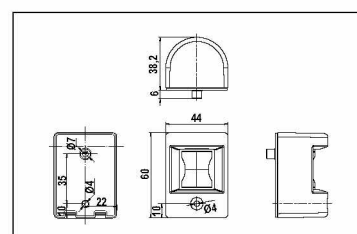


71302

Code	71301	71302
Housing	Black	White

FOS LED 12**Stern light side mount 135°**

- For vessels up to 12m
 - Visible distance: 2 nm
 - 12-15 V DC & 0.5W
 - White LED light
 - Vertical Mounted
 - Last for 50.000 hours
 - Waterproof, non-corrosive, non-magnetic
 - Included:
1. Screw DIN7981 / ISO 7049 M3.5x32mm
 2. Wire length 0.6m
 3. Double-side adhesive sticker that can be used as drilling drawing
- Weight: 65gr/pc



Dimensions are in mm



71303

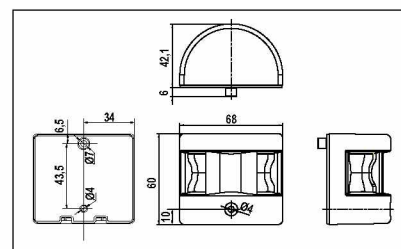


71304

Code	71303	71304
Housing	Black	White

FOS LED 12**Masthead light 225°**

- For vessels up to 12m
 - Visible distance: 2 nm
 - 12-15 V DC & 1W
 - White LED light
 - Vertical Mounted
 - Last for 50.000 hours
 - Waterproof, non-corrosive, non-magnetic
 - Included:
1. Screw DIN7981 / ISO 7049 M3.5x32mm
 2. Wire length 0.6m
 3. Double-side adhesive sticker that can be used as drilling drawing
- Weight: 150gr/pc



Dimensions are in mm



71305

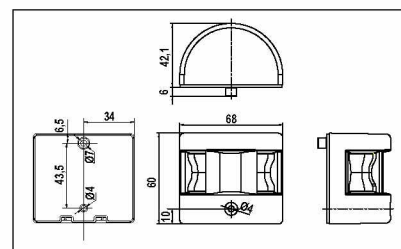


71306

Code	71305	71306
Housing	Black	White

FOS LED 12**Bi-color light side mount**

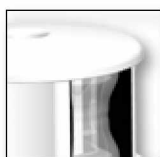
- For vessels up to 12m
 - Visible distance: 1 nm
 - 12-15 V DC & 1W
 - Red & Green LED light
 - Vertical Mounted
 - Last for 50.000 hours
 - Waterproof, non-corrosive, non-magnetic
 - Included:
1. Screw DIN7981 / ISO 7049 M3.5x32mm
 2. Wire length 0.6m
 3. Double-side adhesive sticker that can be used as drilling drawing
- Weight: 150gr/pc



Dimensions are in mm



71307

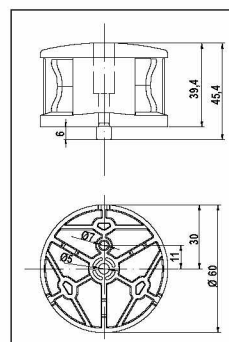


71308

Code	71307	71308
Housing	Black	White

FOS LED 12 All-Round light 360°

- For vessels up to 12m
- Visible distance: 2 nm
- 12-15 V DC & 1,5W
- White LED light
- Deck Mounted
- Last for 50.000 hours
- Waterproof, non-corrosive, non-magnetic
- Included:
 1. Screw DIN7981 / ISO 7049 M3.5x32mm
 2. Wire length 0.6m
 3. Double-side adhesive sticker that can be used as drilling drawing
- Weight: 95gr/pc



Dimensions are in mm



71309

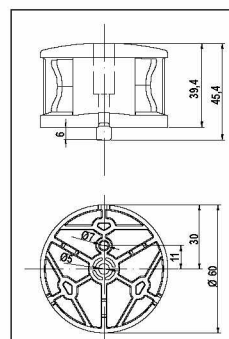


71310

Code	71309	71310
Housing	Black	White

FOS LED 12 Tricolor light

- For vessels up to 12m
- Visible distance: 2 nm
- 12-15 V DC & 1,5W
- Red, Green & White LED light
- Deck Mounted
- Last for 50.000 hours
- Waterproof, non-corrosive, non-magnetic
- Included:
 1. Screw DIN7981 / ISO 7049 M3.5x32mm
 2. Wire length 0.6m
 3. Double-side adhesive sticker that can be used as drilling drawing
- Weight: 95gr/pc



Dimensions are in mm



71311

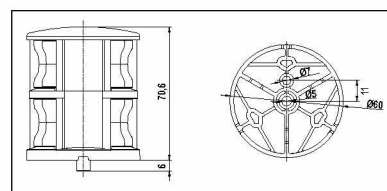


71312

Code	71311	71312
Housing	Black	White

FOS LED 12 Tricolor & Anchor light

- For vessels up to 12m
- Visible distance: 2 nm
- 12-15 V DC & 3W
- Red, Green & White LED light
- Deck Mounted
- Last for 50.000 hours
- Waterproof, non-corrosive, non-magnetic
- Included:
 1. Screw DIN7981 / ISO 7049 M4,8x60mm
 2. Wire length 0.6m, 3. Double-side adhesive sticker that can be used as drilling drawing
- Weight: 160gr/pc



Dimensions are in mm



71313

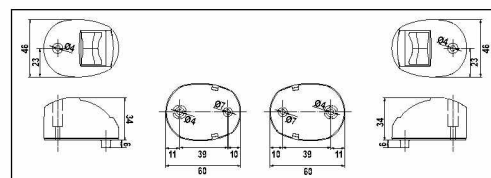


71314

Code	71313	71314
Housing	Black	White

FOS LED 12 Port & Starboard lights 112.5°

- For vessels up to 12m
- Visible distance: 1 nm
- 12-15 V DC & 0.5W
- Red & Green LED light
- Side Mounted
- Last for 50.000 hours
- Waterproof, non-corrosive, non-magnetic
- Included:
 1. Screws DIN7981 / ISO 7049 M3.5x32mm
 2. Wire length 0.6m
 3. Double-side adhesive sticker that can be used as drilling drawing
- Weight: 60gr/pc



Dimensions are in mm



71316



71315

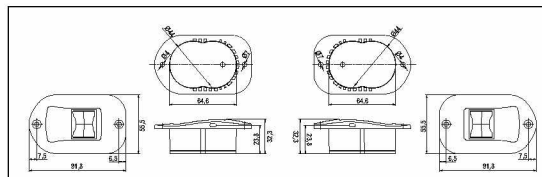


Code	71315	71316
Housing	Black	White

FOS LED 12

Port & Starboard lights side recessed mount 112.5°

- For vessels up to 12m
- Visible distance: 1 nm
- 12-15 V DC & 0.5W
- Red & Green LED light
- Side Recessed Mounted
- Last for 50.000 hours
- Waterproof, non-corrosive, non-magnetic
- Included:
 1. Screws DIN7981 / ISO 7049 M3.5x13mm
 2. Wire length 0.6m
 3. Double-side adhesive sticker that can be used as drilling drawing
- Weight: 75gr/pc



Dimensions are in mm



71318



71317

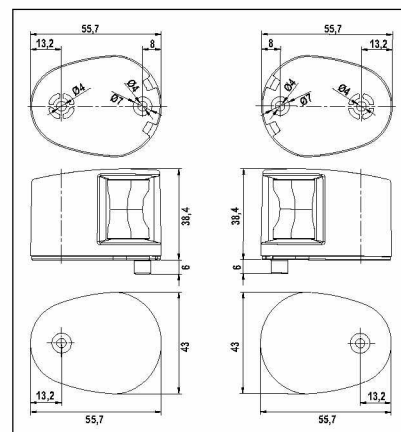


Code	71317	71318
Housing	Black	White

FOS LED 12

Port & Starboard lights deck mount 112.5°

- For vessels up to 12m
- Visible distance: 1 nm
- 12-15 V DC & 0.5W
- Red & Green LED light
- Deck Mounted
- Last for 50.000 hours
- Waterproof, non-corrosive, non-magnetic
- Included:
 1. Screws DIN7981 / ISO 7049 M3.5x32mm
 2. Wire length 0.6m
 3. Double-side adhesive sticker that can be used as drilling drawing
- Weight: 60gr/pc



Dimensions are in mm



71319



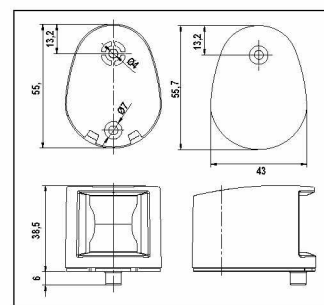
71320

Code	71319	71320
Housing	Black	White

FOS LED 12

Stern light deck mount 135°

- For vessels up to 12m
- Visible distance: 2 nm
- 12-15 V DC & 0.5W
- White LED light
- Deck Mounted
- Last for 50.000 hours
- Waterproof, non-corrosive, non-magnetic
- Included:
 1. Screw DIN7981 / ISO 7049 M3.5x32mm
 2. Wire length 0.6m
 3. Double-side adhesive sticker that can be used as drilling drawing
- Weight: 55gr/pc



Dimensions are in mm



71321



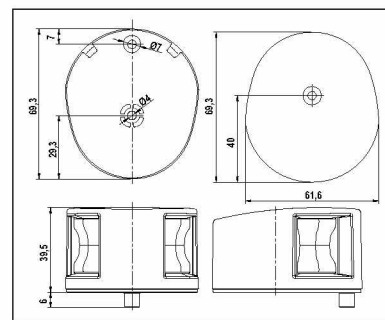
71322

Code	71321	71322
Housing	Black	White

FOS LED 12

Bi-color light deck mount

- For vessels up to 12m
- Visible distance: 1 nm
- 12-15 V DC & 1W
- Red & Green LED light
- Deck Mounted
- Last for 50.000 hours
- Waterproof, non-corrosive, non-magnetic
- Included:
 1. Screw DIN7981 / ISO 7049 M3.5x32mm
 2. Wire length 0.6m
 3. Double-side adhesive sticker that can be used as drilling drawing
- Weight: 90gr/pc



Dimensions are in mm

NEW



71968

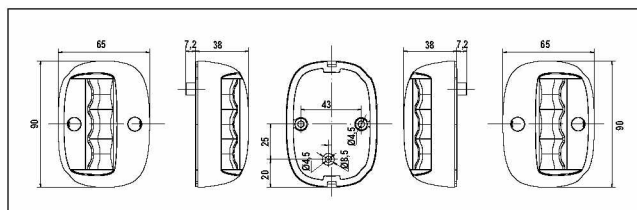


71969

Code	71968	71969
Housing	Black	White

FOS LED 20**Set Port & Starboard sidelights 112.5°**

- For vessels between 12-20m
- 12-24 V DC & 1.5 W
- Vertical Mounted
- Waterproof, non-corrosive, non-magnetic
- Included:
 1. Screw DIN7981 / ISO 7049 M4.2x32mm (2 pieces per item, total 4 pieces),
 2. 1.2m length of wire per product,
 3. double-side adhesive sticker that can be used as drilling drawing
- Weight: 155gr/pc



Dimensions are in mm

NEW



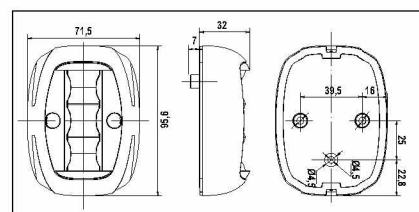
71970



71971

FOS LED 20**Stern light side mount, 135°**

- For vessels between 12-20m
- Visible distance: 2 nm
- 12-24 V DC & 1.5 W
- White LED light
- Vertical Mounted
- Last for 50.000 hours
- Waterproof, non-corrosive, non-magnetic
- Included:
 1. Screw DIN7981 / ISO 7049 M4.2x32mm (2 pieces per item),
 2. 1.2m length of wire per product,
 3. double-side adhesive sticker that can be used as drilling drawing
- Weight: 165gr/pc



Dimensions are in mm

Code	71970	71971
Housing	Black	White

NEW



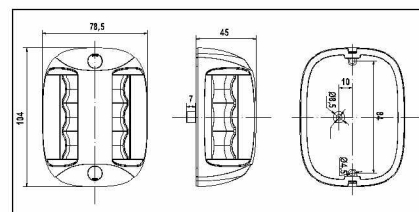
71972



71973

FOS LED 20**Masthead light 225°**

- For vessels between 12-20m
- Visible distance: 2 nm
- 12-24 V DC & 3W
- White LED light
- Vertical Mounted
- Last for 50.000 hours
- Waterproof, non-corrosive, non-magnetic
- Included:
 1. Screw DIN7981 / ISO 7049 M4.2x32mm (2 pieces per item),
 2. 1.2m length of wire per product,
 3. double-side adhesive sticker that can be used as drilling drawing
- Weight: 235gr/pc



Dimensions are in mm

Code	71972	71973
Housing	Black	White

NEW



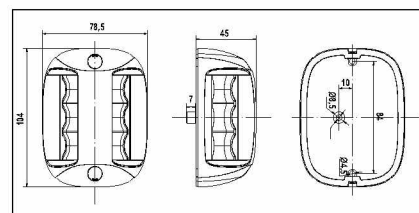
71974



71975

FOS LED 20**Bi-color light, side mount**

- For vessels between 12-20m
- Visible distance: 2 nm
- 12-24 V DC & 3W
- Red & Green LED light
- Vertical Mounted
- Last for 50.000 hours
- Waterproof, non-corrosive, non-magnetic
- Included:
 1. Screw DIN7981 / ISO 7049 M4.2x32mm (2 pieces per item),
 2. 1.2m length of wire per product,
 3. double-side adhesive sticker that can be used as drilling drawing
- Weight: 235gr/pc



Dimensions are in mm

Code	71974	71975
Housing	Black	White