



PARTS CATALOGUE

25B'04 (69R4)

25X'04 (69X4)

30H'04 (69S4)

FOREWORD

This Parts Catalogue is related to the parts for the model(s) on the cover page. When you are ordering replacement parts, please refer to this Parts Catalogue and quote both part numbers and part names correctly.

1. Modifications or additions which have been made after the issue of the Parts Catalogue will be announced in the Parts News.
It is advisable that you make the necessary corrections to the Parts Catalogue according to the Parts News.

2. Abbreviations

The following abbreviations are used in this Parts Catalogue.

“UR” Use specified parts number.

“UN” Use as many as needed.

“AP” Alternate Parts

“LM” Locally Made (Parts need to be ordered locally)

“F#” Frame No. (Applicable machine No.)

“O/S” Over Size

3. The number of components for assembly

- Parts, which are to be supplied in an assembly, are listed with a dot (.) in front of the part name as shown below.
- The numeral appearing to the right of each component part indicates the quantity of parts for each assembly unit.

PART NO.	DESCRIPTION	Q'TY	REMARKS
2F5-83310-60	FRONT FLASHER LIGHT ASSY	2	
115-83311-60	.BULB (6V-18W)	1	

4. Applicable colours of graphics are represented in the “REMARKS” as shown below.

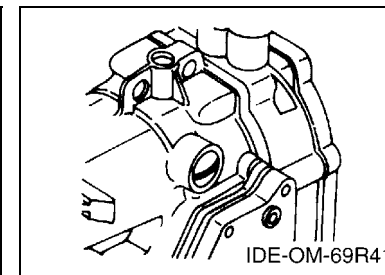
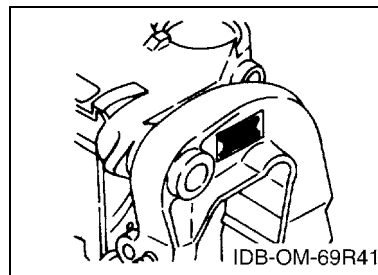
PART NO.	DESCRIPTION	Q'TY	REMARKS
2N4-24110-00-X5	FUEL TANK COMP.	2	MXR
3J1-24240-10	.GRAPHIC, FUEL TANK	1	FOR MXR

5. Note that the illustrations for reference in finding parts numbers are not to be used for assembling. When assembling, please use the applicable service manual.

6. The asterisk (*) before a reference number indicates modified items after the first edition.

7. Applicable Serial No.

Engine Serial No.



8. Applicable Engine Starting Serial No.

Model	Serial No.	Model	Serial No.
25B	61RK-1004702	25X	69XK-1000082
30H	61TK-1004870		

9. Applicable Colour Code

Abbreviation	Colour Name	Colour Code
DBNM2	DARK BLUISH GRAY METALLIC 2	004D

10. Quantity Column Information

Column No.	Name Of Q'ty Column	Applicable Model
1	MH	25BMH,25XMH,30HMH
2	W	30HW

CONTENTS

SHEET1/2
TOP COWLING A4
CYLINDER & CRANKCASE A5
CRANKSHAFT & PISTON A7
INTAKE B1
CARBURETOR B3
FUEL B4
STARTER B6
GENERATOR C1
ELECTRICAL 1 C2
ELECTRICAL 2 C4
STARTING MOTOR C6
BOTTOM COWLING C7
STEERING D1
CONTROL 1 D2
CONTROL 2 D4
REMO CON ATTACHMENT D5
BRACKET 1 D6
BRACKET 2 E1
UPPER CASING E3
LOWER CASING & DRIVE 1 E4
LOWER CASING & DRIVE 2 E7
FUEL TANK F1
STEERING GUIDE F2
REMOTE CONTROL BOX F3
REMOTE CONTROL ASSY F4
REPAIR KIT 1 F7

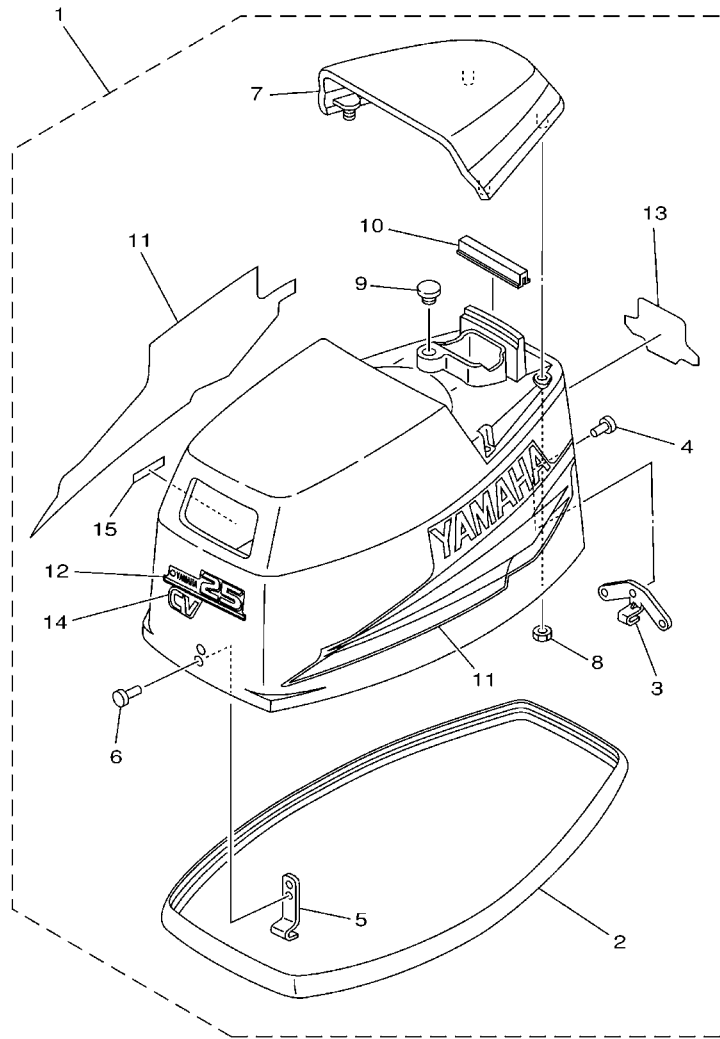
INDEX

NUMERICAL INDEX G1

SHEET2/2
REPAIR KIT 2 A4*

INDEX

NUMERICAL INDEX G1*



69R2010-2010

FIG. 1 TOP COWLING

REF. NO.	PART NO.	DESCRIPTION	MH	W		REMARKS
1	69R-42610-40-4D	TOP COWLING ASSY	1			25B
	69R-42610-20-4D	TOP COWLING ASSY	1			25X
	69S-42610-40-4D	TOP COWLING ASSY	1	1		30H
2	6G0-42615-00	.SEAL	1	1		
3	689-42647-00	.HOLDER, CLAMP BAND	1	1		
4	90266-04M01	.RIVET	3	3		
5	6G0-42651-02	.HOOK	1	1		
6	90266-04M00	.RIVET	2	2		
7	69P-42613-00-4D	.MOLDING, AIR DUCT	1	1		
8	90179-06M24	.NUT	4	4		
9	90480-14M14	.GROMMET	1	1		
10	61N-42628-00	.SEAL	1	1		
11	61R-W0070-10	.GRAPHIC SET	1	1		
12	69R-42677-00	.GRAPHIC, FRONT	1			25B,25X
	69S-42677-00	.GRAPHIC, FRONT	1	1		30H
13	61R-42678-10	.GRAPHIC, REAR	1			25B,25X
	61T-42678-10	.GRAPHIC, REAR	1	1		30H
14	61R-42683-F0	.MARK, COWLING	1	1		25B,30H- CV
15	6E0-44191-11	.INDICATOR, SHIFT	1	1		

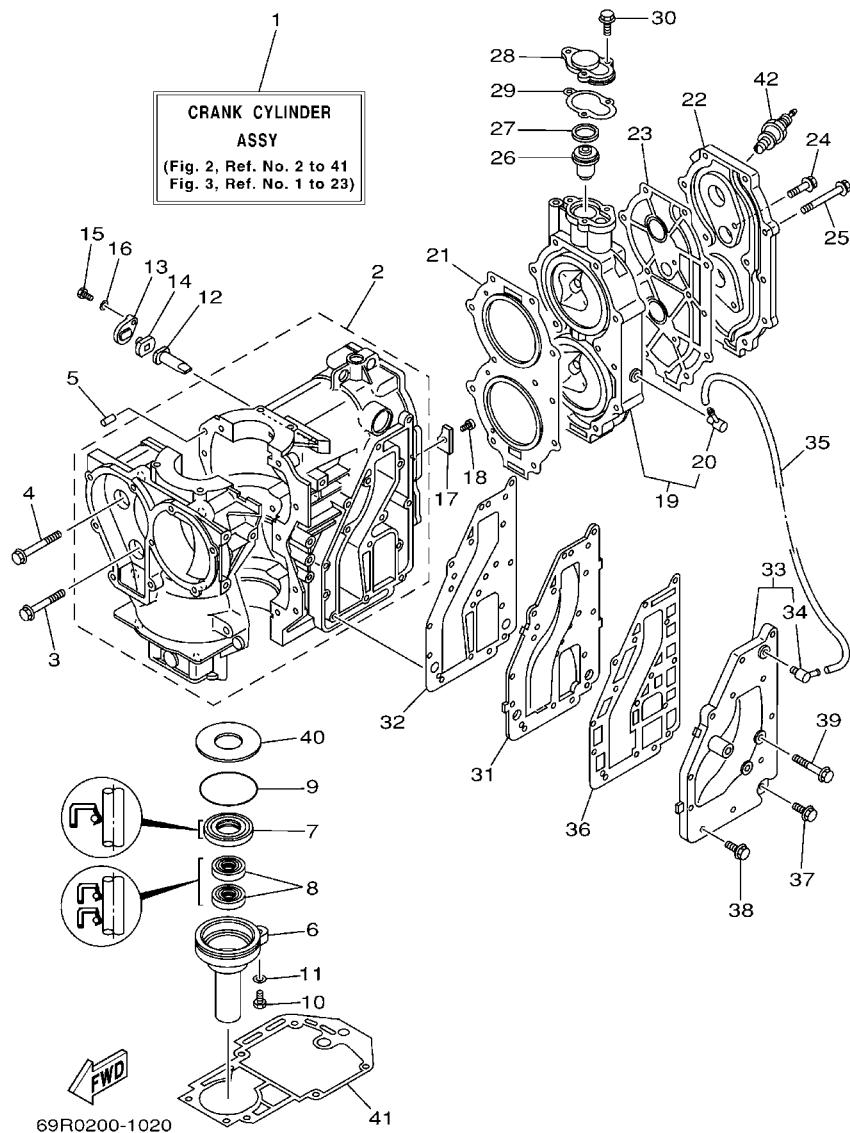


FIG. 2 CYLINDER & CRANKCASE

REF. NO.	PART NO.	DESCRIPTION	MH	W		REMARKS
1	69P-W0090-00-1S	CRANK CYLINDER ASSY	1			25B
	69S-W0090-00-1S	CRANK CYLINDER ASSY	1	1		25X,30H
2	69P-15100-00-1S	CRANKCASE ASSY	1	1		
3	90119-08009	BOLT, WITH WASHER	2	2		
4	90119-08M65	BOLT, WITH WASHER	8	8		
5	93606-12019	PIN, DOWEL	2	2		
6	689-15396-01-5B	HOUSING, OIL SEAL	1	1		
7	93102-25008	OIL SEAL	1	1		
8	93101-16001	OIL SEAL	2	2		
9	93210-58M21	O-RING	1	1		
10	97095-06022	BOLT	1	1		
11	92995-06600	WASHER	1	1		
12	6J8-11325-00	ANODE	1	1		
13	6H3-11327-00-1S	COVER, ANODE	1	1		
14	6H3-11328-00	GROMMET, ANODE	1	1		
15	97013-06016	BOLT	1	1		
16	92903-06600	WASHER, PLATE	1	1		
17	689-11325-00	ANODE	1	1		
18	90151-06M02	SCREW, COUNTERSUNK	1	1		
19	61N-11111-01-1S	HEAD, CYLINDER 1	1			25B
	61T-11111-01-1S	HEAD, CYLINDER 1	1	1		25X,30H
20	676-11372-00	.NIPPLE, HOSE	1	1		
21	61N-11181-A1	GASKET, CYLINDER HEAD 1	1	1		
22	61N-11191-01-1S	COVER, CYLINDER HEAD 1	1	1		
23	61T-11193-A1	GASKET, HEAD COVER 1	1	1		
24	90119-06MA2	BOLT, WITH WASHER	2	2		
25	90119-08015	BOLT, WITH WASHER	11	11		

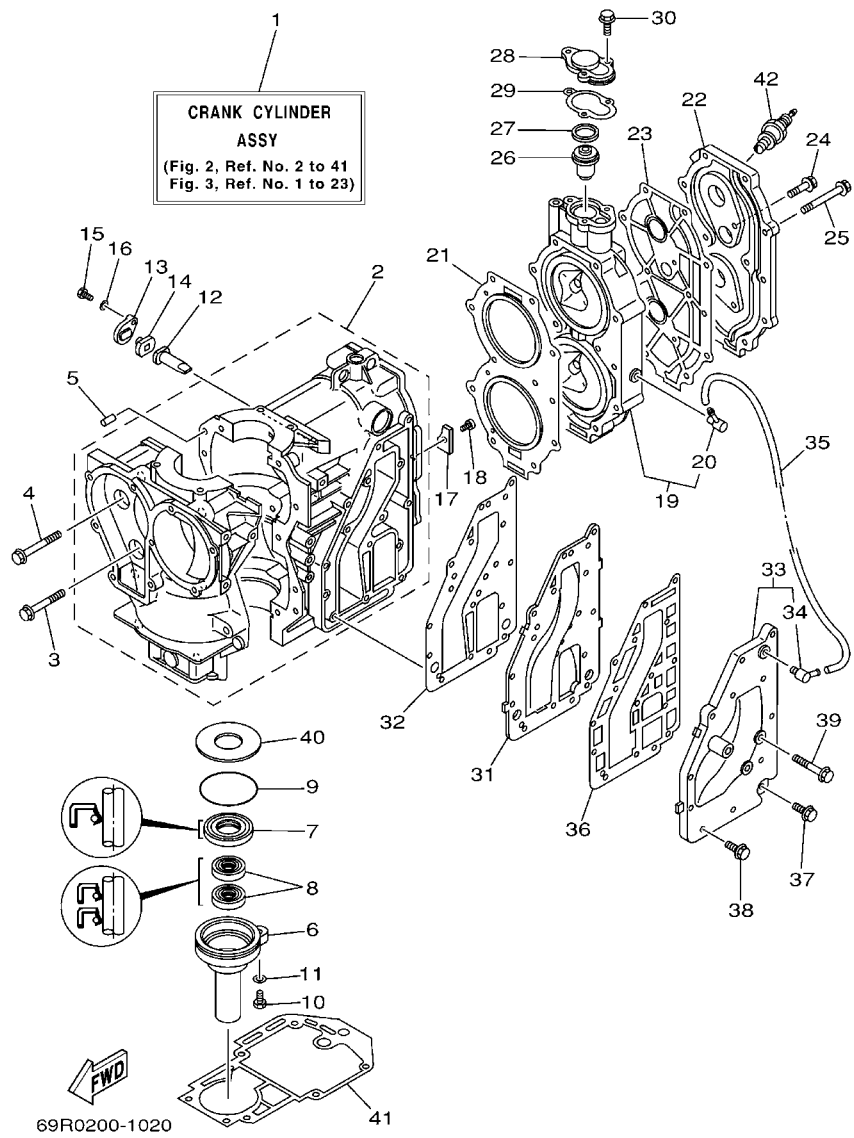
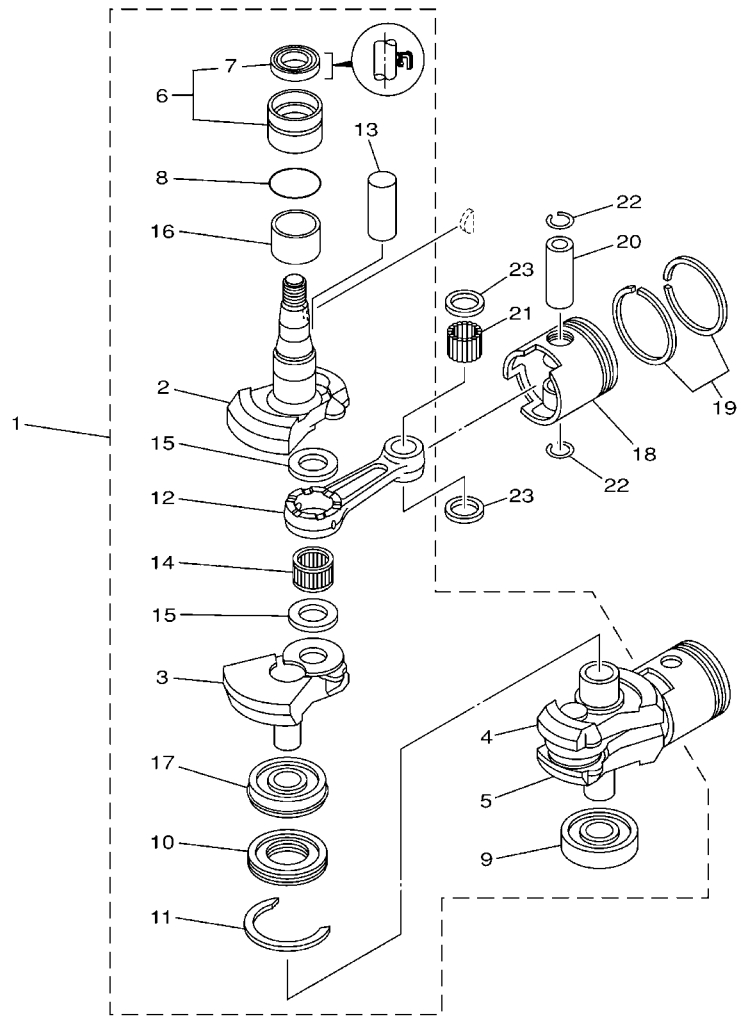


FIG. 2 CYLINDER & CRANKCASE

REF. NO.	PART NO.	DESCRIPTION	MH	W	REMARKS
26	6E5-12411-01	THERMOSTAT	1	1	
27	90201-21567	WASHER, PLATE	1	1	
28	655-12413-01-1S	COVER, THERMOSTAT	1	1	
29	655-12414-A1	GASKET, COVER	1	1	
30	90119-06MA2	BOLT, WITH WASHER	3	3	
31	6K8-41121-00-1S	INNER COVER, EXHAUST	1	1	
32	6K8-41122-A1	GASKET, EXHAUST INNER COVER	1	1	
33	61N-41123-00-1S	OUTER COVER, EXHAUST	1	1	
34	676-11372-00	.NIPPLE, HOSE	1	1	
35	90445-10M41	HOSE (L105)	1	1	
36	6K8-41124-A1	GASKET, EXHAUST OUTER COVER	1	1	
37	90119-06MA3	BOLT, WITH WASHER	1	1	
38	90119-06MA4	BOLT, WITH WASHER	11	11	
39	90119-06MA0	BOLT, WITH WASHER	3	3	
40	90201-50306	WASHER, PLATE	1	1	
41	689-45113-A1	GASKET, UPPER CASING	1	1	
42	94702-00271	PLUG, SPARK (NGK BR7HS-10)	2		25B
	94702-00247	PLUG, SPARK (NGK BR8HS-10)	2	2	25X,30H



FWD
69R0010-1030

FIG. 3 CRANKSHAFT & PISTON

REF. NO.	PART NO.	DESCRIPTION	MH	W		REMARKS
1	69P-11400-00	CRANKSHAFT ASSY	1	1		
2	69P-11412-00	.CRANK 1	1	1		
3	61N-11422-00	.CRANK 2	1	1		
4	61N-11432-00	.CRANK 3	1	1		
5	61N-11442-00	.CRANK 4	1	1		
6	93399-99951	.BEARING	1	1		
7	93102-32M07	.OIL SEAL	1	1		
8	93210-46M16	.O-RING	1	1		
9	93306-305U3	.BEARING	1	1		
10	61N-11515-00	.SEAL, LABYRINTH 1	1	1		
11	93440-62057	.CIRCLIP	1	1		
12	689-11651-00	.ROD, CONNECTING	2	2		
13	689-11681-01	.PIN, CRANK 1	2	2		
14	93310-62406	.BEARING	2	2		
15	90209-24M03	.WASHER	4	4		
16	90387-32002	.COLLAR	1	1		
17	93390-00009	.BEARING	1	1		
18	61N-11631-00-95	PISTON (STD)	2	2		
	61N-11635-00	PISTON (0.25MM O/S)	2	2		AP
	61N-11636-00	PISTON (0.50MM O/S)	2	2		AP
19	61N-11603-00	PISTON RING SET (STD)	2	2		
	61N-11604-00	PISTON RING SET (0.25MM O/S)	2	2		AP
	61N-11605-00	PISTON RING SET (0.50MM O/S)	2	2		AP
20	689-11633-00	PIN, PISTON	2	2		
21	93602-20M02	PIN, DOWEL	68	68		
22	688-11634-00	CLIP, PISTON PIN	4	4		
23	90201-20M27	WASHER, PLATE	4	4		

A7

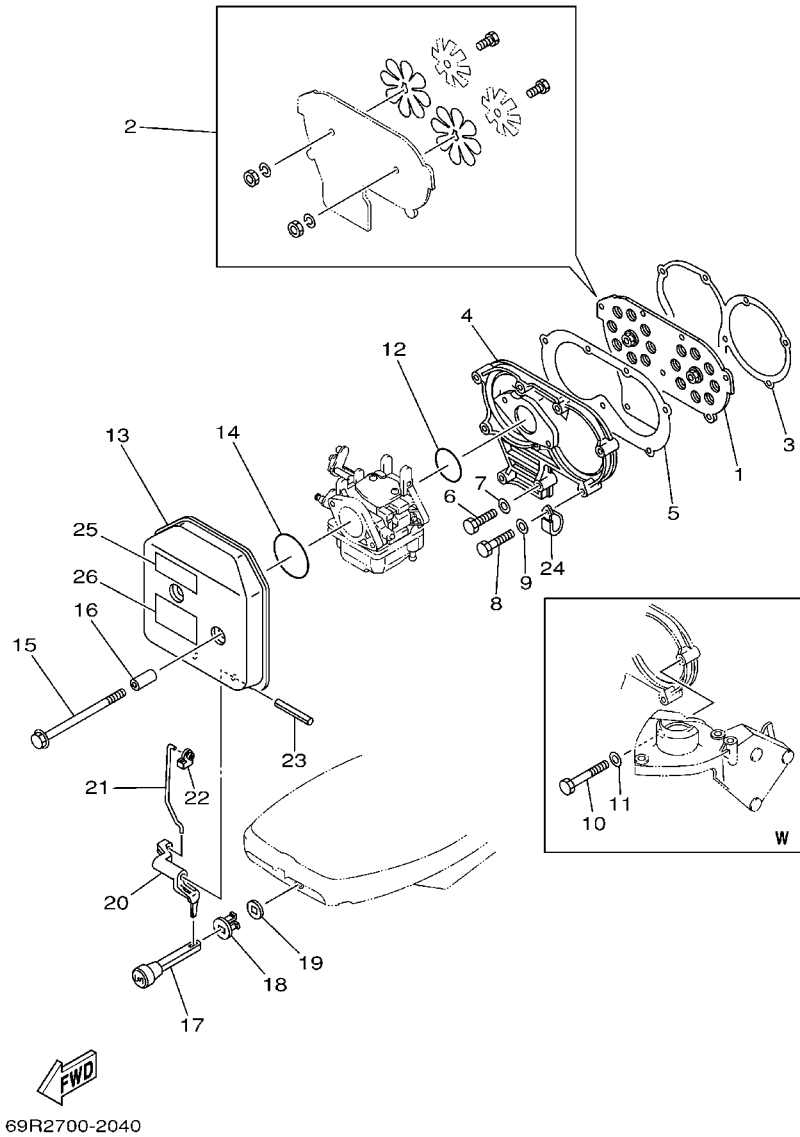


FIG. 4 INTAKE

REF. NO.	PART NO.	DESCRIPTION	MH	W			REMARKS
1	61N-13610-00	REED VALVE ASSY	1				25B
	689-13610-01	REED VALVE ASSY	1	1			25X,30H
2	689-W0004-00	.REED SET	1	1			
3	648-13621-A1	GASKET, VALVE SEAT	1	1			
4	61N-13641-01-1S	MANIFOLD 1	1	1			
5	648-13645-A0	GASKET, MANIFOLD 1	1	1			
6	97013-06025	BOLT	2	2			
7	92903-06600	WASHER, PLATE	2	2			
8	97013-06035	BOLT	7				
	97013-06035	BOLT		6			
9	92903-06600	WASHER, PLATE	7				
	92903-06600	WASHER, PLATE		6			
10	97013-06050	BOLT		1			
11	92903-06600	WASHER, PLATE		1			
12	61N-14198-00	GASKET	1	1			
13	61N-14440-00	SILENCER ASSY, INTAKE	1	1			
14	93210-40659	O-RING	1	1			
15	90119-06M94	BOLT, WITH WASHER	2	2			
16	90387-06M26	COLLAR	2	2			
17	682-41271-00	KNOB, CHOKE	1	1			
18	689-41273-00	GROMMET	1	1			
19	6J8-41274-00	GROMMET 2	1	1			
20	689-41252-01	LEVER, CHOKE 1	1	1			
21	61N-41256-00	ROD, CHOKE 1	1	1			
22	661-41262-02	JOINT, CHOKE LEVER	1	1			
23	91690-40048	PIN, SPRING	1	1			
24	90465-06M88	CLAMP	1	1			

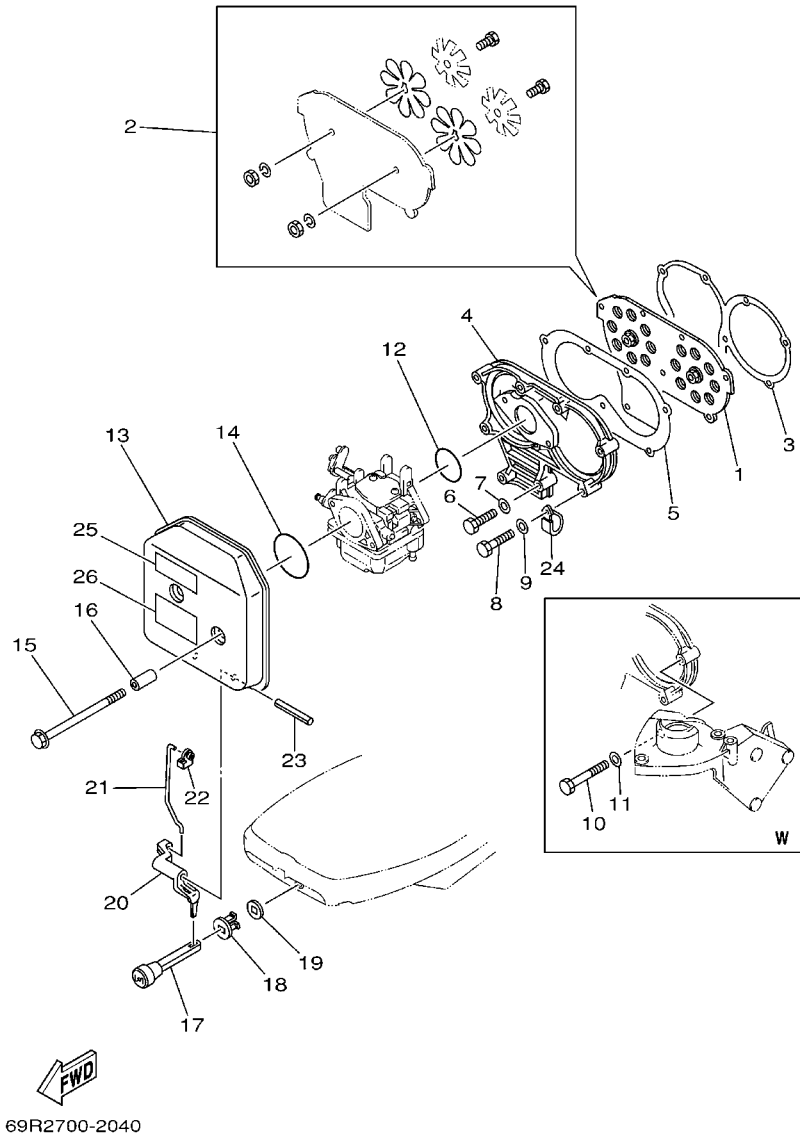
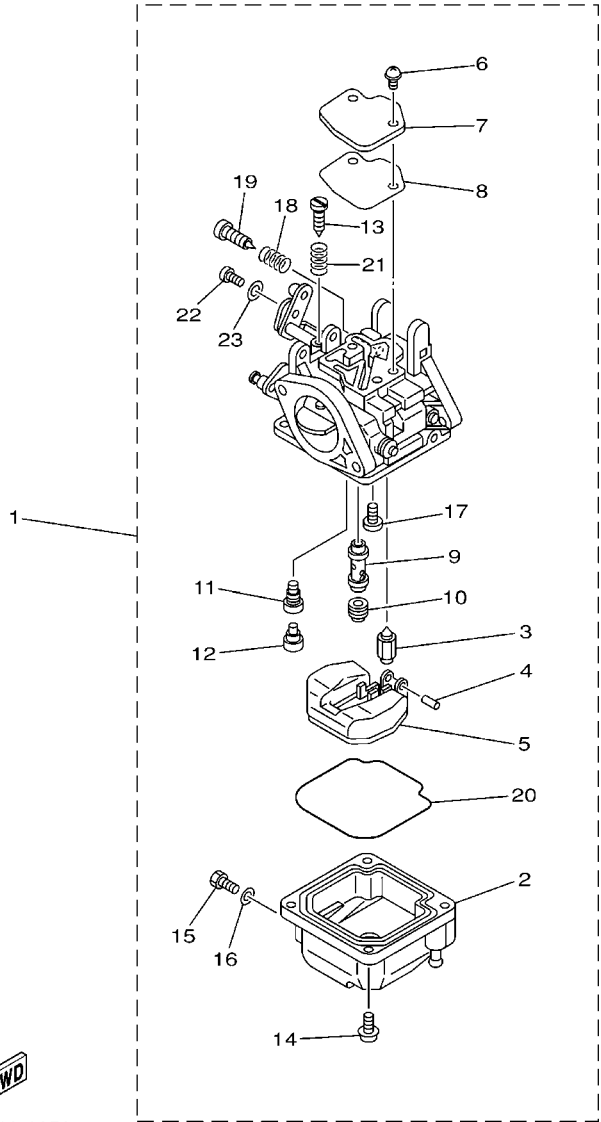


FIG. 4 INTAKE

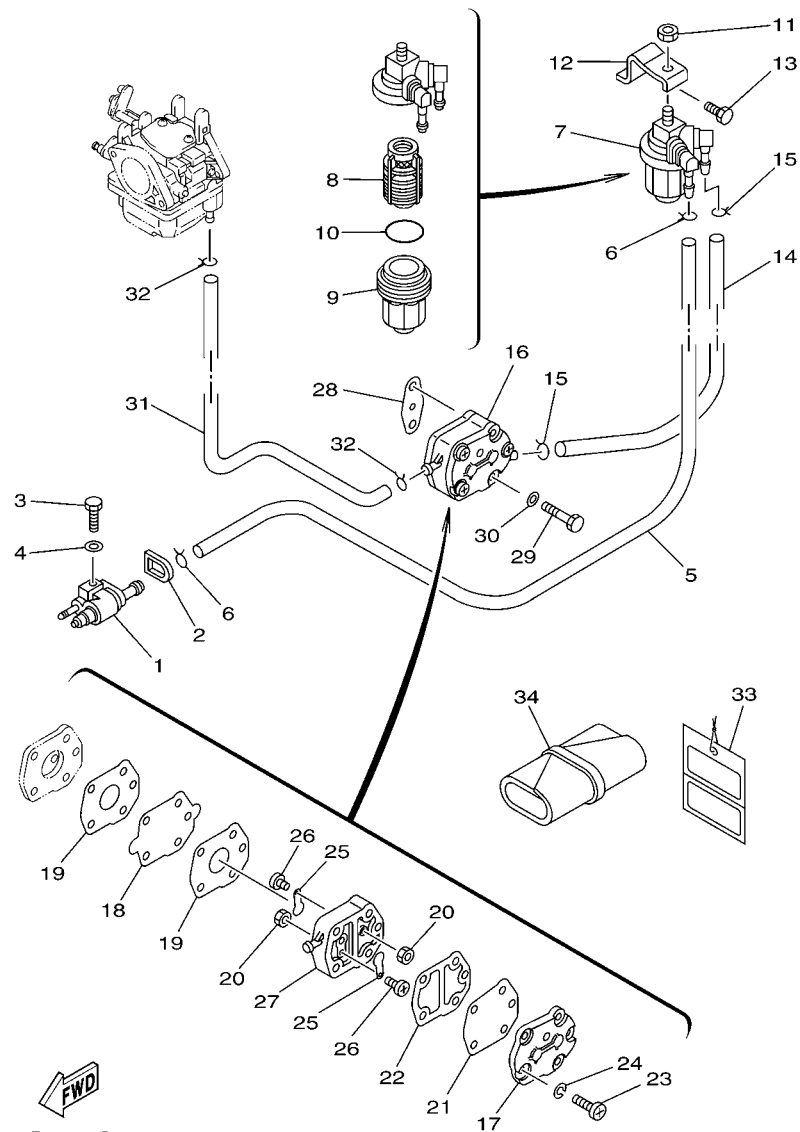
REF. NO.	PART NO.	DESCRIPTION	MH	W				REMARKS
25	6A1-83625-41	MARK 5	1	1				
26	6A1-83625-51	MARK 5		1				




 69R0010-1050

FIG. 5 CARBURETOR

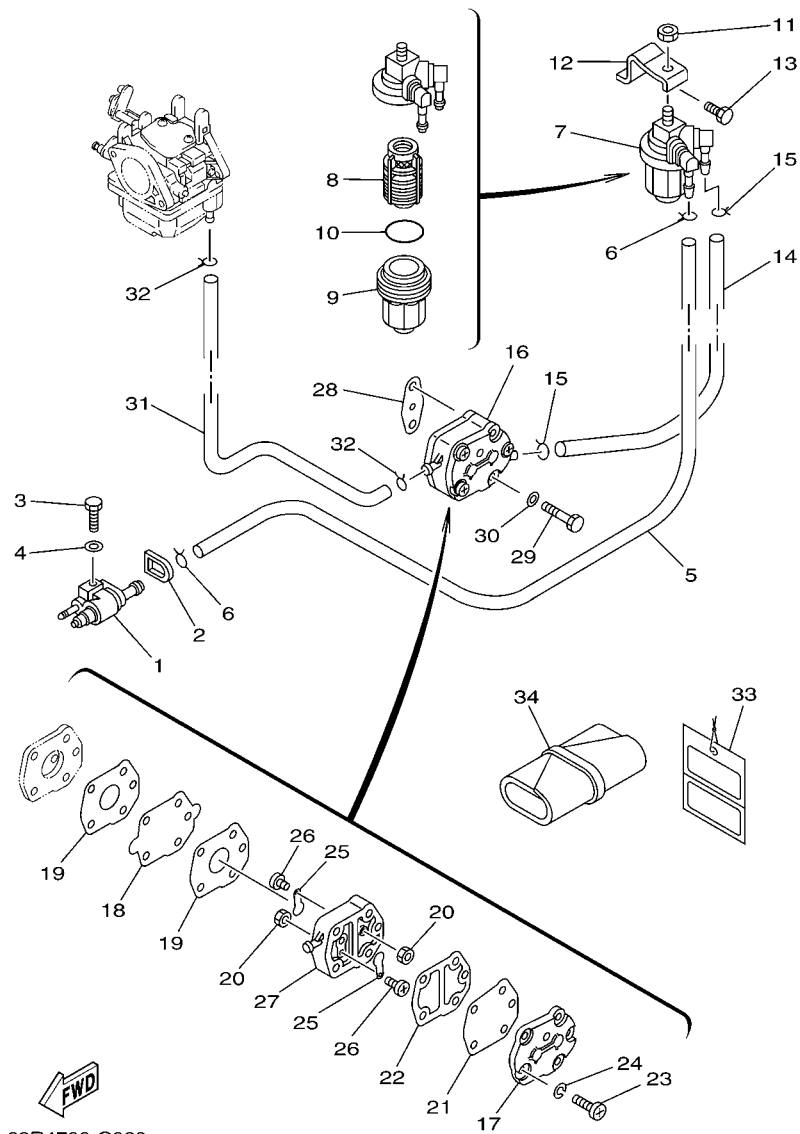
REF. NO.	PART NO.	DESCRIPTION	MH	W	REMARKS
1	69P-14301-00	CARBURETOR ASSY 1	1		25B
	69S-14301-00	CARBURETOR ASSY 1	1	1	25X,30H
2	61N-14381-00	.BODY, FLOAT CHAMBER	1	1	
3	61N-14392-00	.VALVE, NEEDLE	1	1	
4	6E5-14386-01	.PIN, FLOAT	1	1	
5	6L2-14385-00	.FLOAT	1	1	
6	97980-04110	.SCREW, WITH WASHER	2	2	
7	6L2-14157-00	.COVER, MIXING	1	1	
8	6L2-14399-00	.GASKET	1	1	
9	61N-14341-00	.NOZZLE, MAIN	1		FOR 69P-14301-00
	61T-14341-00	.NOZZLE, MAIN	1	1	FOR 69S-14301-00
10	61N-14343-65	.JET, MAIN (#130)	1	1	
11	6L2-14342-34	.JET, PILOT (# 68)	1	1	
12	50M-14355-00	.PLUG	1	1	
13	664-14321-01	.SCREW, THROTTLE	1	1	
14	97980-04112	.SCREW, WITH WASHER	4	4	
15	677-14383-01	.SCREW, DRAIN	1	1	
16	6L2-14398-00	.GASKET	1	1	
17	98980-04006	.SCREW, BIND	2	2	
18	646-14212-01	.SPRING, PILOT ADJUSTING	1	1	
19	61N-14323-00	.SCREW, AIR ADJUSTING	1	1	
20	6L2-14384-00	.GASKET, FLOAT CHAMBER	1	1	
21	61N-14212-00	.SPRING, PILOT ADJUSTING	1	1	
22	97890-05006	.SCREW, PAN HEAD	1	1	
23	62Y-14597-00	.WASHER	1	1	



69R4700-C060

FIG. 6 FUEL

REF. NO.	PART NO.	DESCRIPTION	MH	W	REMARKS
1	6G1-24304-02	FUEL PIPE JOINT COMP. 1	1	1	
2	61N-24329-00	SEAL	1	1	
3	97095-06020	BOLT	1	1	
4	92995-06600	WASHER	1	1	
5	90445-09M75	HOSE (L370)	1	1	
6	90467-08004	CLIP	2	2	
7	61N-24560-00	FILTER ASSY	1	1	
8	61N-24563-00	.ELEMENT, FILTER	1	1	
9	61N-24521-00	.CUP, FILTER	1	1	
10	93210-32738	.O-RING	1	1	
11	95380-08600	NUT	1	1	
12	61N-24566-01	BRACKET, FILTER	1	1	
13	97013-06014	BOLT	1	1	
14	689-24311-00	PIPE, FUEL 1	1	1	
15	90467-08004	CLIP	2	2	
16	692-24410-00	FUEL PUMP ASSY	1	1	
17	6A0-24413-00	.BODY 2	1	1	
18	692-24411-00	.DIAPHRAGM	1	1	
19	648-24434-01	.GASKET, BODY	2	2	
20	95380-03600	.NUT	2	2	
21	663-24411-00	.DIAPHRAGM	1	1	
22	648-24435-02	.GASKET, BODY 2	1	1	
23	98503-05028	.SCREW, PAN HEAD	3	3	
24	92990-05100	.WASHER, SPRING	3	3	
25	6A0-24421-01	.VALVE, CHECK	2	2	
26	6A0-14325-00	.SCREW, PAN HEAD	2	2	
27	6A0-24412-02	.BODY 1	1	1	



69R4700-C060

FIG. 6 FUEL

REF. NO.	PART NO.	DESCRIPTION	MH	W		REMARKS
28	650-24431-A0	GASKET, FUEL PUMP 1	1	1		
29	97095-06040	BOLT	2	2		
30	92995-06600	WASHER	2	2		
31	6A1-24311-00	PIPE, FUEL 1	1	1		
32	90467-08004	CLIP	2	2		
33	61H-2819R-31	TAG, WARNING	1	1		
34	656-W2810-02	TOOL KIT	1	1		AP
<hr/>						
<hr/>						
<hr/>						
<hr/>						
<hr/>						
<hr/>						
<hr/>						

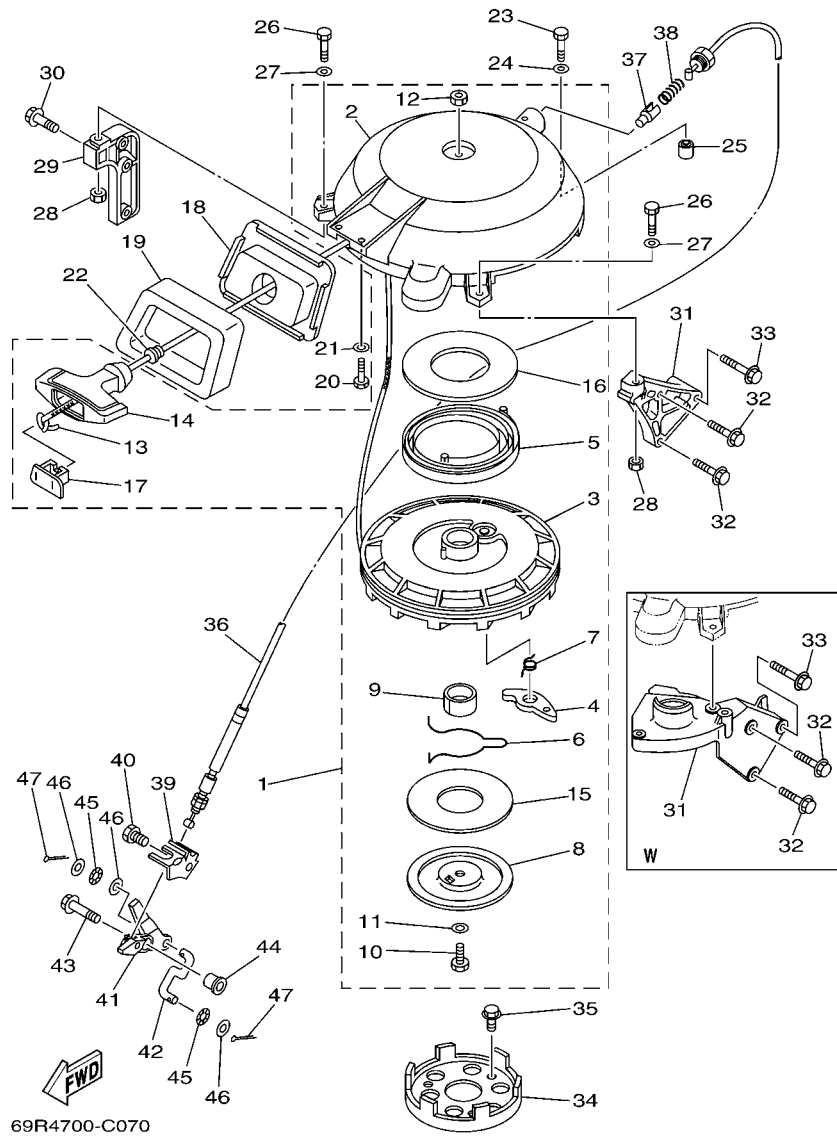
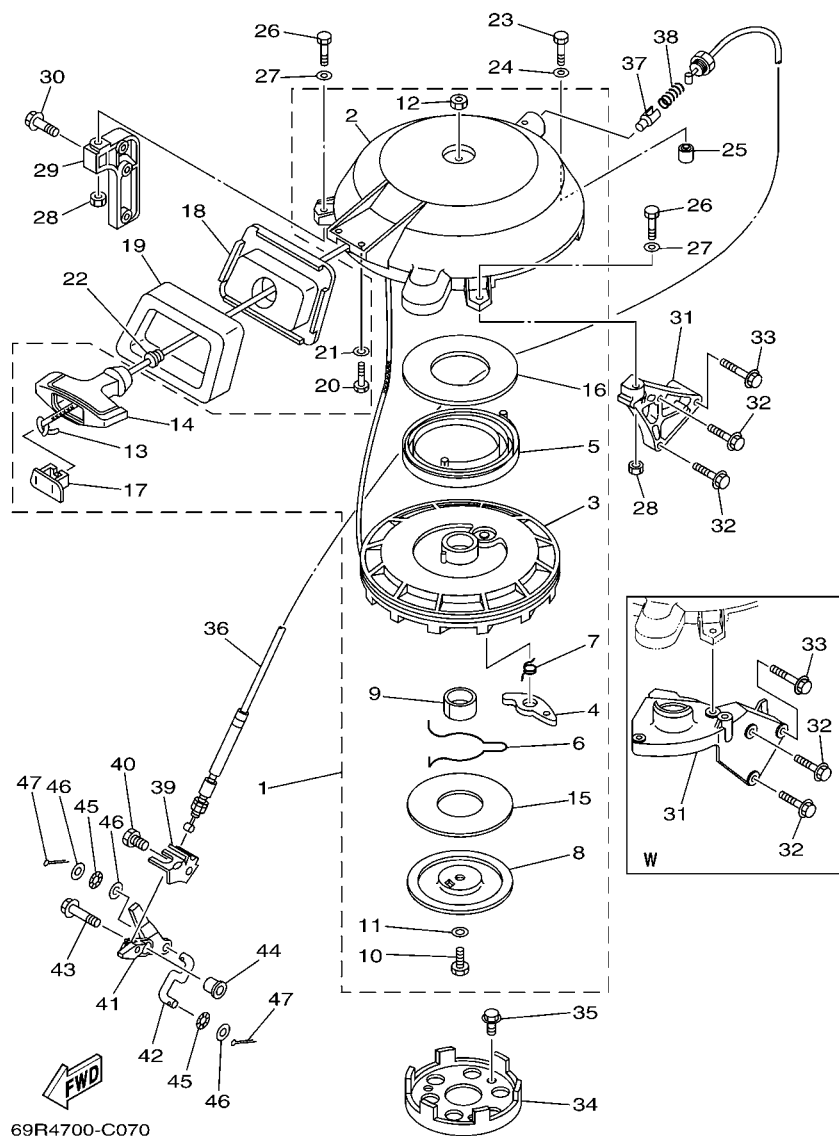


FIG. 7 STARTER

REF. NO.	PART NO.	DESCRIPTION	MH	W	REMARKS
1	61N-W1571-11	STARTER ASSY	1	1	
2	61N-15711-10	.CASE, STARTER	1	1	
3	6G0-15714-01	.DRUM, SHEAVE	1	1	
4	6F5-15741-01	.PAWL, DRIVE	1	1	
5	6F5-15713-01	.SPRING, STARTER	1	1	
6	61N-15715-00	.SPRING, FRICTION	1	1	
7	61N-15734-00	.SPRING, RETURN	1	1	
8	6F5-15716-01	.PLATE, DRIVE	1	1	
9	6G0-15754-00	.BUSH 2	1	1	
10	97013-08030	.BOLT	1	1	
11	6F5-15726-01	.WASHER, FLAT	1	1	
12	95303-08700	.NUT	1	1	
13	*	.WIRE (L:1900MM)	1	1	*1
14	689-15755-01	.HANDLE, STARTER	1	1	
15	6F5-15764-00	.COLLAR 1	1	1	
16	6F5-15739-00	.WASHER, THRUST	1	1	
17	6F5-15779-02	.COVER	1	1	
18	61N-15758-01-4D	GUIDE, ROPE	1	1	
19	61N-15762-00	SEAL, RUBBER 2	1	1	
20	97095-06016	BOLT	2	2	
21	92995-06600	WASHER	2	2	
22	6A0-15789-00	DAMPER	1	1	
23	97095-06035	BOLT	1	1	
24	92995-06600	WASHER	1	1	
25	99530-10014	PIN, DOWEL	1	1	
26	97095-06035	BOLT	2	2	
27	92995-06600	WASHER	2	2	

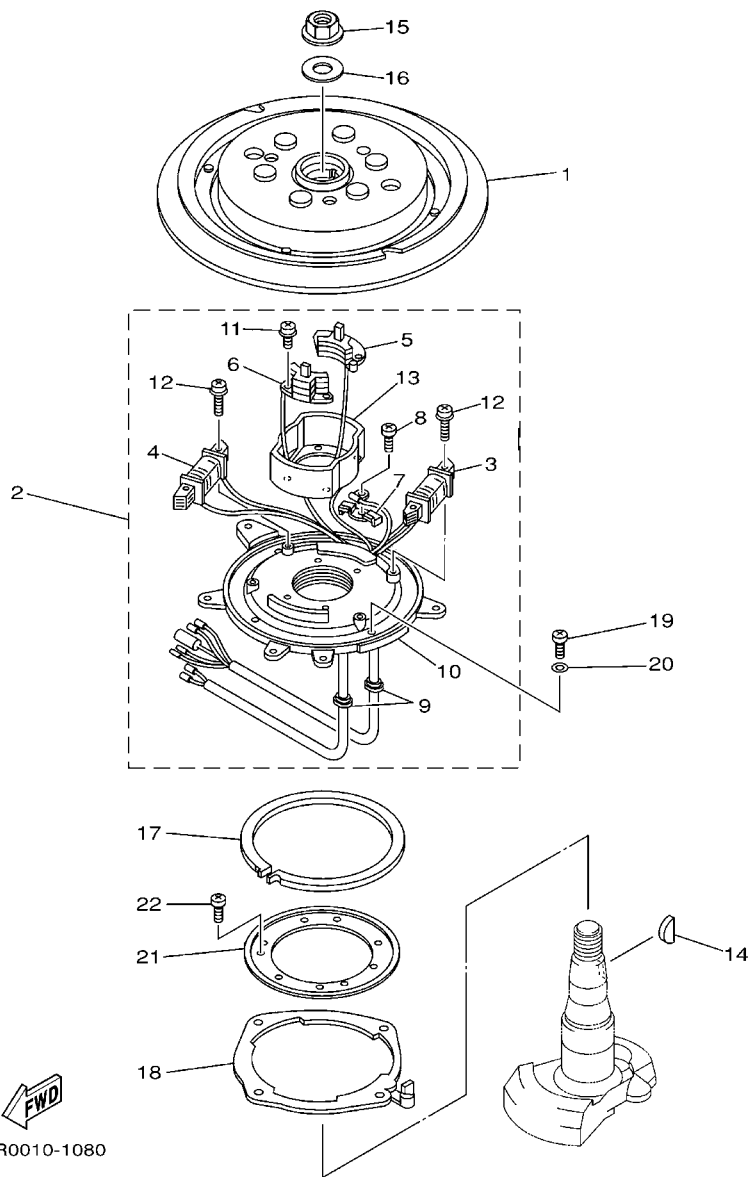
FIG. 7 STARTER



*1: CUT FROM 50M ROLLS, PART NO.90890-44373, CUTTING LENGTH 1.9M

REF. NO.	PART NO.	DESCRIPTION	MH	W				REMARKS
28	95380-06600	NUT, HEXAGON	2					
	95380-06600	NUT, HEXAGON		1				
29	6H7-15771-01-94	STAY 1	1	1				
30	90119-06MA3	BOLT, WITH WASHER	2	2				
31	656-15772-00-94	STAY 2	1					
	61T-15772-01-94	STAY 2		1				
32	90119-06MA3	BOLT, WITH WASHER	2					
	90119-06MA4	BOLT, WITH WASHER		2				
33	90119-06025	BOLT, WITH WASHER	1	1				
34	6F5-15723-01	PULLEY, STARTER	1	1				
35	90105-08M10	BOLT, FLANGE	3	3				
36	61T-15770-00	CABLE COMP., STARTER STOP	1	1				
37	656-15748-00	PLUNGER, STARTER STOP	1	1				
38	90501-10227	SPRING, COMPRESSION	1	1				
39	69P-15774-00	STAY 4	1	1				
40	97095-06010	BOLT	1	1				
41	69P-15746-00	ARM	1	1				
42	689-15747-70	LINK	1	1				
43	90119-06M23	BOLT, WITH WASHER	1	1				
44	90387-06013	COLLAR	1	1				
45	90206-05005	WASHER, WAVE	2	2				
46	92903-05600	WASHER, PLATE	3	3				
47	91490-16010	PIN, COTTER	2	2				

FIG. 8 GENERATOR



69R0010-1080

REF. NO.	PART NO.	DESCRIPTION	MH	W			REMARKS
1	61N-85550-10	ROTOR ASSY	1				
	61T-85550-10	ROTOR ASSY		1			
2	69P-85560-00	BASE ASSY	1	1			
3	69P-85541-09	.COIL, CHARGE	1	1			
4	61N-81313-09	.COIL, LIGHTING 1	1	1			
5	61N-85543-09	.COIL, PULSER	1	1			
6	61N-85543-19	.COIL, PULSER	1	1			
7	6E9-81328-70	.CLAMP	1	1			
8	97802-04006	.SCREW, PAN HEAD	1	1			
9	6E9-85516-70	.GROMMET	2	2			
10	69P-85561-00	.BASE, MAGNETO	1	1			
11	97607-04112	.SCREW,WITH WASHER	4	4			
12	97607-06125	.SCREW,WITH WASHER	4	4			
13	61N-85537-00	.COVER	1	1			
14	90280-05015	KEY, WOODRUFF	1	1			
15	90179-16M05	NUT	1	1			
16	90201-16M44	WASHER, PLATE	1	1			
17	676-41611-00	RETAINER, MAGNETO BASE	1	1			
18	676-41613-00	PLATE, BASE FRICTION	1	1			
19	97880-05012	SCREW, PAN HEAD	4	4			
20	92990-05600	WASHER, PLATE	4	4			
21	689-41612-01	RETAINER, MAGNETO BASE	1	1			
22	97880-06010	SCREW, PAN HEAD	4	4			

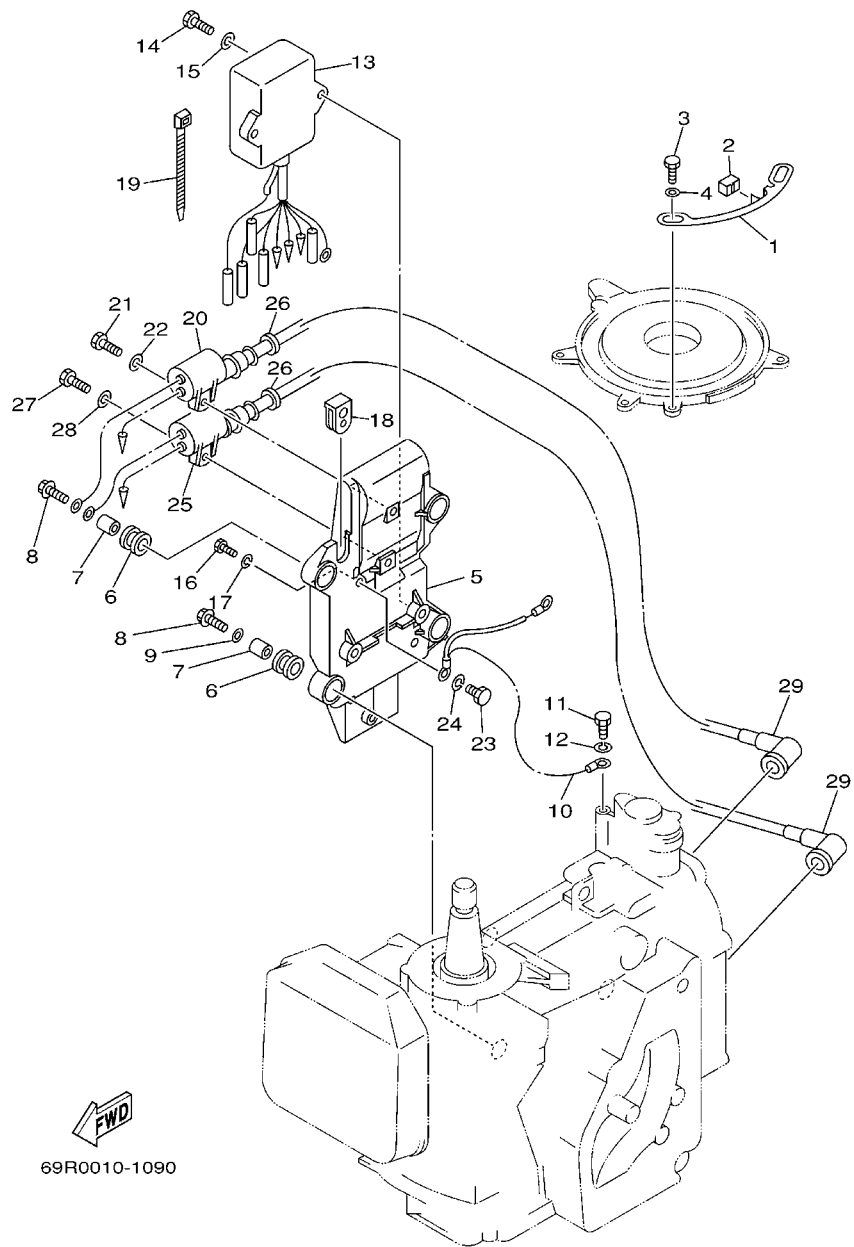
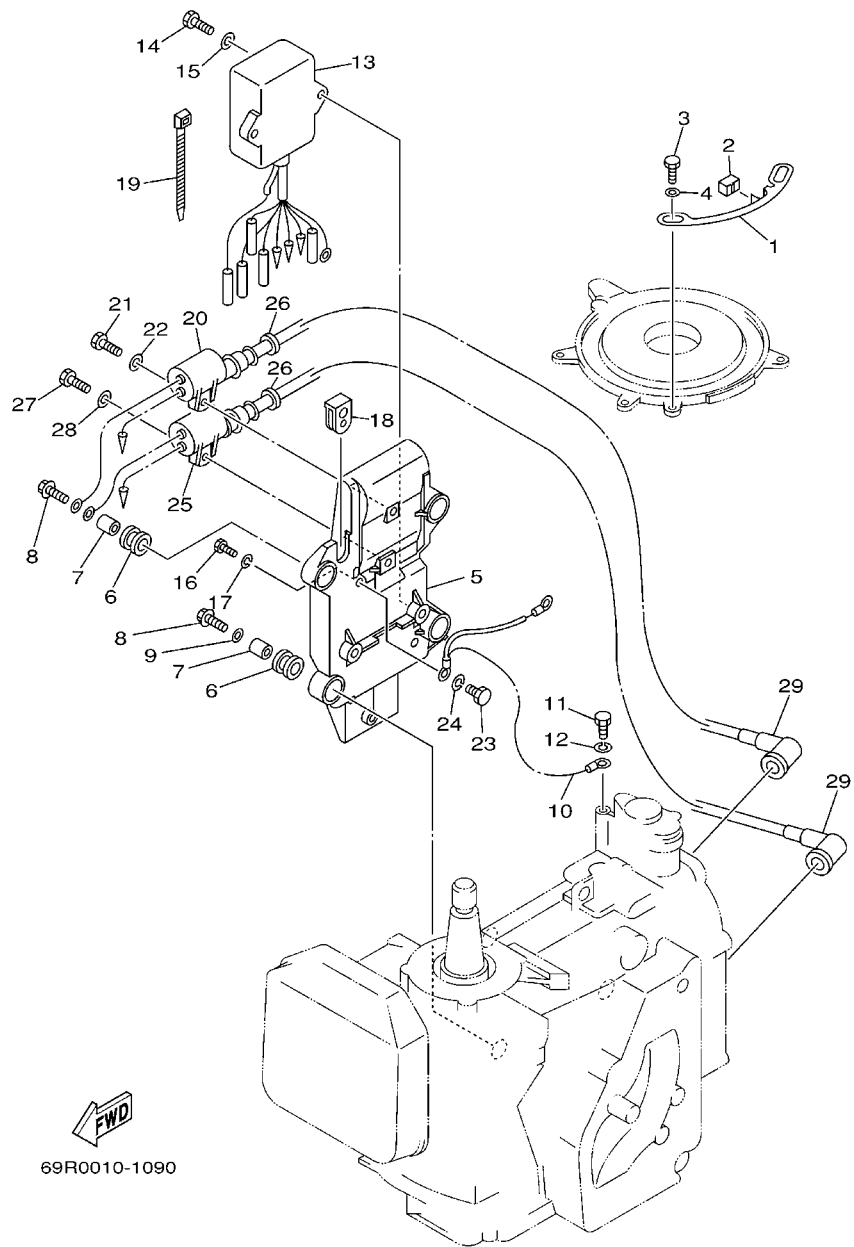


FIG. 9 ELECTRICAL 1

REF. NO.	PART NO.	DESCRIPTION	MH	W		REMARKS
1	61N-41615-00	STOPPER, MAGNETO BASE	1	1		
2	61N-44194-01	CAP	1			25B
	61T-44194-01	CAP	1	1		25X,30H
3	97095-06010	BOLT	2	2		
4	92995-06600	WASHER	2	2		
5	61N-85542-00-94	BRACKET	1	1		
6	61N-82317-00	DAMPER, IGNITION COIL	4	4		
7	624-42542-00	PIPE	4	4		
8	90119-06M95	BOLT, WITH WASHER	4	4		
9	90201-06M30	WASHER, PLATE	2	2		
10	61N-82519-01	WIRE, EARTH LEAD	1	1		
11	97090-06012	BOLT	1	1		
12	92990-06100	WASHER, SPRING	1	1		
13	61N-85540-13	C.D.I. UNIT ASSY	1	1		25B,30H
	69X-85540-00	C.D.I. UNIT ASSY	1			25X
14	97095-06020	BOLT	2	2		
15	92995-06600	WASHER	2	2		
16	97090-06012	BOLT	1	1		
17	92990-06100	WASHER, SPRING	1	1		
18	6H3-81922-00	GROMMET	1	1		
19	90465-13M11	CLAMP	1	1		
20	6H5-85570-00	IGNITION COIL ASSY	1	1		
21	97095-06020	BOLT	1	1		
22	92995-06600	WASHER	1	1		
23	97090-06012	BOLT	1	1		
24	92990-06100	WASHER, SPRING	1	1		
25	61N-85570-00	IGNITION COIL ASSY	1	1		



69R0010-1090

FIG. 9 ELECTRICAL 1

REF. NO.	PART NO.	DESCRIPTION	MH	W				REMARKS
26	90480-25161	GROMMET	2	2				
27	97095-06020	BOLT	1	1				
28	92995-06600	WASHER	1	1				
29	6G1-82370-21	PLUG CAP ASSY	2	2				

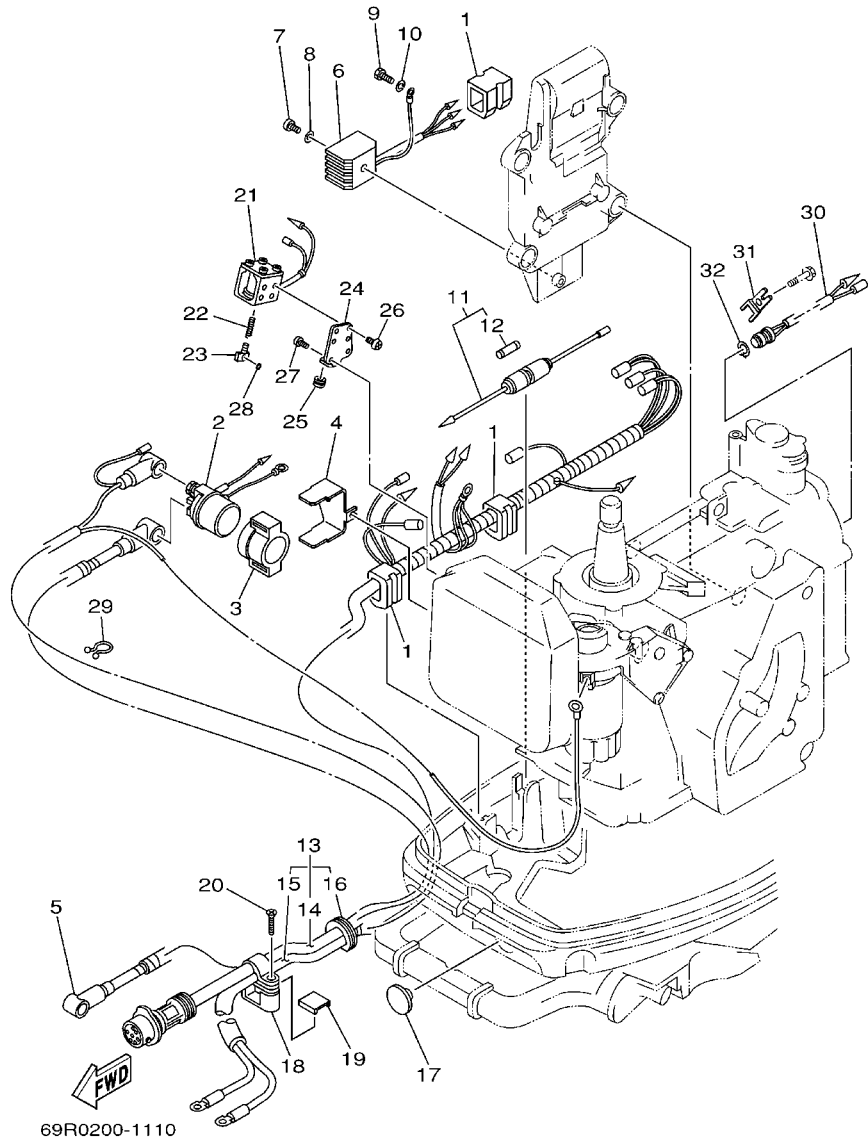


FIG. 10 ELECTRICAL 2

REF. NO.	PART NO.	DESCRIPTION	MH	W	REMARKS
1	90480-17M08	GROMMET		3	
2	6G1-81941-10	STARTER RELAY ASSY		1	
3	6G1-81952-00	HOLDER, RELAY		1	
4	61T-81945-01	PLATE, SWITCH FITTING		1	
5	689-82531-02	WIRE, LEAD		1	
6	664-81970-61	RECTIFIER ASSY		1	
7	97880-05025	SCREW, PAN HEAD		1	
8	92990-05600	WASHER, PLATE		1	
9	97090-06012	BOLT		1	
10	92990-06100	WASHER, SPRING		1	
11	682-82150-10	FUSE HOLDER ASSY		1	
12	663-82151-00	.FUSE (12V-20A)		1	
13	61T-82580-00	WIRE HARNESS ASSY 2		1	
14	61T-82590-00	.WIRE HARNESS ASSY		1	
15	689-82105-13	.WIRE HARNESS		1	
16	689-42724-50	.GROMMET		1	
17	90480-17165	GROMMET		1	
18	689-82594-10	CLAMP		1	
19	682-42525-00	PLATE, FRICTION		1	
20	90161-06M00	SCREW, TAPPING		1	
21	61T-86111-00	COIL, SOLENOID		1	
22	682-86116-00	WIRE, PULL		1	
23	682-86117-00	HOOK, WIRE PULL		1	
24	61T-86112-00	STAY, SOLENOID		1	
25	90480-10155	GROMMET		1	
26	98503-04006	SCREW, PAN HEAD		4	
27	97880-05012	SCREW, PAN HEAD		2	

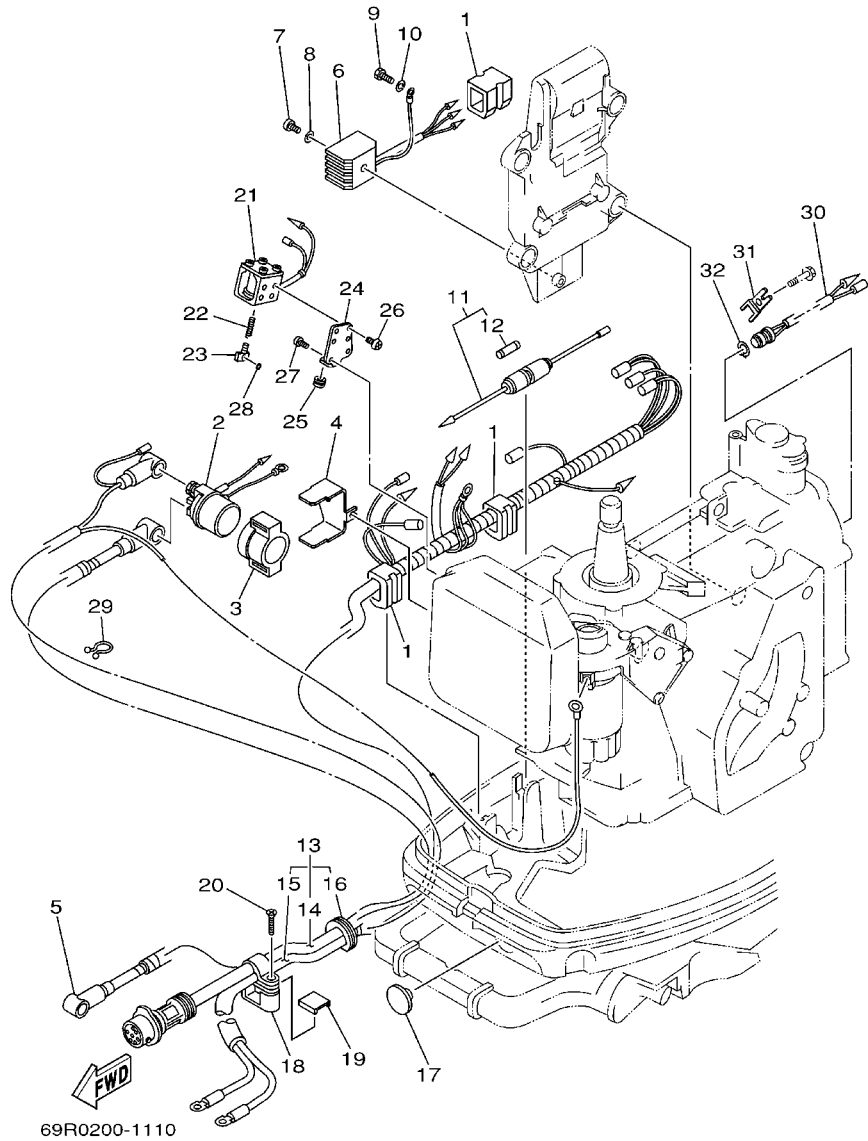
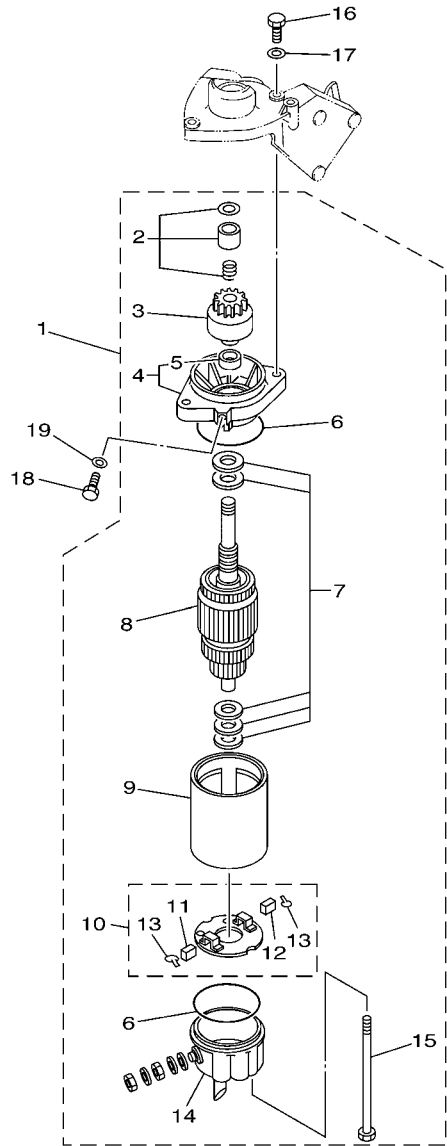


FIG. 10 ELECTRICAL 2

REF. NO.	PART NO.	DESCRIPTION	MH	W				REMARKS
28	93210-03261	O-RING		1				
29	90465-18147	CLAMP		1				
30	61T-82560-00	THERMO SWITCH ASSY		1				
31	61T-82588-00	PLATE		1				
32	99009-17500	CIRCLIP		1				

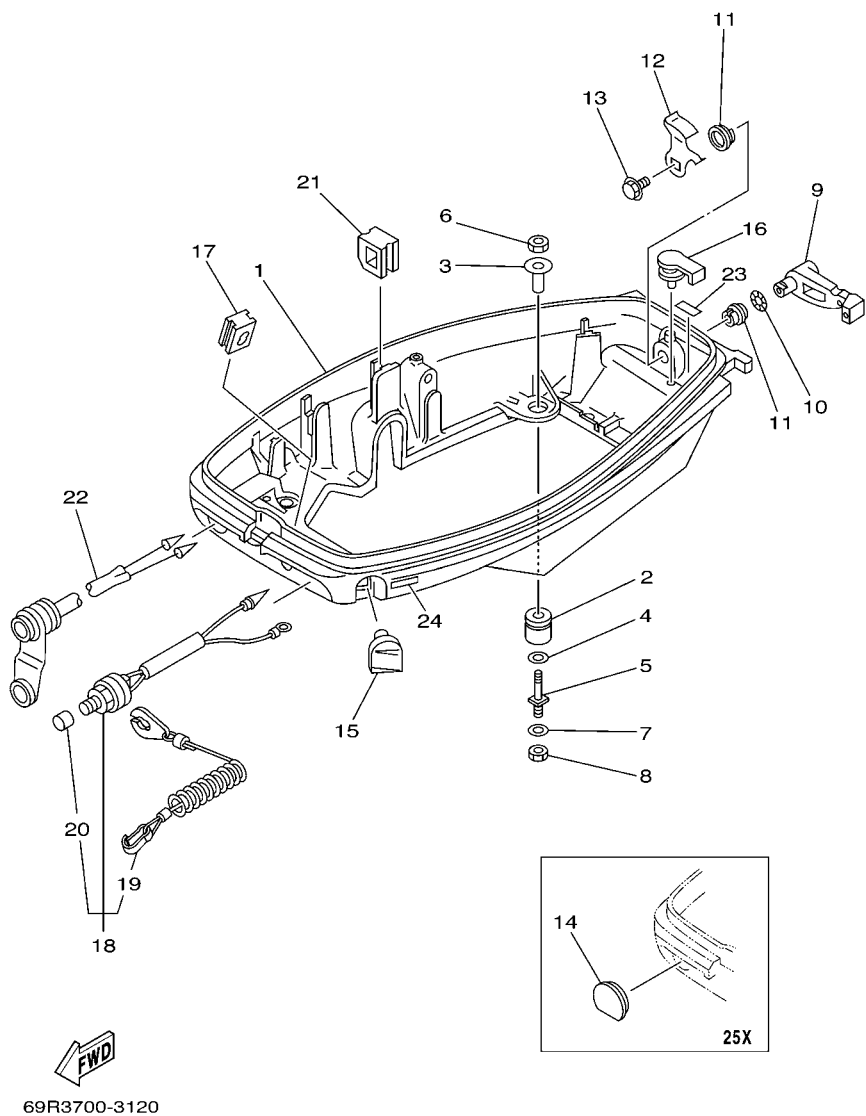


69R3664-3120

FIG. 11 STARTING MOTOR

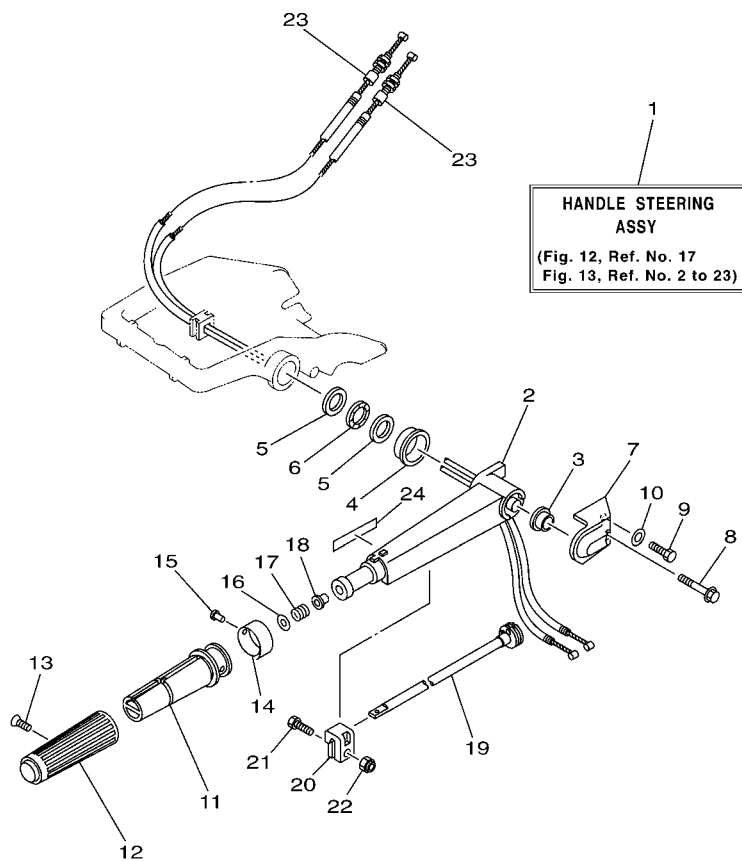
REF. NO.	PART NO.	DESCRIPTION	MH	W	REMARKS
1	689-81800-13	STARTING MOTOR ASSY		1	
2	689-81857-11	.PINION STOPPER SET		1	
3	689-81807-12	.GEAR ASSY, STARTING MOTOR		1	
4	689-81830-11	.FRONT BRACKET ASSY		1	
5	689-81831-00	..METAL, FRONT		1	
6	689-81847-11	.O-RING		2	
7	689-81809-11	.WASHER KIT		1	
8	689-81850-12	.ARMATURE ASSY		1	
9	689-81810-11	.STATOR ASSY		1	
10	689-81840-11	.BRUSH HOLDER ASSY		1	
11	689-81812-11	..BRUSH 2		1	
12	689-81811-11	..BRUSH 1		1	
13	689-81813-10	..SPRING, BRUSH		2	
14	689-81820-11	.REAR BRACKET ASSY		1	
15	689-81826-10	.BOLT		2	
16	97013-08030	BOLT		2	
17	92903-08600	WASHER, PLATE		2	
18	97013-08012	BOLT		1	
19	92903-08600	WASHER, PLATE		1	

FIG. 12 BOTTOM COWLING



REF. NO.	PART NO.	DESCRIPTION	MH	W	REMARKS
1	689-42711-04-4D	COWLING, BOTTOM	1	1	
2	90480-15M06	GROMMET	4	4	
3	90387-08M25	COLLAR	4	4	
4	90201-08M87	WASHER, PLATE	4	4	
5	6G0-42796-00	BOLT 1	4	4	
6	95380-08700	NUT	4	4	
7	92995-08600	WASHER	4	4	
8	95380-08700	NUT	4	4	
9	689-42815-00	LEVER, CLAMP	1	1	
10	90206-12052	WASHER, WAVE	1	1	
11	90386-12069	BUSH	2	2	
12	689-42816-00	LEVER, CLAMP	1	1	
13	90119-06M73	BOLT, WITH WASHER	1	1	
14	682-42724-00	GROMMET	1		25X
15	689-42725-01	GROMMET	1	1	
16	647-42523-00	SPACER, FRICTION	1	1	
17	61N-26326-00	GROMMET	1		
	676-42724-40	GROMMET		1	
18	6E9-82575-02	ENGINE STOP SWITCH ASSY	1		
19	682-82556-00	.STOPPER	1		
20	689-8257Y-00	.CAP	1		
21	90480-17M08	GROMMET	1		
22	682-84381-00	2P CONCENT	1		25B,30H
23	6E7-42791-10	MARK 1	1		25B
	6G5-42791-10	MARK 1	1	1	25X,30H
24	6R6-42791-40	MARK 1	1	1	

FIG. 13 STEERING



69R4700-C130

REF. NO.	PART NO.	DESCRIPTION	MH	W		REMARKS
1	69P-W0084-00-4D	HANDLE STEERING ASSY	1			
2	689-42111-01-4D	HANDLE, STEERING	1			
3	90387-13003	COLLAR	1			
4	90387-33001	COLLAR	1			
5	90201-28013	WASHER, PLATE	2			
6	90206-28001	WASHER, WAVE	1			
7	69P-42112-00-4D	HANDLE, STEERING	1			
8	97595-06550	BOLT, WITH WASHER	1			
9	97095-06020	BOLT	1			
10	92995-06600	WASHER	1			
11	664-42119-00	GRIP, STEERING HANDLE	1			
12	6F6-42177-A0	RUBBER, HANDLE	1			
13	90149-05M13	SCREW	1			
14	6G1-42137-10	INDICATOR, THROTTLE	1			
15	90269-02M09	RIVET	1			
16	92903-10600	WASHER, PLATE	1			
17	90501-23215	SPRING, COMPRESSION	1			
18	90386-08032	BUSH	1			
19	689-42138-00	LEVER, THROTTLE	1			
20	656-42126-01	FRICTION, STEERING HANDLE GRIP	1			
21	97095-06020	BOLT	1			
22	90185-06062	NUT, SELF-LOCKING	1			
23	61N-26311-00	CABLE, THROTTLE 1	2			
24	6E0-83627-41	LABEL, CAUTION 7	1			

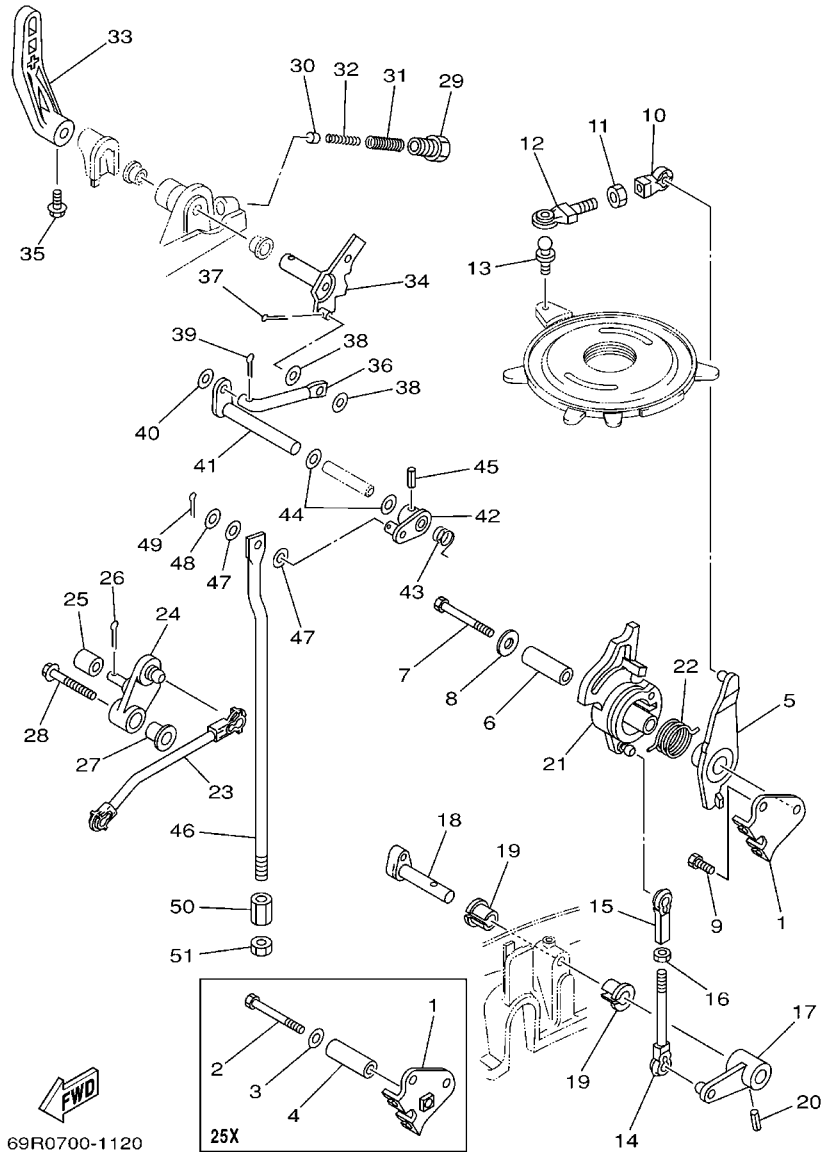


FIG. 14 CONTROL 1

REF. NO.	PART NO.	DESCRIPTION	MH	W	REMARKS
1	69P-14497-00	STAY, THROTTLE WIRE	1	1	25B,30H
	69X-14497-00	STAY, THROTTLE WIRE	1		25X
2	97095-06040	BOLT	1		25X
3	92995-06600	WASHER	1		25X
4	90387-06M59	COLLAR	1		25X
5	69P-41631-00	LEVER, MAGNETO CONTROL	1	1	
6	90387-06M59	COLLAR	1	1	
7	97095-06045	BOLT	1	1	
8	90201-06416	WASHER, PLATE	1	1	
9	97095-06012	BOLT	1	1	
10	662-41237-01	JOINT, LINK	1	1	
11	95380-05700	NUT	1	1	
12	679-41241-01	ROD, LINK	1	1	
13	663-85518-00	JOINT, BALL	1	1	
14	682-41238-01	JOINT, LINK	1	1	
15	682-41237-00	JOINT, LINK	1	1	
16	95380-05600	NUT	1	1	
17	69P-42157-00-94	LEVER, THROTTLE	1	1	
18	656-42153-00-94	SHAFT, THROTTLE CONTROL	1	1	
19	90386-10009	BUSH	2	2	
20	91690-40018	PIN, SPRING	1	1	
21	69P-41213-00	CAM, ACCEL.	1	1	
22	69P-42167-00	SPRING 1	1	1	
23	69P-41241-00	ROD, LINK	1	1	
24	69P-42154-00	LEVER, THROTTLE CONTROL	1	1	
25	62Y-42171-00	BUSHING	1	1	
26	91490-16010	PIN, COTTER	1	1	

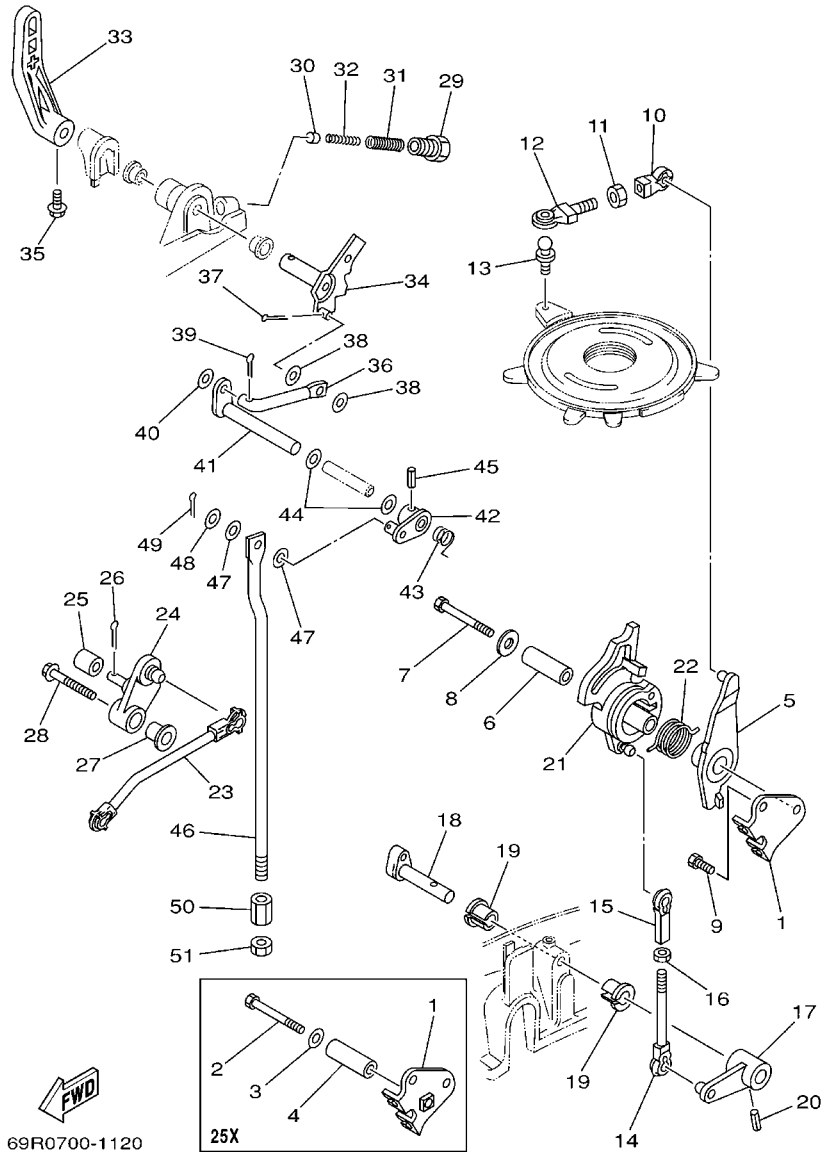
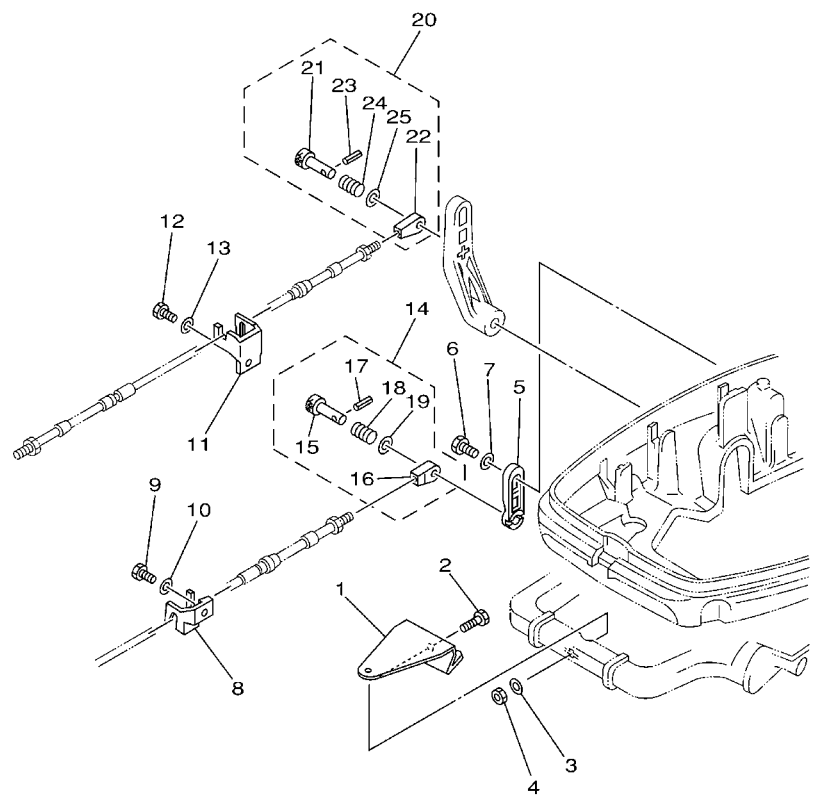


FIG. 14 CONTROL 1

REF. NO.	PART NO.	DESCRIPTION	MH	W		REMARKS
27	90387-06M60	COLLAR	1	1		
28	90119-06M17	BOLT, WITH WASHER	1	1		
29	664-42715-00	BUSHING	1	1		
30	664-44167-01	PLUNGER, SHIFT CAM	1	1		
31	90501-14M07	SPRING, COMPRESSION	1	1		
32	90501-09M08	SPRING, COMPRESSION	1	1		
33	689-44111-01-4D	HANDLE, GEAR SHIFT	1	1		
34	664-44113-01	CAM PLATE, HANDLE	1	1		
35	90105-06M07	BOLT, FLANGE	1	1		
36	664-44142-00	JOINT	1	1		
37	91490-16010	PIN, COTTER	1	1		
38	90202-06007	WASHER, PLATE	2	2		
39	91490-12010	PIN, COTTER	1	1		
40	92990-05600	WASHER, PLATE	1	1		
41	689-44121-01	LEVER, SHIFT ROD	1	1		
42	689-44125-00	LEVER, SHIFT ROD	1	1		
43	90508-14M13	SPRING, TORSION	1	1		
44	90202-10024	WASHER, PLATE	2	2		
45	91690-40016	PIN, SPRING	1	1		
46	61N-44143-00	ROD, SHIFT	1	1		
47	90202-06007	WASHER, PLATE	2	2		
48	92990-05600	WASHER, PLATE	1	1		
49	91490-20010	PIN, COTTER	1	1		
50	61N-44146-00	CONNECTOR, SHIFT ROD	1	1		
51	95380-06600	NUT, HEXAGON	1	1		

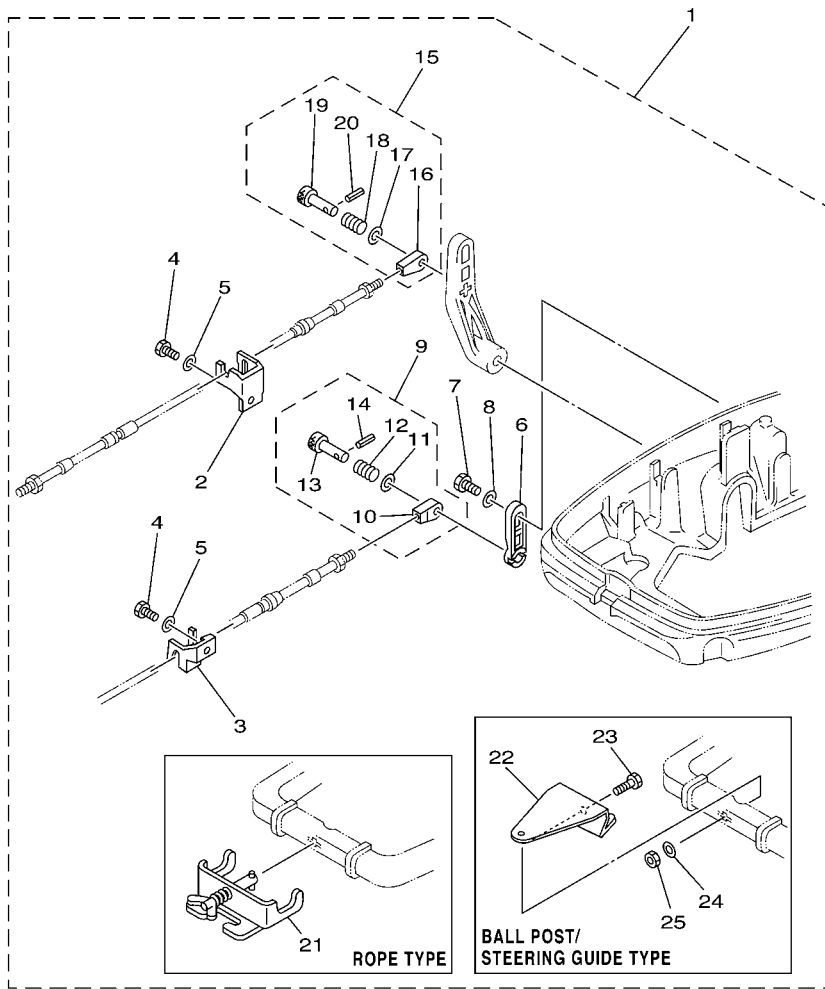
FIG. 15 CONTROL 2



REF. NO.	PART NO.	DESCRIPTION	MH	W	REMARKS
1	689-48511-01	HOOK, STEERING		1	
2	97075-10040	BOLT		1	
3	92990-10600	WASHER, PLATE		1	
4	90185-10051	NUT, SELF-LOCKING		1	
5	648-48534-50-4D	THROTTLE LEVER, CONTROL		1	
6	97095-06012	BOLT		1	
7	92995-06600	WASHER		1	
8	689-48532-50	BRACKET, REMOTE CONTROL 2		1	
9	97095-06016	BOLT		1	
10	92995-06600	WASHER		1	
11	689-48531-50	BRACKET, REMOTE CONTROL 1		1	
12	97095-06016	BOLT		1	
13	92995-06600	WASHER		1	
14	648-48340-50	CABLE END ASSY		1	
15	617-48361-91	.HOOK, CABLE		1	
16	617-48346-90	.CABLE END, REMOTE CONTROL		1	
17	91690-30012	.PIN, SPRING		1	
18	90501-10264	.SPRING, COMPRESSION		1	
19	92990-08600	.WASHER, PLATE		1	
20	648-48330-50	CABLE END ASSY		1	
21	617-48331-91	.HOOK, CABLE		1	
22	648-48346-50	.CABLE END, REMOTE CONTROL		1	
23	91690-30012	.PIN, SPRING		1	
24	90501-10071	.SPRING, COMPRESSION		1	
25	92990-08600	.WASHER, PLATE		1	

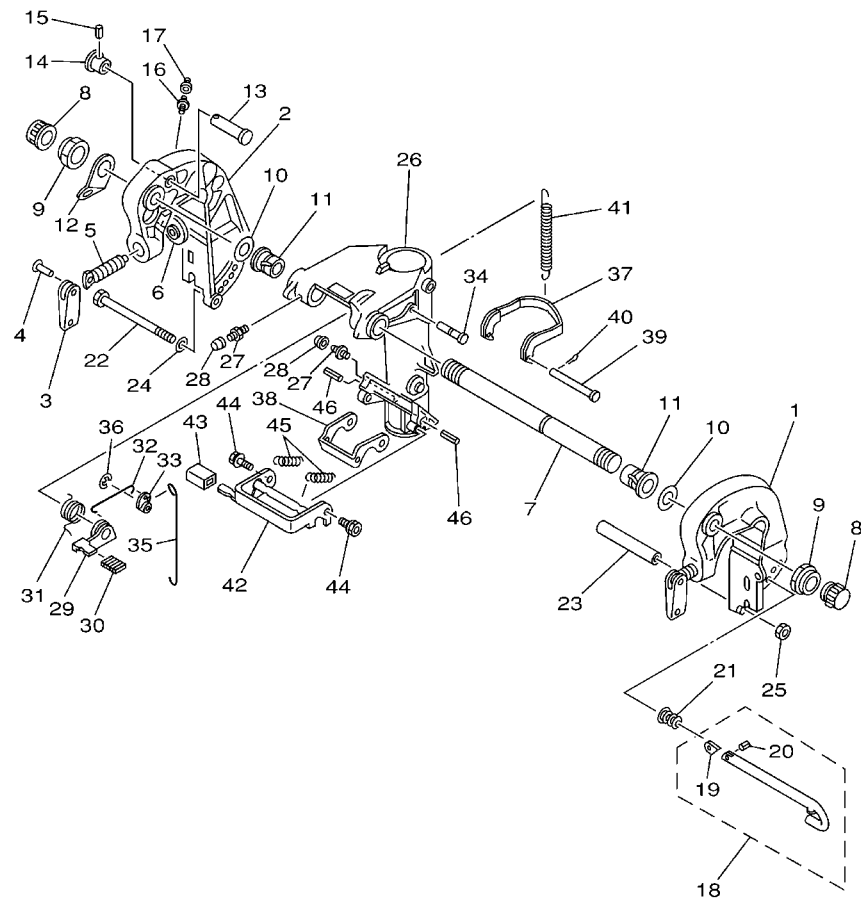

69R0200-1160

FIG. 16 REMO CON ATTACHMENT



69R3664-3170

REF. NO.	PART NO.	DESCRIPTION	MH	W	REMARKS
1	689-48501-01-4D	REMOTE CONT. ATTACHMENT ASSY.	1	1	AP ROPE TYPE
	689-48501-21-4D	REMOTE CONT. ATTACHMENT ASSY.	1	1	AP
2	689-48531-50	.BRACKET, REMOTE CONTROL 1	1	1	
3	689-48532-50	.BRACKET, REMOTE CONTROL 2	1	1	
4	97095-06016	.BOLT	2	2	
5	92995-06600	.WASHER	2	2	
6	648-48534-50-4D	.THROTTLE LEVER, CONTROL	1	1	
7	97095-06012	.BOLT	1	1	
8	92995-06600	.WASHER	1	1	
9	648-48340-50	.CABLE END ASSY	1	1	
10	617-48346-90	..CABLE END, REMOTE CONTROL	1	1	
11	92990-08600	..WASHER, PLATE	1	1	
12	90501-10264	..SPRING, COMPRESSION	1	1	
13	617-48361-91	..HOOK, CABLE	1	1	
14	91690-30012	..PIN, SPRING	1	1	
15	648-48330-50	.CABLE END ASSY	1	1	
16	648-48346-50	..CABLE END, REMOTE CONTROL	1	1	
17	92990-08600	..WASHER, PLATE	1	1	
18	90501-10071	..SPRING, COMPRESSION	1	1	
19	617-48331-91	..HOOK, CABLE	1	1	
20	91690-30012	..PIN, SPRING	1	1	
21	700-48510-12	.STEERING HOOK ASSY	1	1	ROPE TYPE
22	689-48511-01	.HOOK, STEERING	1	1	
23	97075-10040	.BOLT	1	1	
24	92990-10600	.WASHER, PLATE	1	1	
25	90185-10051	.NUT, SELF-LOCKING	1	1	

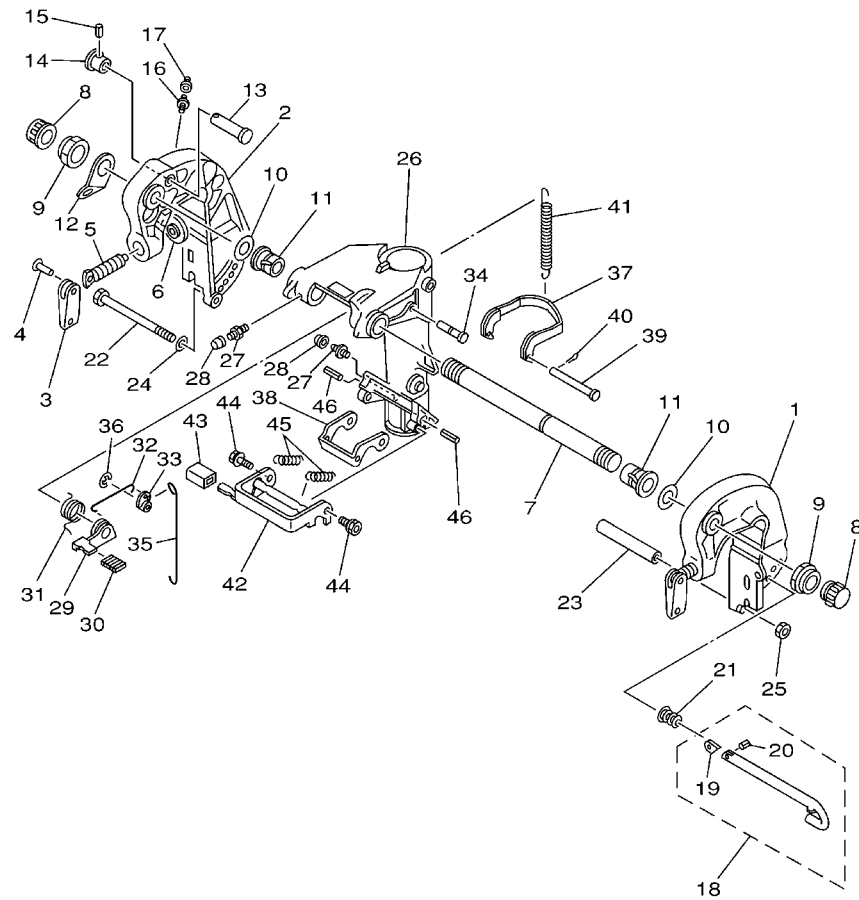


69R0010-1150

FIG. 17 BRACKET 1

REF. NO.	PART NO.	DESCRIPTION	MH	W			REMARKS
1	689-43111-03-4D	BRACKET, CLAMP	1	1			
2	689-43112-02-4D	BRACKET, CLAMP	1	1			
3	6E0-43118-01	HANDLE, TRANSOM CLAMP	2	2			
4	90243-04M01	PIN	2	2			
5	90149-14030	SCREW	2	2			
6	648-43114-01	PAD, TRANSOM CLAMP	2	2			
7	6J8-43131-01	BOLT, CLAMP BRACKET	1	1			
8	6G5-43145-01	CAP, CLAMP BRACKET	2	2			
9	90185-22043	NUT, SELF-LOCKING	2	2			
10	90201-22M03	WASHER, PLATE	2	2			
11	90386-22M67	BUSH	2	2			
12	6J8-43113-01	PLATE, CLAMP BRACKET	1	1			
13	689-43191-00	SHAFT, STOPPER	1	1			
14	689-43192-01	KNOB, STOPPER	1	1			
15	91690-30016	PIN, SPRING	1	1			
16	93700-06M03	NIPPLE, GREASE	1	1			
17	663-45119-00	CAP, GREASE NIPPLE	1	1			AP
18	689-43160-00	TILT ROD ASSY	1	1			
19	689-43165-00	.PLATE, TILT LOCK	1	1			
20	91690-30008	.PIN, SPRING	1	1			
21	90502-10M07	SPRING, CONICAL	1	1			
22	90101-08339	BOLT	1	1			
23	90387-08M03	COLLAR	1	1			
24	92995-08600	WASHER	1	1			
25	95380-08600	NUT	1	1			
26	689-43311-03-4D	BRACKET, SWIVEL 1	1	1			
27	93700-06M03	NIPPLE, GREASE	3	3			

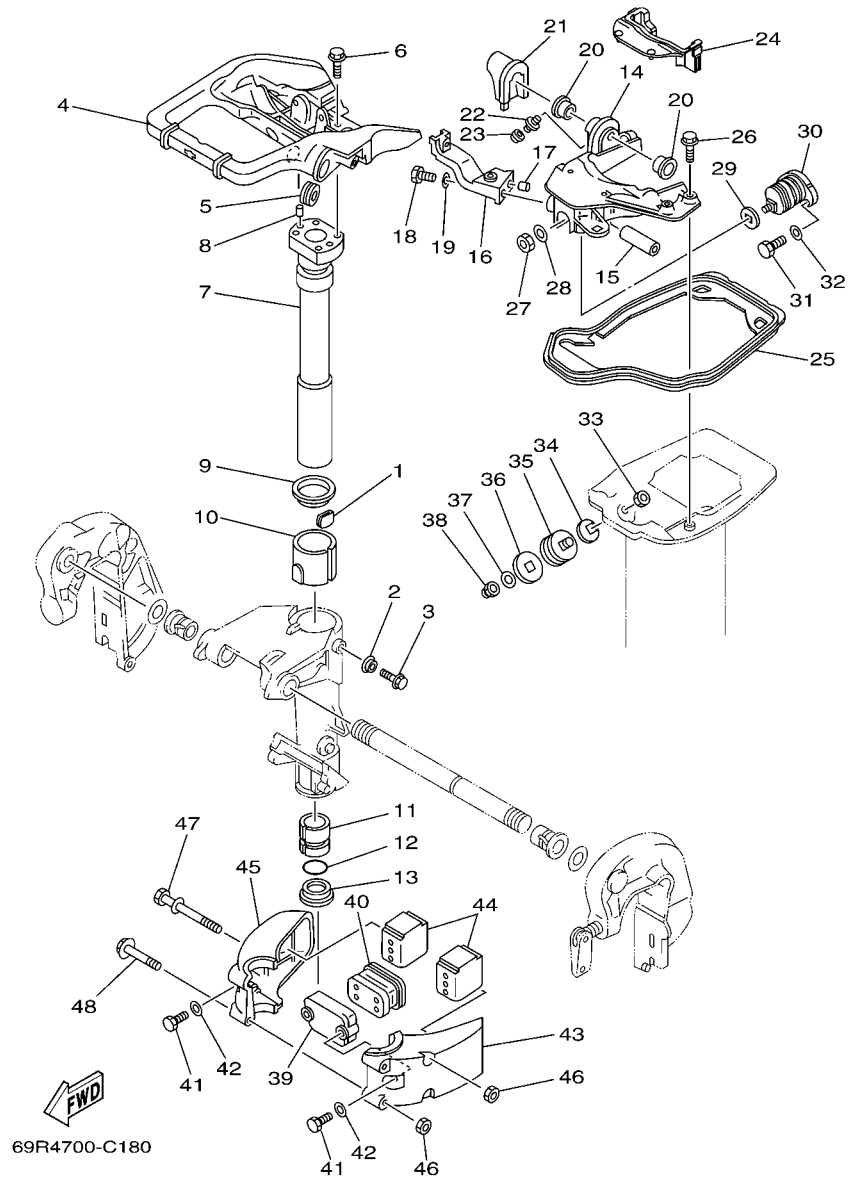
D6



69R0010-1150

FIG. 17 BRACKET 1

REF. NO.	PART NO.	DESCRIPTION	MH	W			REMARKS
28	663-45119-00	CAP, GREASE NIPPLE	3	3			AP
29	689-43631-00	LEVER, TILT	1	1			
30	689-43633-00	COVER, TILT LEVER	1	1			
31	689-43643-00	SPRING	1	1			
32	689-43616-00	ROD, TILT LOCK	1	1			
33	648-43642-00	LEVER, TILT 1	1	1			
34	90249-06M22	PIN	1	1			
35	648-43617-00	ROD, TILT LOCK	1	1			
36	99080-05600	CIRCLIP	1	1			
37	689-43614-01	PLATE, TILT LOCK	1	1			
38	648-43615-00	PLATE, TILT LOCK	1	1			
39	90240-05047	PIN, CLEVIS	1	1			
40	91490-16010	PIN, COTTER	1	1			
41	90506-30M27	SPRING, TENSION	1	1			
42	689-43681-01	LEVER, SHALLOW WATER DRIVE 1	1	1			
43	682-43318-01	COVER	1	1			
44	90109-06M18	BOLT	2	2			
45	90506-16M17	SPRING, TENSION	2	2			
46	91690-40035	PIN, SPRING	2	2			



69R4700-C180

FIG. 18 BRACKET 2

REF. NO.	PART NO.	DESCRIPTION	MH	W	REMARKS
1	648-42528-00	PLATE, FRICTION	1	1	
2	689-43373-01	SEAL, DAMPER	1	1	
3	90105-06M18	BOLT, FLANGE	1	1	
4	69P-42511-00-4D	BRACKET, STEERING	1	1	
5	90480-29045	GROMMET	1	1	
6	90105-06M07	BOLT, FLANGE	4	4	
7	689-42521-00-94	SHAFT, STEERING PIVOT	1	1	
8	93608-12063	PIN, DOWEL	2	2	
9	90209-47016	WASHER	1	1	
10	90386-47M22	BUSH	1	1	
11	90386-38090	BUSH	1	1	
12	93210-37160	O-RING	1	1	
13	90386-38022	BUSH	1	1	
14	69P-44518-00-94	BRACKET COMP.	1	1	
15	90387-10M39	COLLAR	1	1	
16	648-44519-00-94	BRACKET	1	1	
17	93606-12019	PIN, DOWEL	1	1	
18	97095-06018	BOLT	1	1	
19	92995-06600	WASHER	1	1	
20	90381-12M01	BUSH, SOLID	2	2	
21	689-42718-00	RUBBER, SEAL 3	1	1	
22	93700-06M03	NIPPLE, GREASE	1	1	
23	663-45119-00	CAP, GREASE NIPPLE	1	1	AP
24	69P-42717-00	RUBBER, SEAL 2	1	1	
25	69P-42716-00	RUBBER, SEAL 1	1	1	
26	90105-06M08	BOLT, FLANGE	4	4	
27	90170-10M42	NUT	1	1	

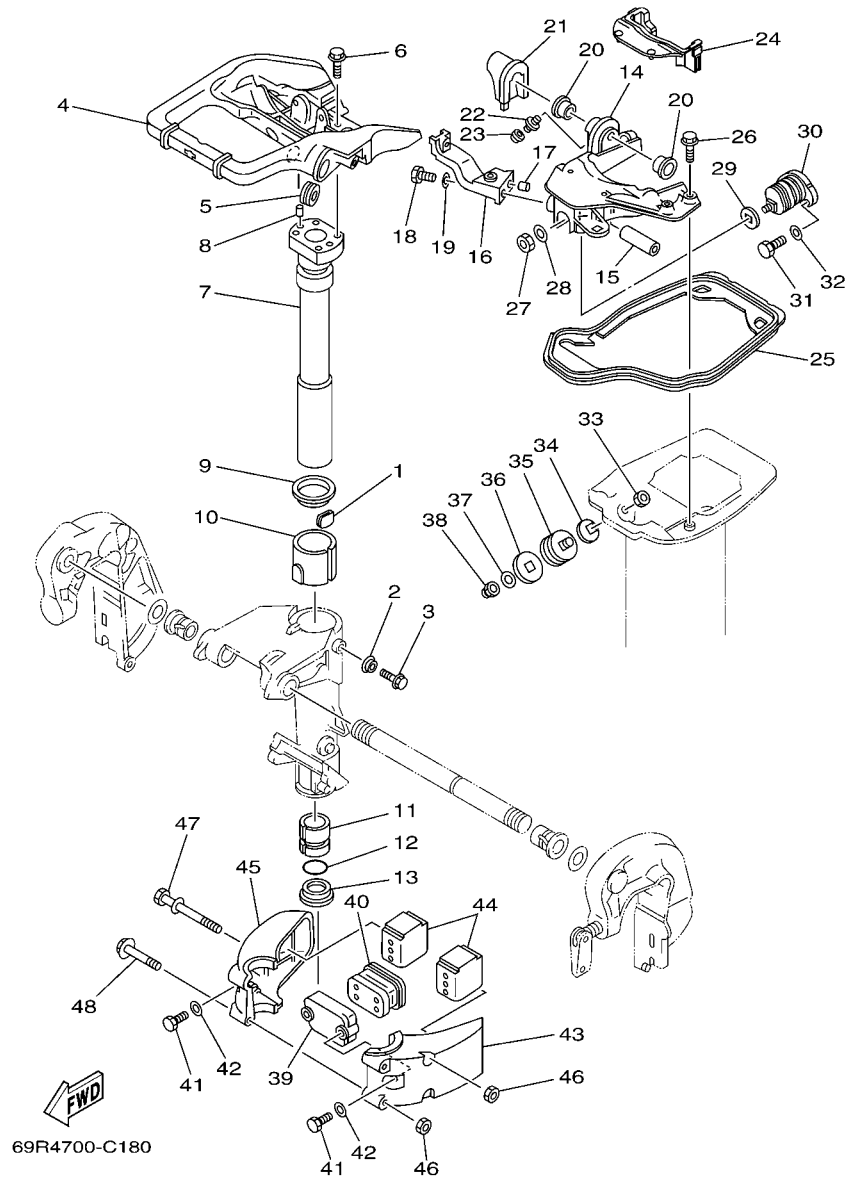
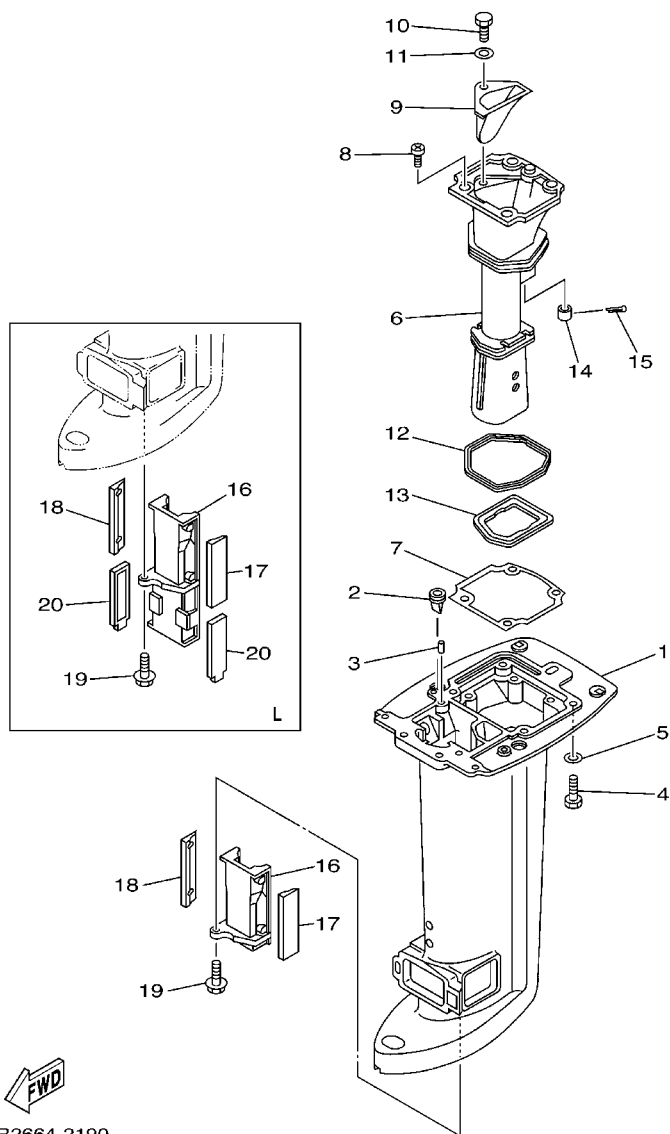


FIG. 18 BRACKET 2

REF. NO.	PART NO.	DESCRIPTION	MH	W			REMARKS
28	92990-10200	WASHER, PLAIN	1	1			
29	648-44591-A0	GASKET	1	1			
30	689-44516-00	MOUNT DAMPER, UPPER FRONT	1	1			
31	97095-06020	BOLT	2	2			
32	92995-06600	WASHER	2	2			
33	90170-10M42	NUT	2	2			
34	648-44591-A0	GASKET	2	2			
35	664-44514-00-94	MOUNT DAMPER, UPPER SIDE	2	2			
36	664-44591-A0	GASKET	2	2			
37	92990-10200	WASHER, PLAIN	2	2			
38	90176-10M01	NUT, CROWN	2	2			
39	689-44553-00-94	COVER, LOWER MOUNT	1	1			
40	689-44557-00	MOUNT DAMPER, LOWER FRONT	1	1			
41	97075-08025	BOLT	2	2			
42	92995-08600	WASHER	2	2			
43	689-44551-01-4D	HOUSING, LOWER MOUNT RUBBER	1	1			
44	689-44555-00	MOUNT DAMPER, LOWER SIDE	2	2			
45	689-44552-01-4D	HOUSING, LOWER MOUNT RUBBER	1	1			
46	95380-08600	NUT	4	4			
47	90119-08M03	BOLT, WITH WASHER	2	2			
48	97595-08565	BOLT, WITH WASHER	2	2			

FIG. 19 UPPER CASING



69R2664-2190

REF. NO.	PART NO.	DESCRIPTION	MH	W		REMARKS
1	69P-45111-00-4D	CASING, UPPER	1			S
	69P-45111-10-4D	CASING, UPPER	1	1		L
2	65W-42717-00	RUBBER, SEAL 2	2	2		
3	93606-12019	PIN, DOWEL	2	2		
4	97075-08030	BOLT	6	6		
5	92995-08600	WASHER	6	6		
6	69P-41131-01-5B	MANIFOLD, EXT. 1	1	1		
7	69P-41134-A0	GASKET, EXHAUST MANIFOLD	1	1		
8	97880-06016	SCREW, PAN HEAD	4	4		
9	69P-41137-00-5B	GUIDE, EXHAUST	1	1		
10	97095-08020	BOLT	1	1		
11	92995-08600	WASHER	1	1		
12	69P-41138-00	SEAL, EXT. 1	1	1		
13	69P-41139-00	SEAL, EXT. 2	1	1		
14	6A8-41135-00	GASKET, EXHAUST MANIFOLD	1	1		
15	91490-30025	PIN, COTTER	1	1		
16	69P-47467-00-5B	PLATE, GUIDE	1			S
	69P-47467-10-5B	PLATE, GUIDE	1	1		L
17	69P-45127-00	SEAL	1	1		
18	69P-45128-00	SEAL 2	1	1		
19	90119-06024	BOLT, WITH WASHER	1	1		
20	69P-45159-00	DAMPER	2	2		L

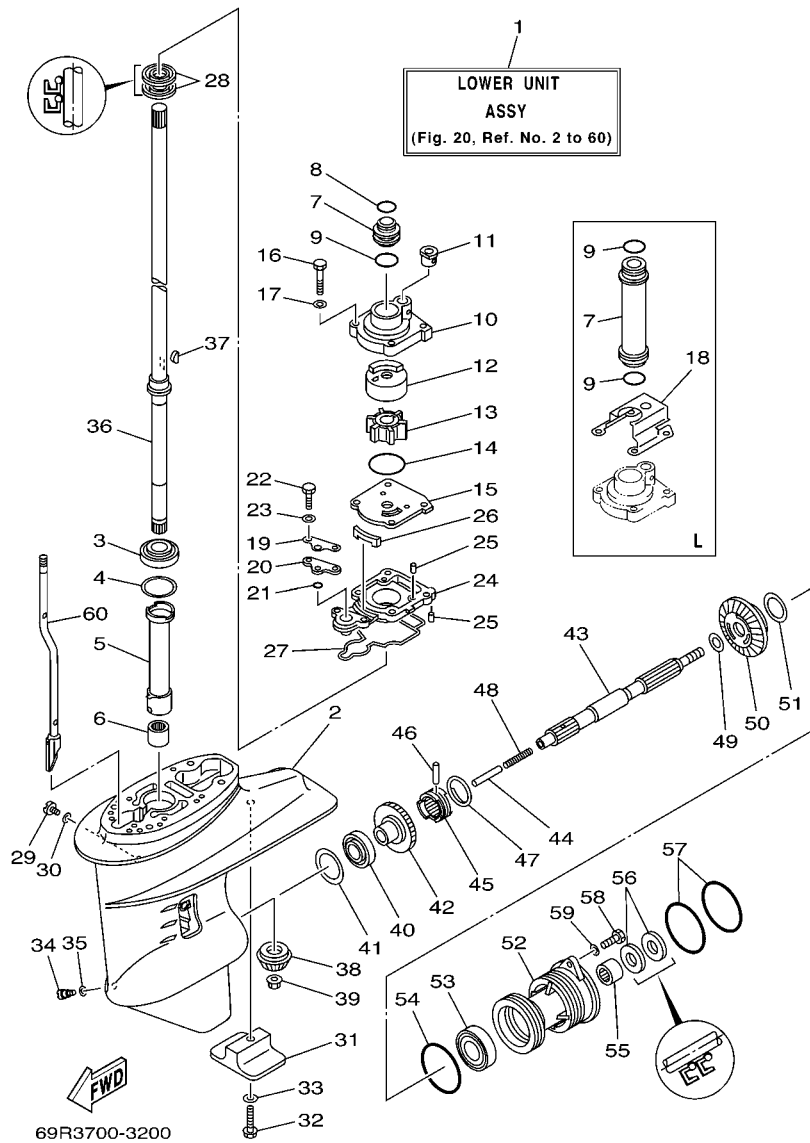


FIG. 20 LOWER CASING & DRIVE 1

REF. NO.	PART NO.	DESCRIPTION	MH	W			REMARKS
1	69P-45300-01-4D	LOWER UNIT ASSY	1				S
	69P-45300-11-4D	LOWER UNIT ASSY	1	1			L
2	61N-45311-02-4D	CASING, LOWER	1	1			
3	93332-000W5	BEARING	1	1			
4	61N-45587-00-07	SHIM (T:0.7MM)	1	1			UR
	61N-45587-00-10	SHIM (T:1.0MM)	1	1			UR
	61N-45587-00-11	SHIM (T:1.1MM)	1	1			UR
	61N-45587-00-12	SHIM (T:1.2MM)	1	1			UR
	61N-45587-00-13	SHIM (T:1.3MM)	1	1			UR
	61N-45587-00-14	SHIM (T:1.4MM)	1	1			UR
	61N-45587-00-15	SHIM (T:1.5MM)	1	1			UR
	61N-45587-00-16	SHIM (T:1.6MM)	1	1			UR
5	61N-45536-00	SLEEVE, DRIVE SHAFT	1	1			
6	93315-220V7	BEARING	1	1			
7	61N-44362-00	TUBE, WATER	1				S
	61N-44362-10	TUBE, WATER	1	1			L
8	93210-22164	O-RING	1				S
9	93210-26130	O-RING	1				S
	93210-26130	O-RING	2	2			L
10	69P-44311-00	HOUSING, WATER PUMP	1	1			
11	6L2-44367-00	DAMPER, WATER SEAL	1	1			
12	69P-44322-00	INSERT, CARTRIDGE	1	1			
13	6H4-44352-02	IMPELLER	1	1			
14	93210-45161	O-RING	1	1			
15	61N-44323-00	OUTER PLATE, CARTRIDGE	1	1			
16	97095-06040	BOLT	4	4			
17	92995-06600	WASHER	4	4			

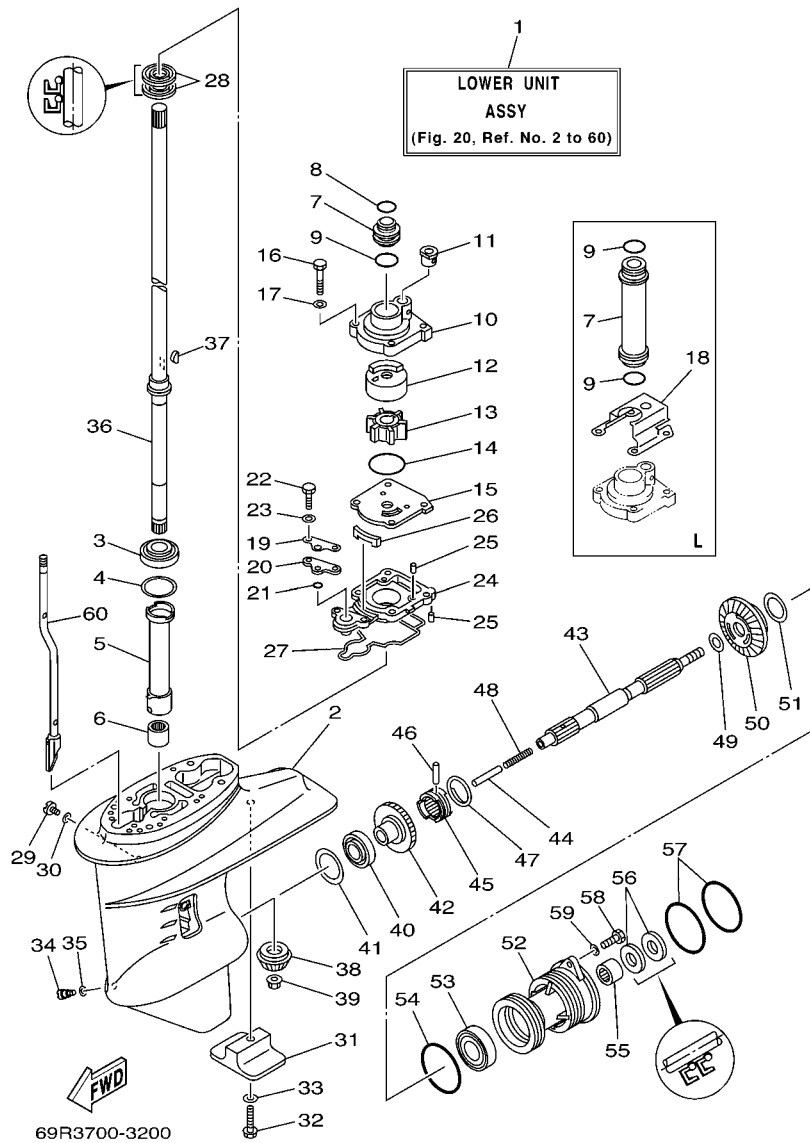


FIG. 20 LOWER CASING & DRIVE 1

REF. NO.	PART NO.	DESCRIPTION	MH	W		REMARKS
18	65W-44328-11	PLATE	1	1		L
19	61N-44176-00	BRACKET	1	1		
20	61N-45321-00	PLATE	1	1		
21	93210-06ME6	O-RING	1	1		
22	97095-06025	BOLT	2	2		
23	92995-06600	WASHER	2	2		
24	61N-45331-00-5B	HOUSING, BEARING	1	1		
25	93604-10M03	PIN, DOWEL	3	3		
26	61N-45127-00	SEAL	1	1		
27	61N-45315-00	PACKING, LOWER CASING	1	1		
28	93101-22067	OIL SEAL	2	2		
29	90340-08002	PLUG, STRAIGHT SCREW	1	1		
30	90430-08020	GASKET	1	1		
31	61N-45251-01	ANODE	1	1		
32	95895-06035	BOLT, FLANGE	1	1		
33	92990-06300	WASHER, INTERNAL TOOTH	1	1		
34	688-45341-10	PLUG, DRAIN	1	1		
35	90430-08020	GASKET	1	1		
36	61N-45510-00	DRIVE SHAFT ASSY	1			S
	61N-45510-10	DRIVE SHAFT ASSY	1	1		L
37	90280-03M03	KEY, WOODRUFF	1	1		
38	61N-45551-00	PINION	1	1		
39	90179-10M14	NUT	1	1		
40	93332-00005	BEARING	1	1		
41	6L2-45567-00-10	SHIM (T:1.0MM)	1	1		UR
	6L2-45567-00-11	SHIM (T:1.1MM)	1	1		UR
	6L2-45567-00-12	SHIM (T:1.2MM)	1	1		UR

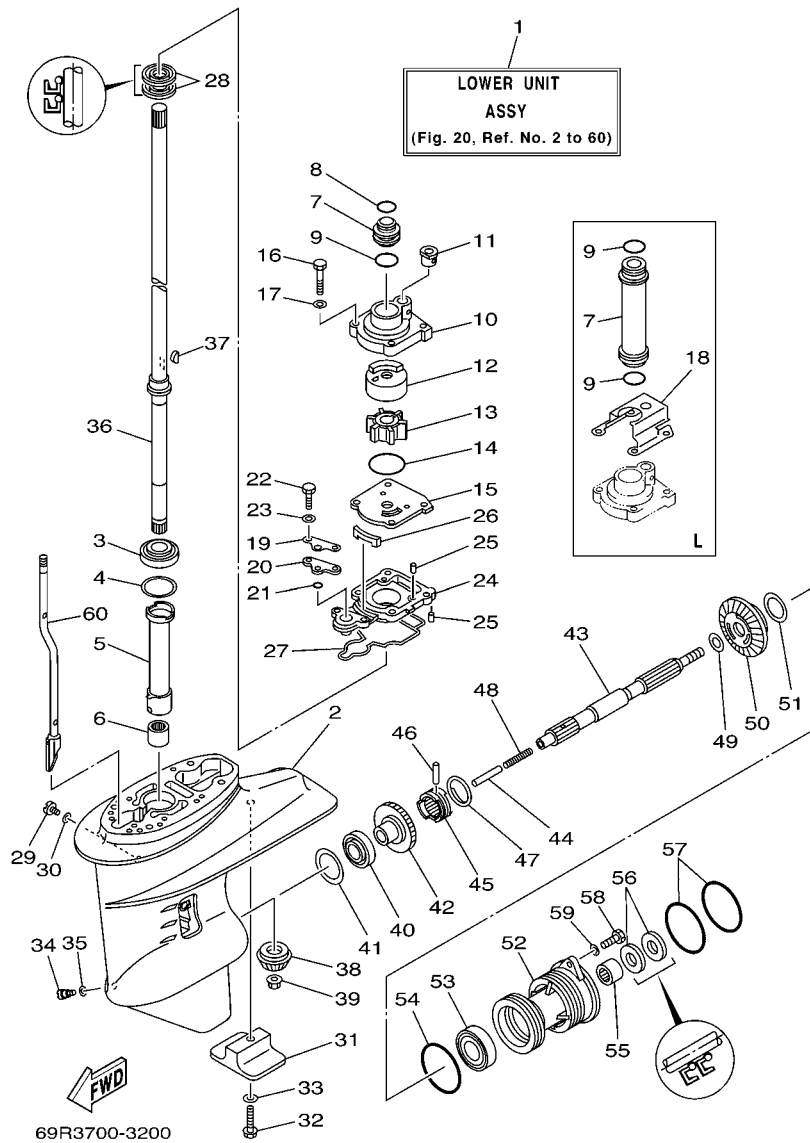
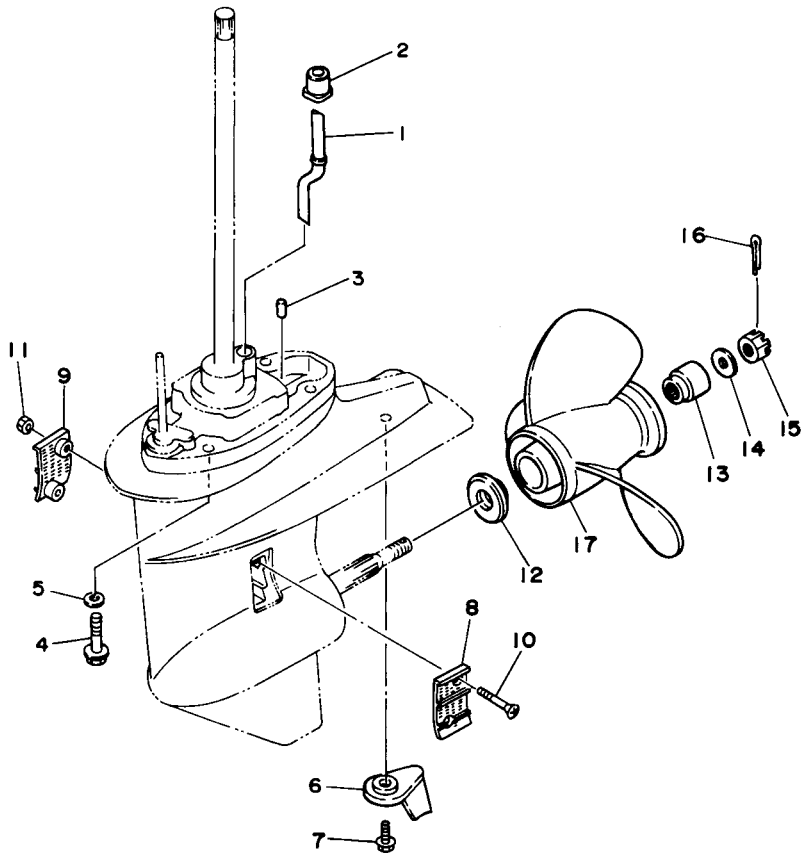


FIG. 20 LOWER CASING & DRIVE 1

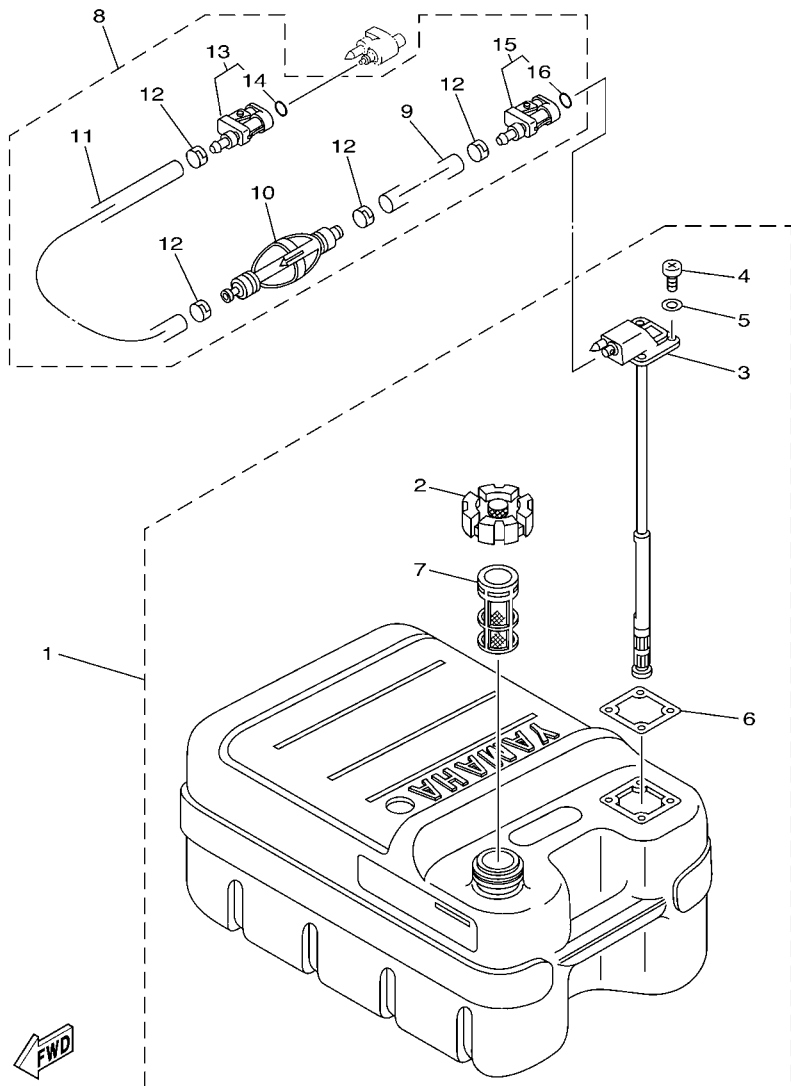
REF. NO.	PART NO.	DESCRIPTION	MH	W		REMARKS
41	6L2-45567-00-13	SHIM (T:1.3MM)	1	1		UR
	6L2-45567-00-14	SHIM (T:1.4MM)	1	1		UR
42	61N-45560-10	GEAR	1	1		
43	65W-45611-00	SHAFT, PROPELLER	1	1		
44	648-45635-00	PLUNGER, SHIFT	1	1		
45	664-45631-02	CLUTCH, DOG	1	1		
46	90250-05010	PIN, STRAIGHT	1	1		
47	648-45633-00	RING, CROSS PIN	1	1		
48	90501-10065	SPRING, COMPRESSION	1	1		
49	90201-20417	WASHER, PLATE	1	1		
50	61N-45571-00	GEAR	1	1		
51	6L2-45577-00-10	SHIM (T:1.0MM)	1	1		UR
	6L2-45577-00-11	SHIM (T:1.1MM)	1	1		UR
	6L2-45577-00-12	SHIM (T:1.2MM)	1	1		UR
	6L2-45577-00-13	SHIM (T:1.3MM)	1	1		UR
52	61N-45361-01-4D	CAP, LOWER CASING	1	1		
53	93306-00612	BEARING	1	1		
54	93210-64ME7	O-RING	1	1		
55	93315-22004	BEARING	1	1		
56	93101-20M07	OIL SEAL	2	2		
57	93210-65M50	O-RING	2	2		
58	97075-06020	BOLT	2	2		
59	92995-06600	WASHER	2	2		
60	61N-44150-00	SHIFT CAM ASSY	1			S
	61N-44150-10	SHIFT CAM ASSY	1	1		L



61R0010-4180

FIG. 21 LOWER CASING & DRIVE 2

REF. NO.	PART NO.	DESCRIPTION	MH	W		REMARKS
1	61N-44361-00	TUBE, WATER	1			S
	61N-44361-10	TUBE, WATER	1	1		L
2	689-44366-00	DAMPER, WATER SEAL	1	1		
3	93606-11M24	PIN, DOWEL	2	2		
4	90105-10M12	BOLT, FLANGE	4	4		
5	92995-10600	WASHER	4	4		
6	61N-45371-00	TAB-TRIM	1	1		
7	90119-06M48	BOLT, WITH WASHER	1	1		
8	6L2-45214-00	COVER, WATER INLET	1	1		
9	6L2-45215-00	COVER, WATER INLET	1	1		
10	90151-05M05	SCREW, COUNTERSUNK	2	2		
11	90185-05002	NUT, SELF-LOCKING	2	2		
12	6L2-45987-01	SPACER	1	1		
13	689-45997-00	SPACER	1	1		
14	92990-14200	WASHER, PLAIN	1	1		
15	90171-14013	NUT, CASTLE	1	1		
16	91490-30022	PIN, COTTER	1	1		
17	664-45941-01-EL	PROPELLER (3X9-7/8"X9"-F)	1	1		UR
	664-45943-01-EL	PROPELLER (3X9-7/8"X8"-F)	1	1		UR
	664-45945-00-EL	PROPELLER (3X9-7/8"X10-1/2"-F)	1	1		UR
	664-45947-01-EL	PROPELLER (3X9-7/8"X11-1/4"-F)	1	1		UR
	664-45949-02-EL	PROPELLER (3X9-7/8"X13"-F)	1	1		UR
	664-45952-00-EL	PROPELLER (3X9-7/8"X14"-F)	1	1		UR
	664-45954-01-EL	PROPELLER (3X9-7/8"X12"-F)	1	1		UR
	62C-45941-00-EL	PROPELLER (3X9-7/8"X10"-F)	1	1		UR

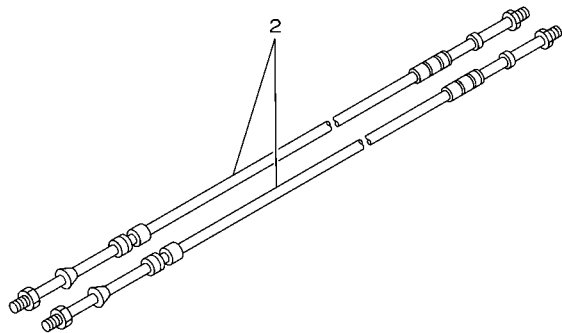
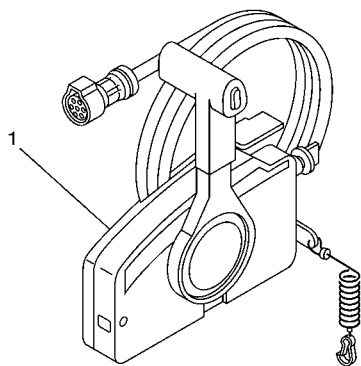


68U3100-C240

FIG. 22 FUEL TANK

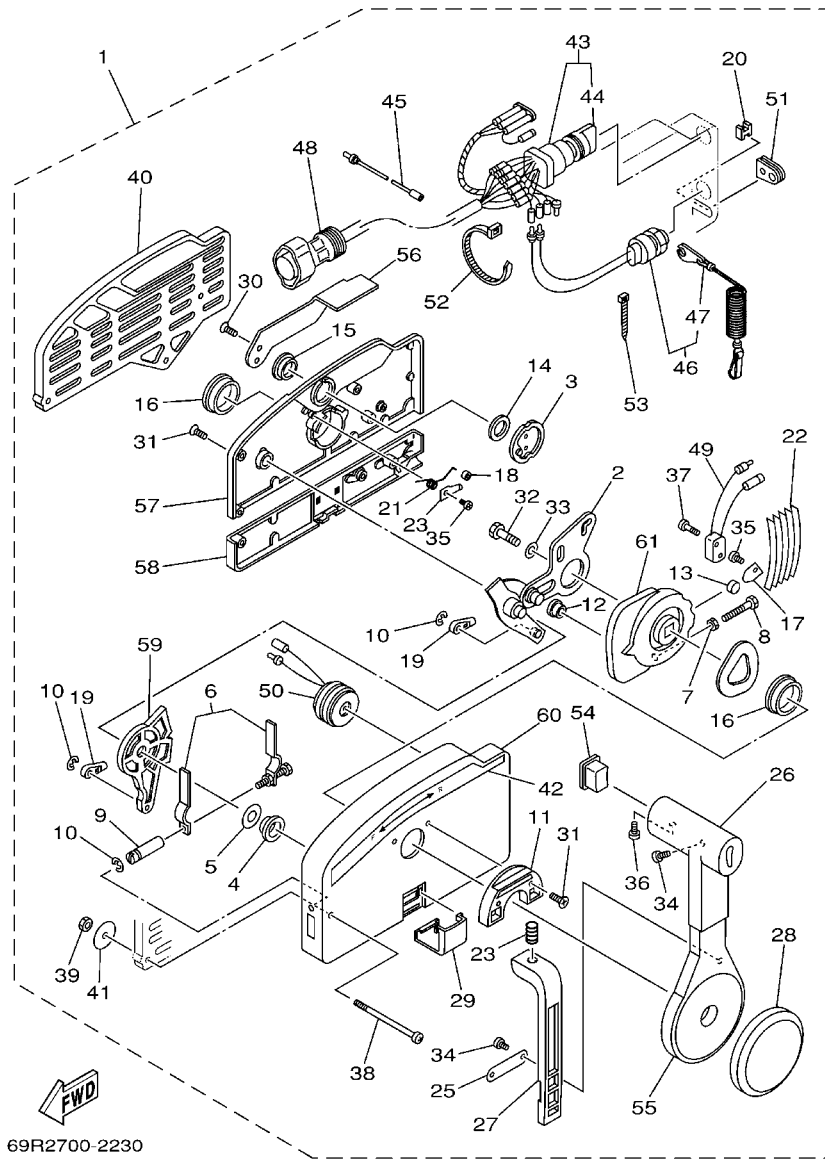
REF. NO.	PART NO.	DESCRIPTION	MH	W	REMARKS
1	6YJ-24201-10	FUEL TANK ASSY (24L)	1	1	AP
2	6YJ-24610-00	.CAP ASSY	1	1	
3	6Y1-24260-12	.FUEL METER ASSY	1	1	WITH INDICATOR
4	98586-05016	.SCREW, PAN HEAD	4	4	
5	6Y1-24329-00	.SEAL	4	4	
6	6Y1-24268-00	.GASKET, FUEL METER	1	1	
7	6YJ-24167-00	.STRAINER	1	1	
8	61J-24306-03	FUEL PIPE COMP. 1	1	1	AP
9	90445-11M06	.HOSE (L2050)	1	1	
10	61J-24360-00	.PRIMER PUMP ASSY	1	1	
11	90445-11M05	.HOSE (L850)	1	1	
12	650-24351-01	.BAND 1	4	4	
13	6G1-24305-04	.FUEL PIPE JOINT COMP. 2	1	1	
14	93210-08287	..O-RING	1	1	
15	6Y1-24305-05	.FUEL PIPE JOINT COMP. 2	1	1	
16	93210-08287	..O-RING	1	1	

FIG. 24 REMOTE CONTROL BOX



67M0100-8280

REF. NO.	PART NO.	DESCRIPTION	MH	W		REMARKS
1	703-48230-15	REMOTE CONTROL ASSY		1		AP
2	701-48320-20	CABLE, REMOTE CONTROL L=13F		2		UR
	701-48320-50	CABLE, REMOTE CONTROL L=15F		2		UR



69R2700-2230

FIG. 25 REMOTE CONTROL ASSY

REF. NO.	PART NO.	DESCRIPTION	MH	W	REMARKS
1	703-48230-15	REMOTE CONTROL ASSY		1	AP
2	703-48261-11	.ARM, THROTTLE		1	
3	703-48153-00	.SHAFT, FREE ACCEL.		1	
4	703-48235-00	.BUSHING		1	
5	703-48268-00	.SPACER		1	
6	703-48264-00	.THROTTLE, FRICTION		1	
7	95380-05600	.NUT		1	
8	97380-05025	.BOLT		1	
9	703-48265-00	.SHAFT, FRICTION		1	
10	93430-06024	.CIRCLIP		3	
11	703-48245-00	.PLATE, LOCK		1	
12	703-48252-00	.ROLLER, CAM		1	
13	701-48248-00	.ROLLER, FREE ACCEL.		1	
14	703-48198-00	.WASHER, WAVE		1	
15	703-48243-00	.BUSHING		1	
16	703-48236-00	.BUSHING 1		2	
17	703-48189-00	.RETAINER		1	
18	703-48234-00	.ROLLER, DETENT		1	
19	703-48345-01	.CABLE END, REMOTE CONTROL 2		2	
20	703-48358-00	.ANCHOR, CABLE		1	
21	703-48244-00	.SPRING, FREE ACCEL.		1	
22	703-48238-00	.SPRING, DETENT		5	
23	703-48246-00	.SPACER		1	
24	703-48227-00	.SPRING, NEUTRAL LOCK		1	
25	703-48226-00	.PLATE, STOPPER		1	
26	703-48222-00	.GRIP, CONTROL LEVER		1	SINGLE
27	703-48223-00	.LOCK, NEUTRAL		1	

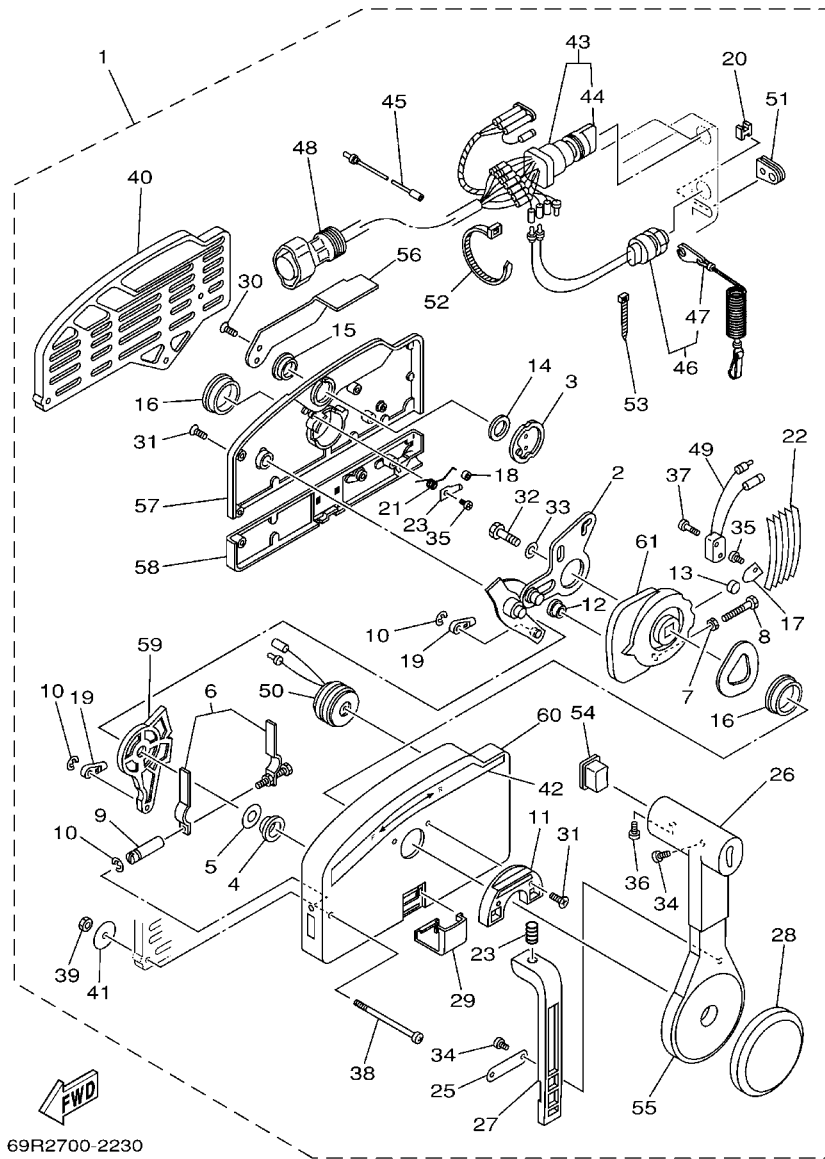
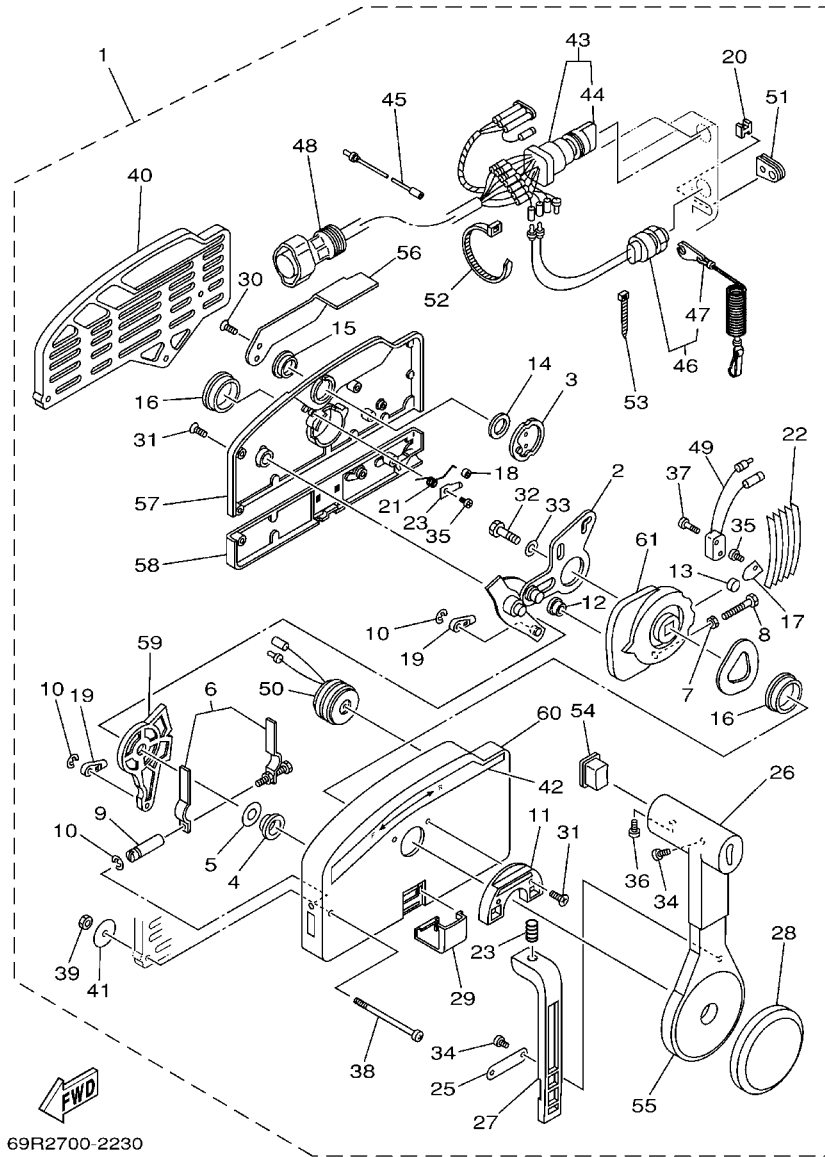


FIG. 25 REMOTE CONTROL ASSY

REF. NO.	PART NO.	DESCRIPTION	MH	W	REMARKS
28	703-48225-00	.COVER		1	
29	703-48219-00	.COVER, LEAD		1	
30	703-48281-00	.SCREW		2	
31	703-48282-00	.SCREW		7	
32	97380-08030	.BOLT		1	
33	92990-08600	.WASHER, PLATE		1	
34	98580-04010	.SCREW, PAN HEAD		3	
35	98580-04006	.SCREW, PAN HEAD		2	
36	98580-05010	.SCREW, PAN HEAD		1	
37	98580-03015	.SCREW, PAN HEAD		2	
38	703-48291-10	.SCREW (M6)		3	
39	95380-06600	.NUT, HEXAGON		3	
40	703-48293-10	.SPACER, REMOTE CONTROL		1	SINGLE
41	701-48287-00	.WASHER		3	
42	703-48215-00	.GRAPHIC		1	
43	703-82510-33	.MAIN SWITCH ASSY		1	
44	703-82577-00	..CAP, KEY		1	
45	703-82531-00	.WIRE, LEAD		1	
46	688-82575-01	.ENGINE STOP SWITCH ASSY		1	
47	682-82556-00	..STOPPER		1	
48	688-82586-21	.EXTENSION, WIRE HARNESS		1	L:5M (7P)
49	703-82540-00	.NEUTRAL SWITCH ASSY		1	
50	703-83383-02	.BUZZER		1	
51	703-48284-00	.GROMMET		1	
52	703-82591-00	.BAND		1	
53	703-82592-00	.BAND		1	
54	703-48224-00	.COVER, CONTROL LEVER		1	WITHOUT PT/T SW.

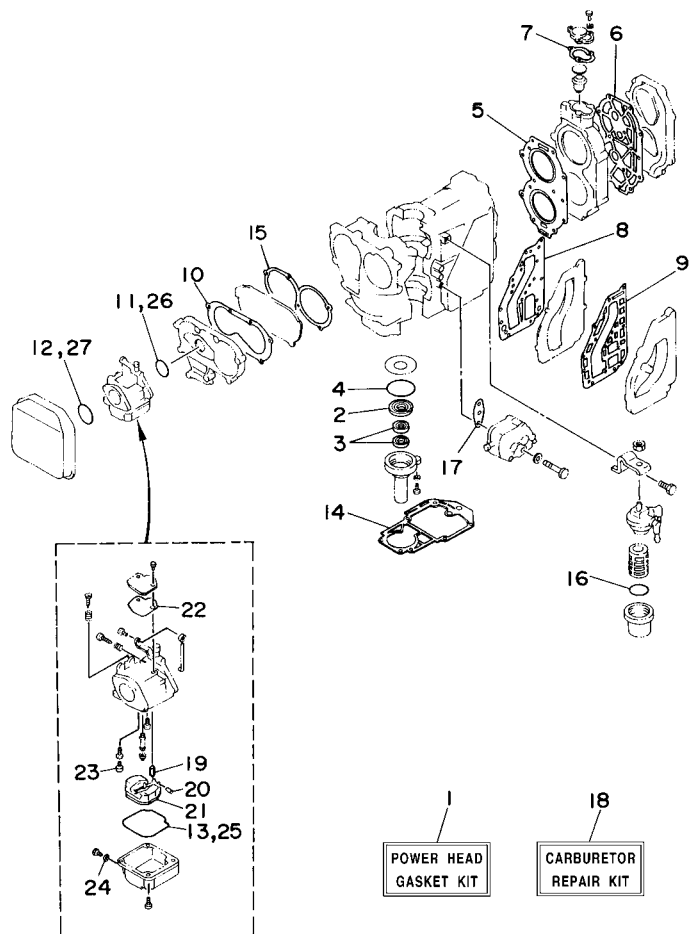


69R2700-2230

FIG. 25 REMOTE CONTROL ASSY

REF. NO.	PART NO.	DESCRIPTION	MH	W	REMARKS
55	703-48221-00	.LEVER, CONTROL		1	
56	703-48152-00	.KNOB, FREE ACCEL.		1	
57	703-48212-00	.BACK PLATE 1		1	
58	703-48213-00	.BACK PLATE 2		1	
59	703-48271-00	.ARM, SHIFT		1	
60	703-48211-01	.HOUSING,1		1	
61	703-48232-00	.GEAR		1	

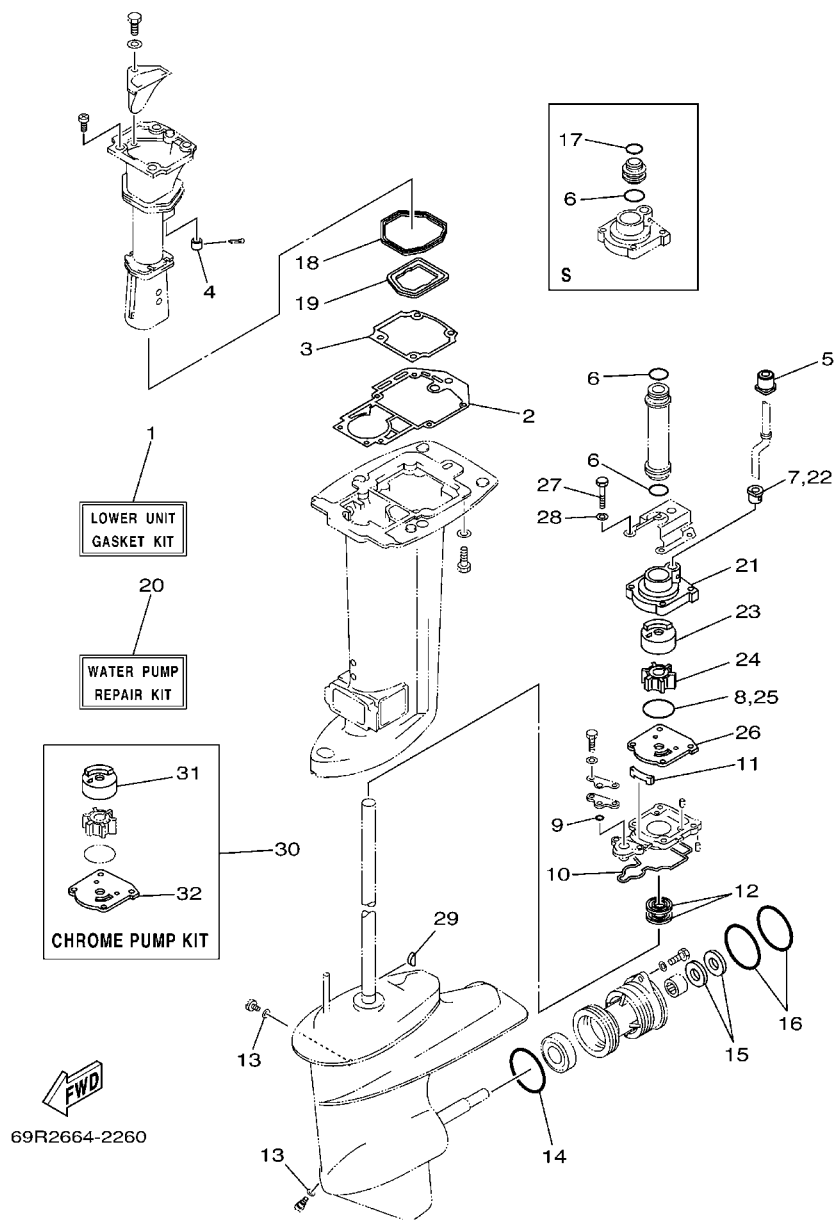
FIG. 26 REPAIR KIT 1



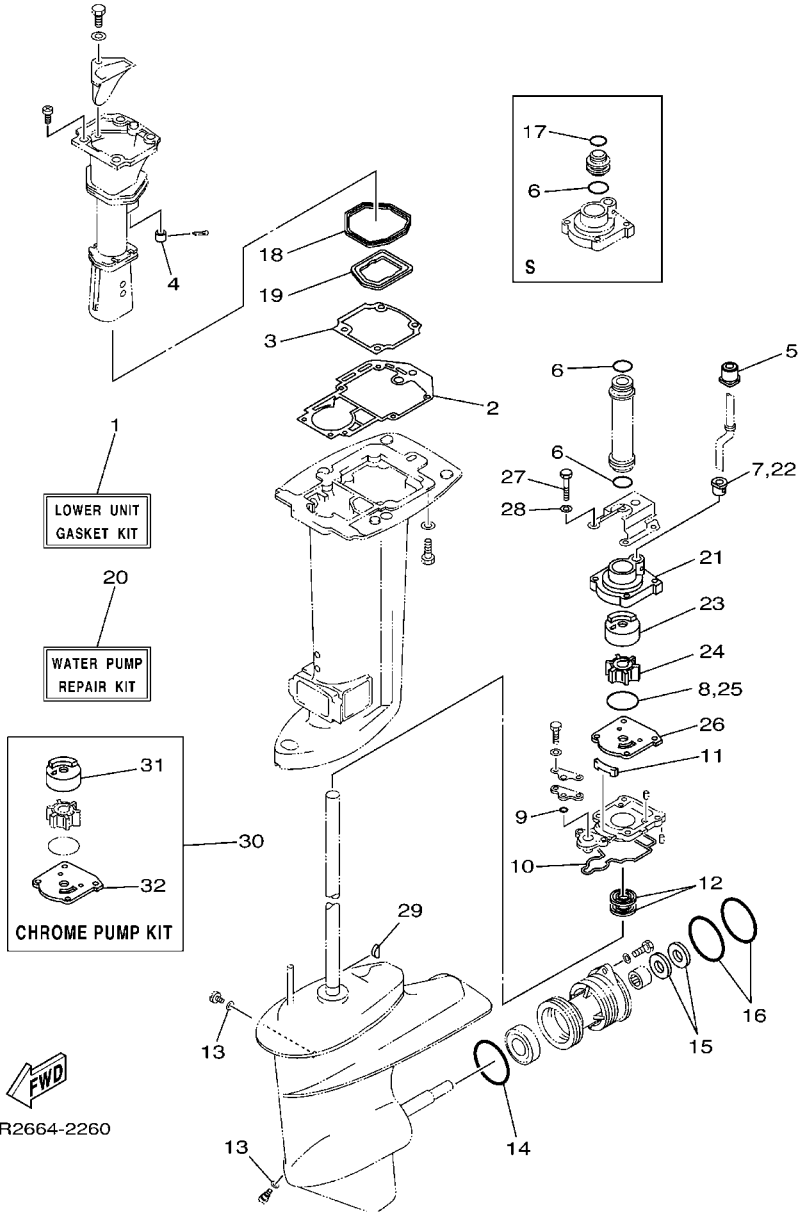
REF. NO.	PART NO.	DESCRIPTION	MH	W				REMARKS
1	69P-W0001-00	POWER HEAD GASKET KIT	1	1				
2	93102-25008	.OIL SEAL	1	1				
3	93101-16001	.OIL SEAL	2	2				
4	93210-58M21	.O-RING	1	1				
5	61N-11181-A1	.GASKET, CYLINDER HEAD 1	1	1				
6	61T-11193-A1	.GASKET, HEAD COVER 1	1	1				
7	655-12414-A1	.GASKET, COVER	1	1				
8	6K8-41122-A1	.GASKET, EXHAUST INNER COVER	1	1				
9	6K8-41124-A1	.GASKET, EXHAUST OUTER COVER	1	1				
10	648-13645-A0	.GASKET, MANIFOLD 1	1	1				
11	61N-14198-00	.GASKET	1	1				
12	93210-40659	.O-RING	1	1				
13	6L2-14384-00	.GASKET, FLOAT CHAMBER	1	1				
14	689-45113-A1	.GASKET, UPPER CASING	1	1				
15	648-13621-A1	.GASKET, VALVE SEAT	1	1				
16	93210-32738	.O-RING	1	1				
17	650-24431-A0	.GASKET, FUEL PUMP 1	1	1				
18	61N-W0093-00	CARBURETOR REPAIR KIT	1	1				
19	61N-14392-00	.VALVE, NEEDLE	1	1				
20	6E5-14386-01	.PIN, FLOAT	1	1				
21	6L2-14385-00	.FLOAT	1	1				
22	6L2-14399-00	.GASKET	1	1				
23	50M-14355-00	.PLUG	1	1				
24	6L2-14398-00	.GASKET	1	1				
25	6L2-14384-00	.GASKET, FLOAT CHAMBER	1	1				
26	61N-14198-00	.GASKET	1	1				
27	93210-40659	.O-RING	1	1				

FWD
61R0700-4180

FIG. 27 REPAIR KIT 2



REF. NO.	PART NO.	DESCRIPTION	MH	W	REMARKS
1	69P-W0001-20	LOWER UNIT GASKET KIT	1	1	
2	689-45113-A1	.GASKET, UPPER CASING	1	1	
3	69P-41134-A0	.GASKET, EXHAUST MANIFOLD	1	1	
4	6A8-41135-00	.GASKET, EXHAUST MANIFOLD	1	1	
5	689-44366-00	.DAMPER, WATER SEAL	1	1	
6	93210-26130	.O-RING	3	3	UN
7	6L2-44367-00	.DAMPER, WATER SEAL	1	1	
8	93210-45161	.O-RING	1	1	
9	93210-06ME6	.O-RING	1	1	
10	61N-45315-00	.PACKING, LOWER CASING	1	1	
11	61N-45127-00	.SEAL	1	1	
12	93101-22067	.OIL SEAL	2	2	
13	90430-08020	.GASKET	2	2	
14	93210-64ME7	.O-RING	1	1	
15	93101-20M07	.OIL SEAL	2	2	
16	93210-65M50	.O-RING	2	2	
17	93210-22164	.O-RING	1	1	S
18	69P-41138-00	.SEAL, EXT. 1	1	1	
19	69P-41139-00	.SEAL, EXT. 2	1	1	
20	69P-W0078-00	WATER PUMP REPAIR KIT	1	1	
21	69P-44311-00	.HOUSING, WATER PUMP	1	1	
22	6L2-44367-00	.DAMPER, WATER SEAL	1	1	
23	69P-44322-00	.INSERT, CARTRIDGE	1	1	
24	6H4-44352-02	.IMPELLER	1	1	
25	93210-45161	.O-RING	1	1	
26	61N-44323-00	.OUTER PLATE, CARTRIDGE	1	1	
27	97095-06040	.BOLT	4	4	



69R2664-2260

FIG. 27 REPAIR KIT 2

REF. NO.	PART NO.	DESCRIPTION	MH	W				REMARKS
28	92995-06600	.WASHER	4	4				
29	90280-03M03	.KEY, WOODRUFF	1	1				
30	69P-W0078-0A	CHROME PUMP KIT	1	1				
31	69P-44322-40	.INSERT, CARTRIDGE	1	1				
32	61N-44323-40	.OUTER PLATE, CARTRIDGE	1	1				
<hr/>								
<hr/>								
<hr/>								
<hr/>								
<hr/>								
<hr/>								
<hr/>								
<hr/>								

NUMERICAL INDEX

PART NO.	REF. NO.	PART NO.	REF. NO.	PART NO.	REF. NO.	PART NO.	REF. NO.	PART NO.	REF. NO.	PART NO.	REF. NO.
61N-11111-01-1S	2 - 19	6A0-14325-00	6 - 26	61T-15772-01-94	7 - 31	69P-41138-00	19 - 12	69S-42677-00	1 - 12	664-44142-00	14 - 36
61T-11111-01-1S	2 - 19	61N-14341-00	5 - 9	69P-15774-00	7 - 39		27 - 18	61R-42678-10	1 - 13	61N-44143-00	14 - 46
61N-11181-A1	2 - 21	61T-14341-00	5 - 9	6F5-15779-02	7 - 17	69P-41139-00	19 - 13	61T-42678-10	1 - 13	61N-44146-00	14 - 50
	26 - 5	6L2-14342-34	5 - 11	6A0-15789-00	7 - 22		27 - 19	61R-42683-F0	1 - 14	61N-44150-00	20 - 60
61N-11191-01-1S	2 - 22	61N-14343-65	5 - 10	6YJ-24167-00	22 - 7	69P-41213-00	14 - 21	689-42711-04-4D	12 - 1	61N-44150-10	20 - 60
61T-11193-A1	2 - 23	50M-14355-00	5 - 12	6YJ-24201-10	22 - 1	682-41237-00	14 - 15	664-42715-00	14 - 29	664-44167-01	14 - 30
	26 - 6		26 - 23	6Y1-24260-12	22 - 3	662-41237-01	14 - 10	69P-42716-00	18 - 25	61N-44176-00	20 - 19
689-11325-00	2 - 17	61N-14381-00	5 - 2	6Y1-24268-00	22 - 6	682-41238-01	14 - 14	65W-42717-00	19 - 2	6E0-44191-11	1 - 15
6J8-11325-00	2 - 12	677-14383-01	5 - 15	6G1-24304-02	6 - 1	69P-41241-00	14 - 23	69P-42717-00	18 - 24	61N-44194-01	9 - 2
6H3-11327-00-1S	2 - 13	6L2-14384-00	5 - 20	6G1-24305-04	22 - 13	679-41241-01	14 - 12	689-42718-00	18 - 21	61T-44194-01	9 - 2
6H3-11328-00	2 - 14		26 - 13	6Y1-24305-05	22 - 15	689-41252-01	4 - 20	682-42724-00	12 - 14	69P-44311-00	20 - 10
676-11372-00	2 - 20	6L2-14385-00	5 - 5	61J-24306-03	22 - 8	61N-41256-00	4 - 21	676-42724-40	12 - 17		27 - 21
69P-11400-00	3 - 1		26 - 21	689-24311-00	6 - 14	661-41262-02	4 - 22	689-42724-50	10 - 16	69P-44322-00	20 - 12
69P-11412-00	3 - 2	6E5-14386-01	5 - 4	6A1-24311-00	6 - 31	682-41271-00	4 - 17	689-42725-01	12 - 15		27 - 23
61N-11422-00	3 - 3		26 - 20	61N-24329-00	6 - 2	689-41273-00	4 - 18	6E7-42791-10	12 - 23	69P-44322-40	27 - 31
61N-11432-00	3 - 4	61N-14392-00	5 - 3	6Y1-24329-00	22 - 5	6J8-41274-00	4 - 19	6G5-42791-10	12 - 23	61N-44323-00	20 - 15
61N-11442-00	3 - 5		26 - 19	650-24351-01	22 - 12	676-41611-00	8 - 17	6R6-42791-40	12 - 24		27 - 26
61N-11515-00	3 - 10	6L2-14398-00	5 - 16	61J-24360-00	22 - 10	689-41612-01	8 - 21	6G0-42796-00	12 - 5	61N-44323-40	27 - 32
61N-11603-00	3 - 19		26 - 24	692-24410-00	6 - 16	676-41613-00	8 - 18	689-42815-00	12 - 9	65W-44328-11	20 - 18
61N-11604-00	3 - 19	6L2-14399-00	5 - 8	663-24411-00	6 - 21	61N-41615-00	9 - 1	689-42816-00	12 - 12	6H4-44352-02	20 - 13
61N-11605-00	3 - 19		26 - 22	692-24411-00	6 - 18	69P-41631-00	14 - 5	689-43111-03-4D	17 - 1		27 - 24
61N-11631-00-95	3 - 18	61N-14440-00	4 - 13	6A0-24412-02	6 - 27	689-42111-01-4D	13 - 2	689-43112-02-4D	17 - 2	61N-44361-00	21 - 1
689-11633-00	3 - 20	69P-14497-00	14 - 1	6A0-24413-00	6 - 17	69P-42112-00-4D	13 - 7	6J8-43113-01	17 - 12	61N-44361-10	21 - 1
688-11634-00	3 - 22	69X-14497-00	14 - 1	6A0-24421-01	6 - 25	664-42119-00	13 - 11	648-43114-01	17 - 6	61N-44362-00	20 - 7
61N-11635-00	3 - 18	62Y-14597-00	5 - 23	650-24431-A0	6 - 28	656-42126-01	13 - 20	6E0-43118-01	17 - 3	61N-44362-10	20 - 7
61N-11636-00	3 - 18	69P-15100-00-1S	2 - 2		26 - 17	6G1-42137-10	13 - 14	6J8-43131-01	17 - 7	689-44366-00	21 - 2
689-11651-00	3 - 12	689-15396-01-5B	2 - 6	648-24434-01	6 - 19	689-42138-00	13 - 19	6E5-43145-01	23 - 9		27 - 5
689-11681-01	3 - 13	61N-15711-10	7 - 2	648-24435-02	6 - 22	656-42153-00-94	14 - 18	6G5-43145-01	17 - 8	6L2-44367-00	20 - 11
6E5-12411-01	2 - 26	6F5-15713-01	7 - 5	61N-24521-00	6 - 9	69P-42154-00	14 - 24	689-43160-00	17 - 18		27 - 7
655-12413-01-1S	2 - 28	6G0-15714-01	7 - 3	61N-24560-00	6 - 7	69P-42157-00-94	14 - 17	689-43165-00	17 - 19	664-44514-00-94	18 - 35
655-12414-A1	2 - 29	61N-15715-00	7 - 6	61N-24563-00	6 - 8	69P-42167-00	14 - 22	689-43191-00	17 - 13	689-44516-00	18 - 30
	26 - 7	6F5-15716-01	7 - 8	61N-24566-01	6 - 12	62Y-42171-00	14 - 25	689-43192-01	17 - 14	69P-44518-00-94	18 - 14
61N-13610-00	4 - 1	6F5-15723-01	7 - 34	6YJ-24610-00	22 - 2	6F6-42177-A0	13 - 12	689-43311-03-4D	17 - 26	648-44519-00-94	18 - 16
689-13610-01	4 - 1	6F5-15726-01	7 - 11	61N-26311-00	13 - 23	69P-42511-00-4D	18 - 4	682-43318-01	17 - 43	689-44551-01-4D	18 - 43
648-13621-A1	4 - 3	61N-15734-00	7 - 7	61N-26326-00	12 - 17	689-42521-00-94	18 - 7	689-43373-01	18 - 2	689-44552-01-4D	18 - 45
	26 - 15	6F5-15739-00	7 - 16	61H-2819R-31	6 - 33	647-42523-00	12 - 16	689-43614-01	17 - 37	689-44553-00-94	18 - 39
61N-13641-01-1S	4 - 4	6F5-15741-01	7 - 4	6K8-41121-00-1S	2 - 31	682-42525-00	10 - 19	648-43615-00	17 - 38	689-44555-00	18 - 44
648-13645-A0	4 - 5	69P-15746-00	7 - 41	6K8-41122-A1	2 - 32	648-42528-00	18 - 1	689-43616-00	17 - 32	689-44557-00	18 - 40
	26 - 10	689-15747-70	7 - 42		26 - 8	624-42542-00	9 - 7	648-43617-00	17 - 35	648-44591-A0	18 - 29
6L2-14157-00	5 - 7	656-15748-00	7 - 37	61N-41123-00-1S	2 - 33	69R-42610-20-4D	1 - 1	689-43631-00	17 - 29	664-44591-A0	18 - 36
61N-14198-00	4 - 12	6G0-15754-00	7 - 9	6K8-41124-A1	2 - 36	69R-42610-40-4D	1 - 1	689-43633-00	17 - 30	69P-45111-00-4D	19 - 1
	26 - 11	689-15755-01	7 - 14		26 - 9	69S-42610-40-4D	1 - 1	648-43642-00	17 - 33	69P-45111-10-4D	19 - 1
61N-14212-00	5 - 21	61N-15758-01-4D	7 - 18	69P-41131-01-5B	19 - 6	69P-42613-00-4D	1 - 7	689-43643-00	17 - 31	689-45113-A1	2 - 41
646-14212-01	5 - 18	61N-15762-00	7 - 19	69P-41134-A0	19 - 7	6G0-42615-00	1 - 2	689-43681-01	17 - 42		26 - 14
69P-14301-00	5 - 1	6F5-15764-00	7 - 15		27 - 3	61N-42628-00	1 - 10	689-44111-01-4D	14 - 33		27 - 2
69S-14301-00	5 - 1	61T-15770-00	7 - 36	6A8-41135-00	19 - 14	689-42647-00	1 - 3	664-44113-01	14 - 34	663-45119-00	17 - 17
664-14321-01	5 - 13	6H7-15771-01-94	7 - 29		27 - 4	6G0-42651-02	1 - 5	689-44121-01	14 - 41		18 - 23
61N-14323-00	5 - 19	656-15772-00-94	7 - 31	69P-41137-00-5B	19 - 9	69R-42677-00	1 - 12	689-44125-00	14 - 42	61N-45127-00	20 - 26

NUMERICAL INDEX

PART NO.	REF. NO.	PART NO.	REF. NO.	PART NO.	REF. NO.	PART NO.	REF. NO.	PART NO.	REF. NO.	PART NO.	REF. NO.
61N-45127-00	27 - 11	664-45947-01-EL	21 - 17	701-48320-20	24 - 2	6G1-81941-10	10 - 2	61T-86111-00	10 - 21	90170-10M42	18 - 27
69P-45127-00	19 - 17	664-45949-02-EL	21 - 17	701-48320-50	24 - 2	61T-81945-01	10 - 4	61T-86112-00	10 - 24	90171-14013	21 - 15
69P-45128-00	19 - 18	664-45952-00-EL	21 - 17	648-48330-50	15 - 20	6G1-81952-00	10 - 3	682-86116-00	10 - 22	90176-10M01	18 - 38
69P-45159-00	19 - 20	664-45954-01-EL	21 - 17		16 - 15	664-81970-61	10 - 6	682-86117-00	10 - 23	90179-06M24	1 - 8
6L2-45214-00	21 - 8	6L2-45987-01	21 - 12	617-48331-91	15 - 21	689-82105-13	10 - 15	69P-W0001-00	26 - 1	90179-10M14	20 - 39
6L2-45215-00	21 - 9	689-45997-00	21 - 13		16 - 19	682-82150-10	10 - 11	69P-W0001-20	27 - 1	90179-16M05	8 - 15
61N-45251-01	20 - 31	69P-47467-00-5B	19 - 16	648-48340-50	15 - 14	663-82151-00	10 - 12	689-W0004-00	4 - 2	90185-05002	21 - 11
69P-45300-01-4D	20 - 1	69P-47467-10-5B	19 - 16		16 - 9	61N-82317-00	9 - 6	61R-W0070-10	1 - 11	90185-06062	13 - 22
69P-45300-11-4D	20 - 1	703-48152-00	25 - 56	703-48345-01	25 - 19	6G1-82370-21	9 - 29	69P-W0078-00	27 - 20	90185-09M01	23 - 4
61N-45311-02-4D	20 - 2	703-48153-00	25 - 3	648-48346-50	15 - 22	703-82510-33	25 - 43	69P-W0078-0A	27 - 30	90185-10051	15 - 4
61N-45315-00	20 - 27	703-48189-00	25 - 17		16 - 16	61N-82519-01	9 - 10	69P-W0084-00-4D	13 - 1		16 - 25
	27 - 10	703-48198-00	25 - 14	617-48346-90	15 - 16	703-82531-00	25 - 45	69P-W0090-00-1S	2 - 1	90185-22043	17 - 9
61N-45321-00	20 - 20	703-48211-01	25 - 60		16 - 10	689-82531-02	10 - 5	69S-W0090-00-1S	2 - 1	90201-06416	14 - 8
61N-45331-00-5B	20 - 24	703-48212-00	25 - 57	703-48358-00	25 - 20	703-82540-00	25 - 49	61N-W0093-00	26 - 18	90201-06M30	9 - 9
688-45341-10	20 - 34	703-48213-00	25 - 58	617-48361-91	15 - 15	682-82556-00	12 - 19	61N-W1571-11	7 - 1	90201-08M87	12 - 4
61N-45361-01-4D	20 - 52	703-48215-00	25 - 42		16 - 13		25 - 47	656-W2810-02	6 - 34	90201-10M20	23 - 3
61N-45371-00	21 - 6	703-48219-00	25 - 29	689-48501-01-4D	16 - 1	61T-82560-00	10 - 30	90101-08339	17 - 22	90201-10M63	23 - 8
61N-45510-00	20 - 36	703-48221-00	25 - 55	689-48501-21-4D	16 - 1	688-82575-01	25 - 46	90105-06M07	14 - 35	90201-16M44	8 - 16
61N-45510-10	20 - 36	703-48222-00	25 - 26	700-48510-12	16 - 21	6E9-82575-02	12 - 18		18 - 6	90201-20417	20 - 49
61N-45536-00	20 - 5	703-48223-00	25 - 27	689-48511-01	15 - 1	703-82577-00	25 - 44	90105-06M08	18 - 26	90201-20M27	3 - 23
61N-45551-00	20 - 38	703-48224-00	25 - 54		16 - 22	689-82577-00	12 - 20	90105-06M18	18 - 3	90201-21567	2 - 27
61N-45560-10	20 - 42	703-48225-00	25 - 28	689-48531-50	15 - 11	61T-82580-00	10 - 13	90105-08M10	7 - 35	90201-22M03	17 - 10
6L2-45567-00-10	20 - 41	703-48226-00	25 - 25		16 - 2	688-82586-21	25 - 48	90105-10M12	21 - 4	90201-28013	13 - 5
6L2-45567-00-11	20 - 41	703-48227-00	25 - 24	689-48532-50	15 - 8	61T-82588-00	10 - 31	90109-06M18	17 - 44	90201-50306	2 - 40
6L2-45567-00-12	20 - 41	703-48230-15	24 - 1		16 - 3	61T-82590-00	10 - 14	90119-06024	19 - 19	90202-06007	14 - 38
6L2-45567-00-13	20 - 41		25 - 1	648-48534-50-4D	15 - 5	703-82591-00	25 - 52	90119-06025	7 - 33	90202-10024	14 - 44
6L2-45567-00-14	20 - 41	703-48232-00	25 - 61		16 - 6	703-82592-00	25 - 53	90119-06M17	14 - 28	90206-05005	7 - 45
61N-45571-00	20 - 50	703-48234-00	25 - 18	689-61350-02	23 - 1	689-82594-10	10 - 18	90119-06M23	7 - 43	90206-12052	12 - 10
6L2-45577-00-10	20 - 51	703-48235-00	25 - 4	689-61351-01	23 - 2	703-83383-02	25 - 50	90119-06M48	21 - 7	90206-28001	13 - 6
6L2-45577-00-11	20 - 51	703-48236-00	25 - 16	6E5-61355-00	23 - 7	6A1-83625-41	4 - 25	90119-06M73	12 - 13	90209-24M03	3 - 15
6L2-45577-00-12	20 - 51	703-48238-00	25 - 22	61N-81313-09	8 - 4	6A1-83625-51	4 - 26	90119-06M94	4 - 15	90209-47016	18 - 9
6L2-45577-00-13	20 - 51	703-48243-00	25 - 15	6E9-81328-70	8 - 7	6E0-83627-41	13 - 24	90119-06M95	9 - 8	90240-05047	17 - 39
61N-45587-00-07	20 - 4	703-48244-00	25 - 21	689-81800-13	11 - 1	682-84381-00	12 - 22	90119-06MA0	2 - 39	90243-04M01	17 - 4
61N-45587-00-10	20 - 4	703-48245-00	25 - 11	689-81807-12	11 - 3	6E9-85516-70	8 - 9	90119-06MA2	2 - 24	90249-06M22	17 - 34
61N-45587-00-11	20 - 4	703-48246-00	25 - 23	689-81809-11	11 - 7	663-85518-00	14 - 13	90119-06MA3	2 - 37	90250-05010	20 - 46
61N-45587-00-12	20 - 4	701-48248-00	25 - 13	689-81810-11	11 - 9	61N-85537-00	8 - 13		7 - 30	90266-04M00	1 - 6
61N-45587-00-13	20 - 4	703-48252-00	25 - 12	689-81811-11	11 - 12	69X-85540-00	9 - 13	90119-06MA4	2 - 38	90266-04M01	1 - 4
61N-45587-00-14	20 - 4	703-48261-11	25 - 2	689-81812-11	11 - 11	61N-85540-13	9 - 13		7 - 32	90269-02M09	13 - 15
61N-45587-00-15	20 - 4	703-48264-00	25 - 6	689-81813-10	11 - 13	69P-85541-09	8 - 3	90119-08009	2 - 3	90280-03M03	20 - 37
61N-45587-00-16	20 - 4	703-48265-00	25 - 9	689-81820-11	11 - 14	61N-85542-00-94	9 - 5	90119-08015	2 - 25		27 - 29
65W-45611-00	20 - 43	703-48268-00	25 - 5	689-81826-10	11 - 15	61N-85543-09	8 - 5	90119-08M03	18 - 47	90280-05015	8 - 14
664-45631-02	20 - 45	703-48271-00	25 - 59	689-81830-11	11 - 4	61N-85543-19	8 - 6	90119-08M65	2 - 4	90340-08002	20 - 29
648-45633-00	20 - 47	703-48281-00	25 - 30	689-81831-00	11 - 5	61N-85550-10	8 - 1	90149-05M13	13 - 13	90381-12M01	18 - 20
648-45635-00	20 - 44	703-48282-00	25 - 31	689-81840-11	11 - 10	61T-85550-10	8 - 1	90149-14030	17 - 5	90386-08032	13 - 18
62C-45941-00-EL	21 - 17	703-48284-00	25 - 51	689-81847-11	11 - 6	69P-85560-00	8 - 2	90151-05M05	21 - 10	90386-10009	14 - 19
664-45941-01-EL	21 - 17	701-48287-00	25 - 41	689-81850-12	11 - 8	69P-85561-00	8 - 10	90151-06M02	2 - 18	90386-12069	12 - 11
664-45943-01-EL	21 - 17	703-48291-10	25 - 38	689-81857-11	11 - 2	61N-85570-00	9 - 25	90161-06M00	10 - 20	90386-22M67	17 - 11
664-45945-00-EL	21 - 17	703-48293-10	25 - 40	6H3-81922-00	9 - 18	6H5-85570-00	9 - 20	90170-09M03	23 - 5	90386-38022	18 - 13

NUMERICAL INDEX

PART NO.	REF. NO.	PART NO.	REF. NO.	PART NO.	REF. NO.	PART NO.	REF. NO.	PART NO.	REF. NO.	PART NO.	REF. NO.
90386-38090	18 - 11	91490-20010	14 - 49	93101-20M07	20 - 56	93700-06M03	17 - 16	97095-06040	6 - 29		
90386-47M22	18 - 10	91490-30022	21 - 16		27 - 15		18 - 22		14 - 2		
90387-06013	7 - 44	91490-30025	19 - 15	93101-22067	20 - 28	94702-00247	2 - 42		20 - 16		
90387-06M26	4 - 16	91690-30008	17 - 20		27 - 12	94702-00271	2 - 42		27 - 27		
90387-06M59	14 - 4	91690-30012	15 - 17	93102-25008	2 - 7	95303-08700	7 - 12	97095-06045	14 - 7		
90387-06M60	14 - 27		16 - 14		26 - 2	95380-03600	6 - 20	97095-08020	19 - 10		
90387-08M03	17 - 23	91690-30016	17 - 15	93102-32M07	3 - 7	95380-05600	14 - 16	97380-05025	25 - 8		
90387-08M25	12 - 3	91690-40016	14 - 45	93210-03261	10 - 28		25 - 7	97380-08030	25 - 32		
90387-10M39	18 - 15	91690-40018	14 - 20	93210-06ME6	20 - 21	95380-05700	14 - 11	97595-06550	13 - 8		
90387-10M42	23 - 6	91690-40035	17 - 46		27 - 9	95380-06600	7 - 28	97595-08565	18 - 48		
90387-13003	13 - 3	91690-40048	4 - 23	93210-08287	22 - 14		14 - 51	97607-04112	8 - 11		
90387-32002	3 - 16	92903-05600	7 - 46	93210-16275	23 - 10		25 - 39	97607-06125	8 - 12		
90387-33001	13 - 4	92903-06600	2 - 16	93210-22164	20 - 8	95380-08600	6 - 11	97802-04006	8 - 8		
90430-08020	20 - 30		4 - 7		27 - 17		17 - 25	97880-05012	8 - 19		
	27 - 13	92903-08600	11 - 17	93210-26130	20 - 9		18 - 46		10 - 27		
90445-09M75	6 - 5	92903-10600	13 - 16		27 - 6	95380-08700	12 - 6	97880-05025	10 - 7		
90445-10M41	2 - 35	92990-05100	6 - 24	93210-32738	6 - 10	95895-06035	20 - 32	97880-06010	8 - 22		
90445-11M05	22 - 11	92990-05600	8 - 20		26 - 16	97013-06014	6 - 13	97880-06016	19 - 8		
90445-11M06	22 - 9		10 - 8	93210-37160	18 - 12	97013-06016	2 - 15	97890-05006	5 - 22		
90465-06M88	4 - 24		14 - 40	93210-40659	4 - 14	97013-06025	4 - 6	97980-04110	5 - 6		
90465-13M11	9 - 19	92990-06100	9 - 12		26 - 12	97013-06035	4 - 8	97980-04112	5 - 14		
90465-18147	10 - 29		10 - 10	93210-45161	20 - 14	97013-06050	4 - 10	98503-04006	10 - 26		
90467-08004	6 - 6	92990-06300	20 - 33		27 - 8	97013-08012	11 - 18	98503-05028	6 - 23		
90480-10155	10 - 25	92990-08600	15 - 19	93210-46M16	3 - 8	97013-08030	7 - 10	98580-03015	25 - 37		
90480-14M14	1 - 9		16 - 11	93210-58M21	2 - 9		11 - 16	98580-04006	25 - 35		
90480-15M06	12 - 2		25 - 33		26 - 4	97075-06020	20 - 58	98580-04010	25 - 34		
90480-17165	10 - 17	92990-10200	18 - 28	93210-64ME7	20 - 54	97075-08025	18 - 41	98580-05010	25 - 36		
90480-17M08	10 - 1	92990-10600	15 - 3		27 - 14	97075-08030	19 - 4	98586-05016	22 - 4		
	12 - 21		16 - 24	93210-65M50	20 - 57	97075-10040	15 - 2	98980-04006	5 - 17		
90480-25161	9 - 26	92990-14200	21 - 14		27 - 16		16 - 23	99009-17500	10 - 32		
90480-29045	18 - 5	92995-06600	2 - 11	93306-00612	20 - 53	97090-06012	9 - 11	99080-05600	17 - 36		
90501-09M08	14 - 32		6 - 4	93306-305U3	3 - 9		10 - 9	99530-10014	7 - 25		
90501-10065	20 - 48		7 - 21	93310-62406	3 - 14	97095-06010	7 - 40				
90501-10071	15 - 24		9 - 4	93315-22004	20 - 55		9 - 3				
	16 - 18		13 - 10	93315-220V7	20 - 6	97095-06012	14 - 9				
90501-10227	7 - 38		14 - 3	93332-00005	20 - 40		15 - 6				
90501-10264	15 - 18		15 - 7	93332-000W5	20 - 3		16 - 7				
	16 - 12		16 - 5	93390-00009	3 - 17	97095-06016	7 - 20				
90501-14M07	14 - 31		18 - 19	93399-99951	3 - 6		15 - 9				
90501-23215	13 - 17		20 - 17	93430-06024	25 - 10		16 - 4				
90502-10M07	17 - 21		27 - 28	93440-62057	3 - 11	97095-06018	18 - 18				
90506-16M17	17 - 45	92995-08600	12 - 7	93602-20M02	3 - 21	97095-06020	6 - 3				
90506-30M27	17 - 41		17 - 24	93604-10M03	20 - 25		9 - 14				
90508-14M13	14 - 43		18 - 42	93606-11M24	21 - 3		13 - 9				
91490-12010	14 - 39		19 - 5	93606-12019	2 - 5		18 - 31				
91490-16010	7 - 47	92995-10600	21 - 5		18 - 17	97095-06022	2 - 10				
	14 - 26	93101-16001	2 - 8		19 - 3	97095-06025	20 - 22				
	17 - 40		26 - 3	93608-12063	18 - 8	97095-06035	7 - 23				

25B
25X/30H
PARTS CATALOGUE
©2003 by Yamaha Motor Co., Ltd.
1st edition, May 2003
All rights reserved.
Any reprinting or unauthorized use
without the written permission of
Yamaha Motor Co., Ltd.
is expressly prohibited.
Printed in Japan.