



#### Life raft SOLAS LALIZAS OCEANO

LALIZAS OCEANO life rafts are designed to be stored on board on every passenger vessel worldwide.

- 6, 8, 10, 12, 15, 20, 25, 30 & 35 person
- Pack A & Pack B
- Man throw over board liferafts



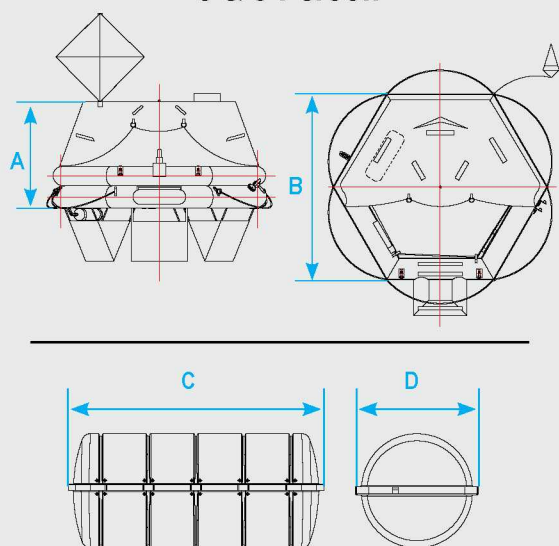
#### Canister

##### Items included:

- Cradle
- Operation line

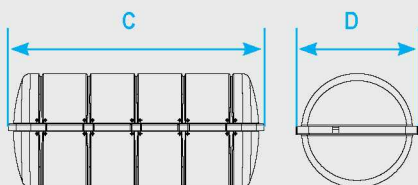
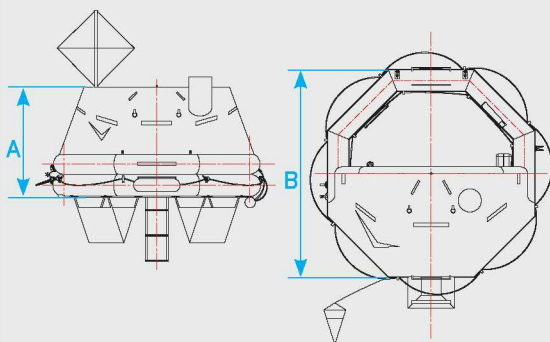
SOLAS/MED (Maritime Equipment Directive 96/98/EC as last amended). Certified as Items A.1/1.12 Inflatable Liferafts and tested per the applicable Standards, as stated within the frameworks of the MED Directive, i.e. SOLAS 74 as amended, i.e. Reg.III/4, Reg.III/13, Reg.III/21, Reg.III/26, Reg.III/31, Reg.III/34 and X/3, LSA Code I and IV, IMO Res. MSC.81(70), MSC.207(81), MSC.218(82), MSC.226(82), MSC.295(87), MSC/Circ.811, 1994 and 2000 HSC Code 8.

#### 6 & 8 Person

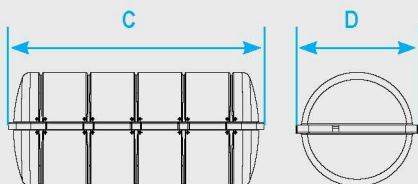
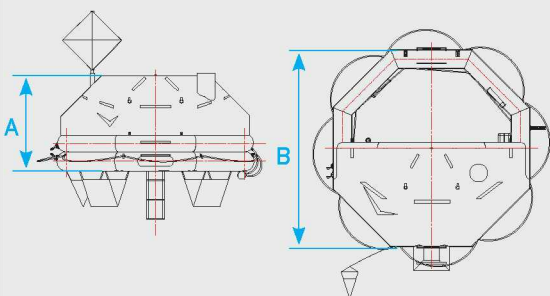


Code	Persons	Pack	Dimensions (mm)			
			A	B	C	D
79867	6	A	1200	2104	1090	615
79903		B			1045	545
79868	8	A	1250	2390	1090	615
79904		B			1045	545

## 10 & 12 Person



## 15 Person



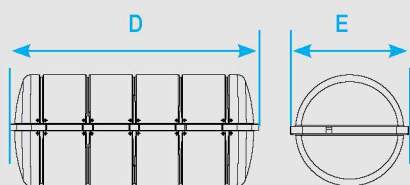
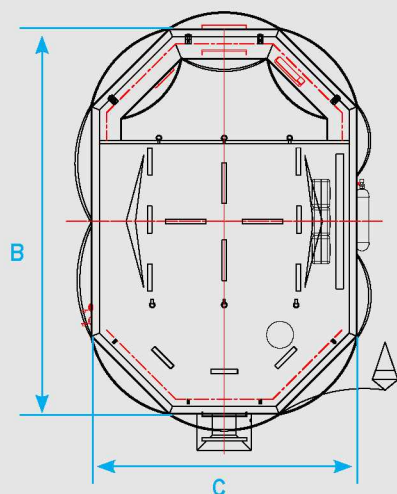
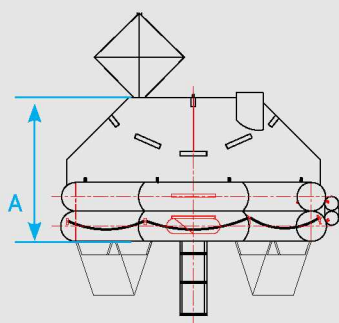
Code	Persons	Pack	Dimensions (mm)			
			A	B	C	D
79869	10	A	1400	2694	1230	630
79905		B			1090	615
79870	12	A	1500	2924	1230	630
79906		B			1090	615

**LALIZAS**  
**OCEANO**



Code	Persons	Pack	Dimensions (mm)			
			A	B	C	D
79871	15	A	1600	3238	1285	670
79907		B			1230	630

## 20, 25, 30 & 35 Person



**LALIZAS**  
**OCEANO**



Code	Persons	Pack	Dimensions (mm)				
			A	B	C	D	E
79873	20	A	1600	4304	2974	1335	696
79909		B				1285	670
79874	25	A	1650	4894	3194	1490	757
79910		B				1335	696
79875	30	A	1700	5384	3414	1700	765
79911		B				1490	757
79876	35	A	1750	5899	3568	1700	765
79912		B				1490	757



Code.....70290

### HAMMAR H20 Hydrostatic Release for Life Rafts (USCG&EC Approved SOLAS)

The Hammar H20 is a hydrostatic release unit designed to fit life rafts of all shapes and sizes (from 6 up to 150 persons). It is made of glass fibre reinforced nylon, which prevents it from corrosion. The Hammar H20 can be released at any angle and needs only the required water pressure to be activated (1,5 - 4,0m depth). It's safe, reliable and simple design has made it renowned and earned more worldwide approvals than any other unit.

- Simple to install and clearly marked with the expire date
- No spare parts or service required
- Must be replaced after two years



### Lashing with Hook (Big)

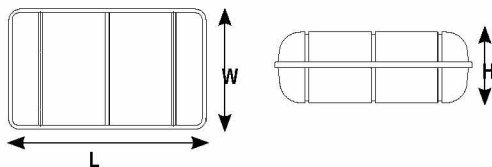
Code.....71892



## Life rafts & Accessories

### Life rafts ISO-RAFT CE ISO 9650-1

Lalizas ISO liferafts are available in 4 to 12 person versions, are fitted with a single floor as standard and are designed to be extremely safe. The ISO RAFT combines, compact size and structural integrity with proven liferaft design. The LALIZAS ISO RAFT is automatically inflated by a 12-meter painter line and its inflation system provides enough gas to inflate all the buoyancy chambers. The main body of the liferaft consists of two buoyant chambers inflated through a non return valve ensuring the flotation of the liferaft. Each chamber is capable of fully supporting the raft with its maximum number of occupants. The ISO RAFT is manufactured and tested according to ISO 9650-1 & ISO 9650-3 standards as last amended for Safety, and offers highly visible, stable, sheltered conditions for the occupants.



Code	78800	78810	78820	78830	78840
Persons	4	6	8	10	12
Container	Canister				
Total Weight (kg)	38	42	50	56	62
L (mm)	760	760	770	820	920
W (mm)	480	480	550	570	570
H (mm)	330	330	345	355	340

It can be packed either in a canister or in a waterproof valise. The LALIZAS ISO-RAFT Inflatable Liferaft Series is initially certified by Polish Register of Shipping-1463 and furthermore approved by the Maritime Authority of the Country of Destination in case it is needed.

### 12 YEARS GUARANTEE

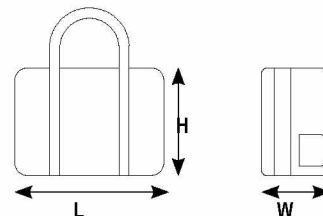
LALIZAS ISO-RAFTS carry our fully transferable 12 year fabric and seam guarantee. This is your assurance of our commitment to quality and complete customer satisfaction. This guarantee applies under certain conditions to all ISO life rafts, provided they are inspected by an authorized Lalizas service station. The first inspection of the liferaft should be 2 years after installation or 3 years within manufacturing date.



Canister



Valise



Code	78850	78860	78870	78880	78890
Persons	4	6	8	10	12
Container	Valise				
Total Weight (kg)	32	36	38	45	52
L (mm)	680	710	710	800	850
W (mm)	400	420	420	470	500
H (mm)	250	280	280	300	300

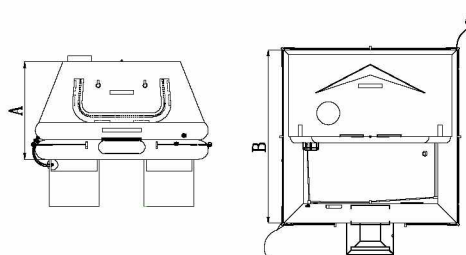
### Features & Specifications

1. Thermally insulated floor
2. International orange, self erecting canopy with retro-reflective tapes
3. Twin independent buoyancy tubes containing safety valves
4. Rain water collection gutter
5. Ventilation and observation port
6. Fully closeable entrance flap with zip tape. The 10 to 12 person versions also include an additional entrance.
7. External, internal lifelines and righting device suitable for handling even by one person
8. Comprehensive international service centers
9. Operating temperature -15° C to +65° C
10. Stowage max height: 6m above sea level

### Standard Equipment

1. Portable buoyant bailer (1pc)
2. Sponge (2pcs)
3. Pair of buoyant paddles (1pc)
4. Whistle (1pc)
5. Waterproof torch /separate battery /bulb (1pc)
6. Signalling mirror (1pc)
7. Anti-seasickness pills/per person (6pcs)
8. Seasickness bag/per person (1pc)
9. Red hand flare (in accordance with SOLAS LSA Code Chapter III, 3.2) (3pcs)
10. Red parachute flares (in accordance with SOLAS LSA Code Chapter III, 3.1) (2pcs)
11. Repair kit (1pc)
12. Bellow (1pc)
13. Operational Manual (1pc)
14. Table of the life-saving signals (1pc)
15. Log Book + Immediate actions Card (1pc)
16. Mooring Ring with 30m rope (1pc)
17. Safety knife connected to the liferaft, buoyant, fixed blade, rounded tips (1pc)
18. Floating anchor with 30m rope (1pc)

Μοντέλο	Διαστάσεις (mm)	
	A	B
ISO-RAFT 4	1170	1634
ISO-RAFT 6	1200	1956
ISO-RAFT 8	1250	2224
ISO-RAFT 10	1300	2458
ISO-RAFT 12	1350	2667



## Internal & External Liferaft Lights

The set of internal and external liferaft lights consists of a flashing external light and a steady internal light. The external light provides luminous intensity greater than 4.3cd for at least 12 hours, while the internal light provides luminous intensity not less than 0.5cd for someone to read for at least 12 hours. These liferaft lights can be activated either automatically, when the liferaft is deployed or manually by using the product's ON/OFF button. The set features a PCB circuit with epoxy resin, PVC insulated cables and a waterproof male-female, two-pin plug connector. The product should be kept in a dark, clean and dry area and stored without being compressed.



Code....50002

**BEST VALUE**



0098



Code.....20693

## Mooring Ring with 30m rope

Designed for the retrieval of MOB, the ring is moulded in PVC, weighing only 250gr and it is tied to a 30m floating rope.



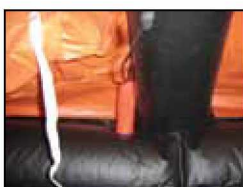
0098

**BEST VALUE**

## Lithium Battery for Liferaft Lights, (3V x 2pcs), 6V

- Consists of 2 Lithium batteries
- Battery type: AAA:D
- 5 years battery expiration from the date of production
- PVC Insulated cables
- Waterproof since it is sealed with epoxy resin
- Pull off activatory plastic pin

Code....50003



**BEST VALUE**

## Liferaft LED flashlight

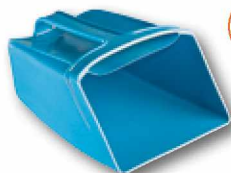
Code....71217

AA Alkaline 1.5V x 2pcs  
(batteries not included)

## Floating, flexible bailer

length 190mm x width 135mm

Code....16207



**NEW**



**NEW**

## Liferaft support base,

Code....44838



## Overpressure valve for life rafts

Code....56390

**BEST VALUE**



## Stainless Steel Fixing Liferaft Support

Code....56040



## Stainless steel liferaft support base, 750x520x200mm

Code....70620



## Valve for Flexible Water Tanks (31321-6, 31329)

Code..... 02022

## First aid Kit - non SOLAS



Code....56880

- Anti-Angina Preparations
- Anti-Emetics
- Analgesics - Antipyretics
- Analgesics - Anti-Inflammatory Preparation
- Antiseptic Hydro Peroxide
- Burn Preparation
- Cannula for mouth to mouth Resuscitation
- Adhesive elastic bandage
- Sterile Gauze Compresses
- Cotton
- Adhesive Dressings
- Sterile Pressure Bandages
- Adhesive Sutures
- Adhesive Tape
- Sterile Gauze with water & vegetable oils for burns
- Scissors

## First Aid Kit SOLAS 74, For Life Boats - Life Rafts

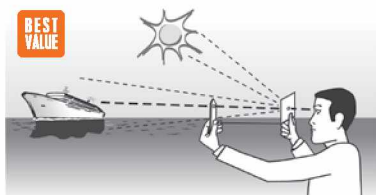
Certified by the Ministry of Merchant Marine/Merchant Ships Directorate according to (a) the International Convention on the Safety of Life at Sea 1974 (SOLAS 74) and the 1983 amendments, (b) the Royal Decree 36/1967 and (c) the Presidential Decree 277/1997.

### Contents

Anti-Angina Preparations, Anti-Hemorrhagics Including Uterotonics, Anti-Acid Mucous Dressings, Anti-Emetics, Anti-Diarhoeals, Analgesic-Antipyretics, Analgesic-Anti-Inflammatory Preparation, Antiseptic Mercurochrom, Antiseptic Eau Oxygenee, Burn Preparation, Cannula for Mouth to Mouth Resuscitation, Adhesive Elastic Bandage, Sterile Gauze Compresses, Cotton Wool, Disposable Polyethylene Gloves, Adhesive Dressings, Sterile Compression Bandages, Adhesive Sutures, Sterile Gauze with Fatty Water and Vegetable Oils for Burns, Adhesive Tape, Scissors, Thermometer, Disposable Syringes 2.5ml - 5ml

Code.....71245





Signalling Mirror 7x7cm



Code.....56570

**Instructions of use**

1. Hold foresight in left hand with arm fully extended
2. Hold the signalling mirror in right hand toward the sunlight, facing the back of the mirror
3. Align the holes of the foresight and the mirror on the target
4. Move mirror until the reflection of the sun from the mirror can be seen on the foresight and a shadow point appears in its hole
5. The ray is now directed at the target



Code.....70975

**Thermal Blanket, Advanced, 2,1 x 1,6m**

**APPLICATION:** The thermal blanket helps you keep the body's temperature by protecting you from the sun rays and the very low temperatures. It is suitable to use in cases of accident, but also for protection against wind, rain or heat.

**INSTRUCTIONS:** When you need to avoid hypothermia, use the thermal blanket with the golden side facing upwards. In case you need protection from the heat, use the thermal blanket with the silver side facing upwards.



Code.....70976

**Thermal Blanket, 2,1 x 1,6m**

- First Aid Application
- In case of severe cold or shock wrap the blanket around the body
- Keeps the body's temperature under very low or very high temperatures
- Prevents post - accident shock
- Waterproof
- Its reflective surface provides high visibility
- Dimensions: 2,1 x 1,16m

## Life Saving Apparatus

**ADVISOR**

**The Regulations:** Before using life saving apparatus, you should always be aware of the marine safety regulations applicable to your country or those of the country you are visiting. In Greece, life saving apparatus is obligatory safety equipment.

**Use:** Buoyant safety equipment is used on a boat as a means of rescuing persons in the water. They can be used instead of a Liferaft, (depending on the country) should the crew need to abandon the vessel or in case of a man over board situation.

**Instructions of Use:** The buoyancy apparatus should be thrown into the water towards the casualty requiring the most help. They should hold on to the special handles fixed to the ropes on the apparatus. Under no circumstances should the apparatus be loaded above the stated capacity, as its effectiveness will be impaired.

**Storage / Maintenance**

**Storage:** A hard buoyancy apparatus should be placed in an easily accessible location on the boat and should be clear of obstacles at all times. The "Cushion Type" buoyancy apparatus may also be used for seating.

**Maintenance:** Do not allow the buoyancy apparatus to come into contact with high temperatures, fire or sharp objects. Rinse with clean water after use.

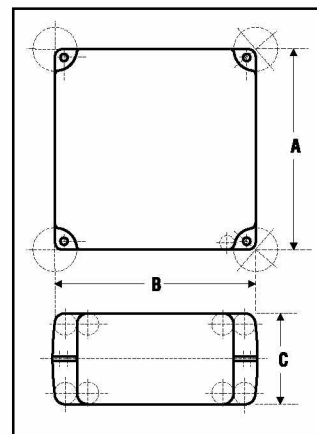
**Replacement:** In case the apparatus or part of it is broken or torn because of bad storage or maintenance, the product should be immediately replaced.

A buoyancy apparatus, as simple as it may be, can be proved very valuable at time of an emergency.

**Life Saving Apparatus (Plastic)**

- For use on sail or motor boats
- Outer cover made of high strength polyethylene with an inner polystyrene filling
- Complete with all-round rope lifeline
- Available in 4, 8 and 12 person models
- High visibility orange
- Approved to EEP. Approval number: 4232/46/00

Code	70131	70133	70135
Persons	4	8	12
Volume (lt)	80	151	252
Weight (kg)	5	11	18
A (cm)	55	76	100
B (cm)	55	76	100
C (cm)	25	25	25



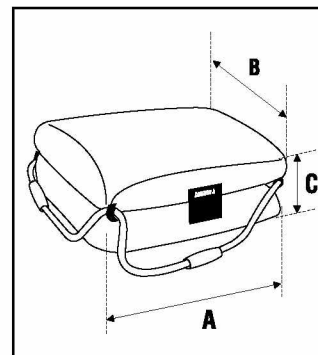




#### Life Saving Apparatus - "Cushion Type"

- For use on sail or motor boats
- Made of a durable nylon outer shell and inner layers of polyethylene
- Complete with all round rope Lifeline
- Lightweight and doubles as a cushion
- Available in 3, 4 and 6 person models
- High visibility orange
- Approved to EEP. Approval number: 4232/24/01

Code	70270	70271	70272
Persons	3	4	6
A (cm)	40	52	46
B (cm)	50	47	70
C (cm)	29	25	36



Spare parts for EPIRB



Code.....71687



**Hammar nut HE-0045 for H20**  
**Hydrostatic Release for EPIRB**  
Code.....71752



**Hammar bolt HE-0021 for H20**  
**Hydrostatic Release for EPIRB**  
Code.....71751

#### HAMMAR H20 Hydrostatic Release for EPIRB (MCA&USCG Approved SOLAS)

The Hammar H20 is a hydrostatic release unit used for Emergency Position Indicating Radio Beacons (EPIRB). Should the vessel sink, the Hammar H20, which is activated by increasing water pressure, will automatically release the EPIRB. Instead of rope sling, a specially developed plastic bolt secures the radio beacon and will be cut when the unit is activated. It is made of glass fibre reinforced nylon, which prevents it from corrosion.

- No annual service, maintenance or spare parts.
- Must be replaced after two years

Retroreflective Tape



**Reflective Tape "KIT 16"**  
16 reflective stripes.  
Code.....44095



**Reflective Tape "KIT 4"**  
4 reflective stripes for life ring.  
Code.....44096

BEST  
VALUE



#### Retro reflective Tape (ROLL) - SOLAS - 40m

Retroreflective tape to SOLAS (L.S.A Code) by Lalizas 3150A. Length 40m. Tested according to IMO Res. A. 658(16)

Code.....70180



#### Retroreflective Tape - SOLAS - Set of 6 pieces - 5x10cm

Retroreflective tape retail pack to SOLAS (L.S.A Code) by Lalizas. Six 10cmx5cm self adhesive strips per pack. May be sewn.

Code.....70190

## Sea Anchors - Drogues

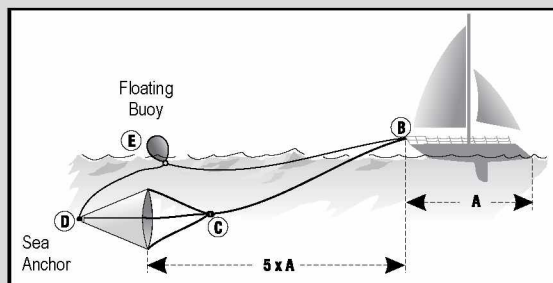
### ADVISOR

**Use:** A Sea anchor, also called a drogue, is an essential part of your boat's safety equipment. They are used to slow down your boat or liferaft when you are facing strong winds or heavy seas. Moreover they will ensure your boat turns so as to face into or away from the waves. A sea anchor can also be used to keep your boat as stationary as possible and not be affected by the wind, very useful when you are fishing or swimming in waters too deep to anchor.

**Instructions of use :** Made of strong-coated PVC, the drogue is open at both ends and includes lines that create two loops at the front and one loop at the end. The sea anchor (drogue) is tied to the boat's bow (B) with the use of a rope, which should be of at least five (5) times the boat's length (A). Tied to the bow of the boat, the rope is passed through the two loops of the drogue's front lines, creating a tight knot (C). The larger the size of your drogue (larger opening), the bigger its effectiveness will be.

In order to pull the drogue out of the water you should tie a second rope at the end loop of the drogue (D) - pulling this rope will allow the drogue to be pulled out of from the water.

To warn and prevent other boats from running over the ropes of your drogue, you may use a floating buoy (E) that may be tied to the secondary rope. Drogues should never be used for permanent anchorage.

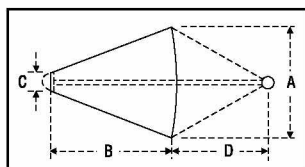


### Professional Sea Anchors - Drogues

Lalizas has designed the Professional Sea Anchor (Drogue) especially for use on large boats and under harsh conditions. The fabric is 200D polyester coated on both sides with 0,45mm PVC. Lalizas Professional Sea Anchors are immensely strong using 40mm, UV resistant, webbing terminating on a 6mm x 60mm Inox connecting ring. Lalizas drogues are supplied in a safety yellow colour, packaged in a handy, tough stowage bag.



Boats Length	Code	A(cm)	B(cm)	C(cm)	D(cm)
15m (49ft)	10240	200	165	20	160
18m (59ft)	10241	250	210	25	200
21m (69ft)	10242	300	250	30	240



**ATTENTION:** This is a very general guide and there may be variations based on the weight, keel of the boat, even on the intended use of the sea anchor etc. Your choice should not be based only on the guide.

### Sea Anchor (Drogue)

Made of strong coated PVC with continuous webbing inside, for added strength. Suitable for boats between 4,5-12m.

Boats Length	Code	A(cm)	B(cm)	C(cm)	D(cm)
4,5m (15ft)	10071	50	55	8	64
6m (20ft)	10072	65	75	10	70
7,5m (25ft)	10073	125	125	17	125
9m (30ft)	10074	135	142	20	125
12m (40ft)	10075	190	145	20	130

